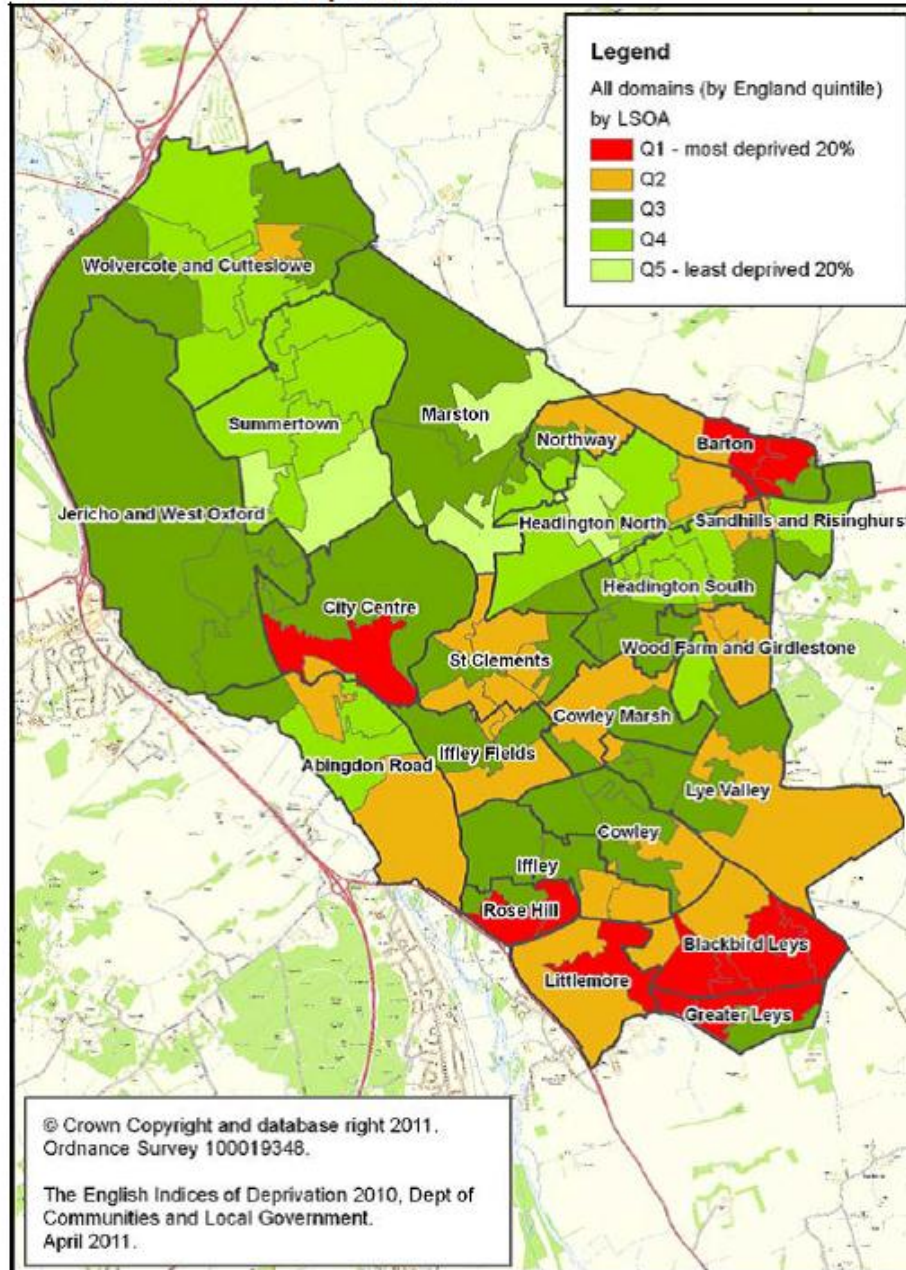


# Breaking the Cycle of Deprivation

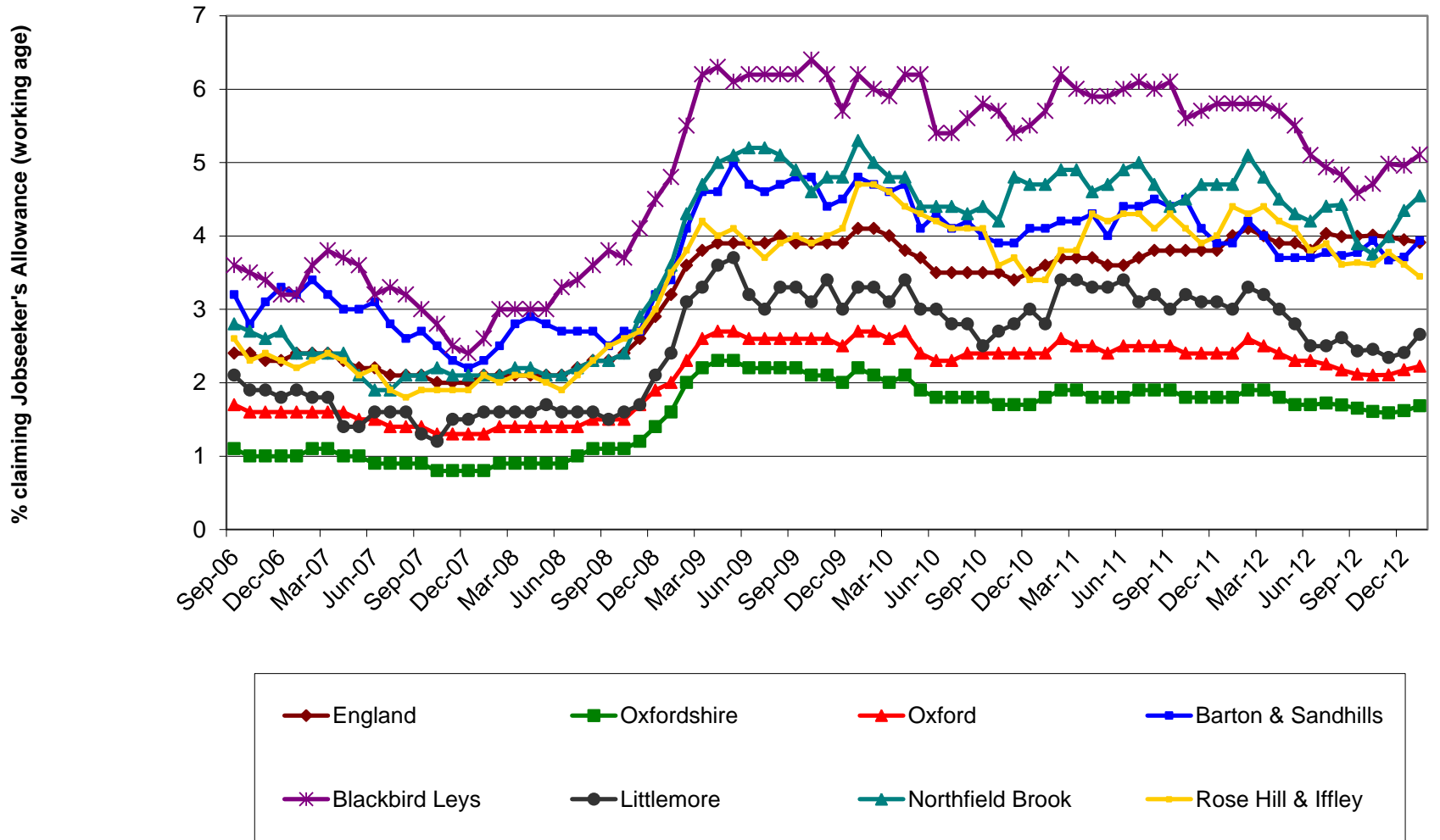
Report to Oxford Strategic  
Partnership  
November 2013

## 1. Overall Index of Deprivation



Why are  
we  
doing  
this?

**% claiming Jobseekers Allowance in Regeneration wards  
(to January 2013)**



# Work of the Theme Leads

Health Inequalities	Clinical Commissioning Group, City Locality
Employment and Skills	Job Centre Plus
Children, Young People and Families	Oxfordshire County Council
Community Consultation and Engagement	Oxford City Council

# How we work together

- Participation and Engagement of local communities
- Local Neighbourhood Partnerships - sub groups on health, young people.
- Action plans for each theme with local focus.
- Cross cutting work
- Steering group includes leads of other initiatives e.g. Thriving Families

# Some of the funded projects

- Places
  - Barton - Learning Partnership; Let's Cook
  - Blackbird Leys - Day Nursery provision; Leys Market; smoking pledge
- Young People
  - Not in Education, Employment or Training
- Other specific groups
  - Mind courses;
  - Aspire;
  - exercise classes

# Key findings

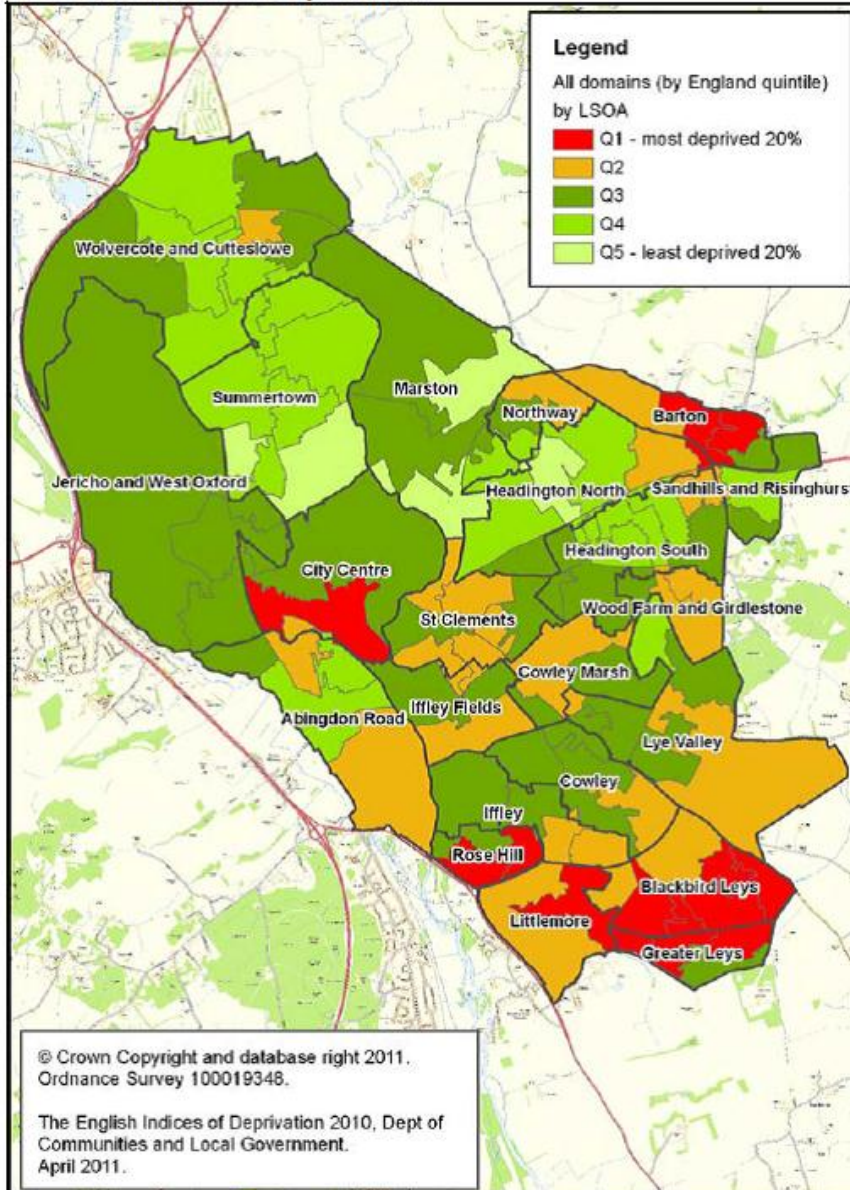
- Work has grown and become embedded.
- Local focus through Neighbourhood partnerships in 6 areas.
- Participation and engagement is a feature.
- Money was used for a diverse range of projects.
- There is still work to do!

# What next?

- Stronger Communities linking work together
  - Breaking the Cycle of Deprivation
  - Thriving Families,
  - Improving school attainment,
  - Youth Ambition.
- Build and maintain initiatives
  - e.g. Job Clubs,
  - increasing participation of young people,
  - Preventing ill health e.g. promote Health Checks



## 1. Overall Index of Deprivation



# Why we need to keep on doing this work....

Income

Health & Disability

Education, Skills & Training

Employment

Crime

Barriers to Housing & Services

Living Environment

# Any questions?

[Jackie.wilderspin@oxfordshire.gov.uk](mailto:Jackie.wilderspin@oxfordshire.gov.uk)

[vjohnson@oxford.gov.uk](mailto:vjohnson@oxford.gov.uk)