

Appendix 1 – Statutory Consultees

Appendix 2 – Additional Local Groups and Organisations Contacted Directly

Appendix 3 – Leaflet Sample?

#### Appendix 1: Statutory Consultees and Duty to Cooperate Bodies

Blackbird Leys Parish Council	Canal & River Trust
Cherwell District Council	EE
Environment Agency	Highways England
Historic England	Homes England
Homes England (SW Consultations)	National Grid UK
Natural England	Network Rail
NHS England	NHS Buckinghamshire, Oxfordshire and Berkshire West Integrated Care Board
Office of Rail and Road	OxLEP Oxfordshire Local Enterprise Partnership
Oxfordshire County Council (Strategic Planning Team)	Thames Valley Police
Thames Water	The Office of the Police and Crime Commissioner for Thames Valley
Active Travel England	Vale of White Horse District Council
South Oxfordshire District Council	West Oxfordshire District Council
Littlemore Parish Council	Risinghurst and Sandhills Parish Council
Old Marston Parish Council	Avison Young (on behalf of National Gas Transmission)
The Coal Authority	Three
Vodafone and 02	The Theatres Trust

#### Appendix 2: Additional Local Groups and Organisations contacted directly

St Ebbes New Development Residents Association	Advisory Council For the Education of Romany and Other Travellers
Age UK Oxfordshire	Apsley Road Residents Association
Apsley Road Residents Association	Barns Court Allotment Association
Barns Court Allotment Association	Barracks Lane Allotment Association
Bartholomew Road Allotments Association	Bartlemas Close Allotment Association
Barton Community Association	Barton Fields Allotment Association

Binsey Village Residents Association	Blackbird Leys Community Association
BOAT Boaters of Oxford Action Team	Build a Dream Self Build Association
Bullington Community Association	Co-ordinating Committee of Headington Residents' Associations (CCOHRA)
Cordrey Green Residents Association	CPRE Oxfordshire
Cripley Meadow Allotment Association	Cunliffe Close Residents Association
Cuttleslowe Allotment Association	Cuttleslowe Community Association
Deaf Direct Oxford	Design Council Cabe
Divinity Road Area Residents Association (DRARA) Planning Action Group	Donnington Residents Association
East Oxford Community Association	East Oxford Residents Association Forum
East Ward Allotment Association	Essex Street Residents Association
Fairacres Road Allotment Association	Fairview Allotment Association
Falcon Close Resident's Association	Feilden Grove Residents Association
Florence Park Community Association	FOXCAN (Friends of Oxford Canal)
Friends of Aristotle Recreation Ground	Friends of Aston's Eyot
Friends of Bury Knowle Park	Friends of Cutteslowe and Sunnymead Park
Friends of Florence Park	Friends of Headington Hill Park
Friends of Holy Trinity Church	Friends of Iffley Fields
Friends Of Iffley Village	Friends of Lye Valley
Friends Of Quarry	Friends of Oxpens Meadow
Friends of Raleigh Park	Friends of South Park
Friends of the Trap Grounds	Friends Of Warneford Meadow
Friends, Families & Travellers Community Base	Gurdwara Sri Guru Singh Sabha Oxford
Harefields and Marriott Residents Association	Harefields Residents Association
Headington Action	Headington And St Clements Residents' Associations
Headington Community Association	Headington Heritage
Headington Neighbourhood Forum	Highfield Residents' Association
Hill Top Road Residents' Association	Hobson Road Group
Hurst Street Residents Association	Iffley Fields Community Nature Plan Group
Iffley Fields Residents Association	Iffley Road Area Residents Association
Iffley History Society	Ingle Close Allotments
Jack Straw's Lane Residents Association	Jericho Community Association
Jericho Wharf Trust	Jeune Street Residents Association
Kestrel Crescent Allotment Association	Littlemore Community Association
Littlemore Local Historical Society	London Place Residents Association
Lower Wolvercote Allotment Association	Marston Ferry and Blackhall Allotment Association
Marston Ferry and Blackhall Allotment Association	Marston Street Residents Association
Middle Cowley Action Group	Mileway Gardens Residents Association
Mill Lane Allotment Association	Moreton Road Residents' Association

Morrell Avenue Area Residents' Association (MAARA)	Morrell Avenue Area Residents' Association (MAARA)
New Headington Residents Association	New Marston South Residents Association
Norham Manor Residents Association	North Oxford Association
North Parade Residents Association	Northway Action Group
Northway Community Association	Northway Tenants and Residents Association
Old Marston Residents Association	Osney Island Residents Association
Osney, St Thomas & New Botley Allotment Association	Oxford and District Federation of Allotment Associations
Oxford and District Federation of Allotment Associations	Oxford Archaeology South
Oxford Asian Cultural Association	Oxford Civic Society
Oxford Cohousing	Oxford Community Land Trust
Oxford Green Belt Network	Oxford Hindu Temple & Community Centre Project
Oxford Historical Society	Oxford Irish Society
Oxford Muslim Community Initiative	Oxford Pegasus Residents Association
Oxford Preservation Trust	Oxford Quakers
Oxford Waterside Residents Association	Oxfordshire Architectural and Historical Society
Oxfordshire Association for the Blind	Oxfordshire Buildings Record
Oxfordshire City and County Archaeological Forum	Oxfordshire Gardens Trust
Oxfordshire Youth Support Services	Park Town Trust
Polstead Road Residents' Association	Ramsey Road Allotment Association
Regal Area Community Association	Residential Boat Owners' Association
Risinghurst Allotment Association	Rose Hill (Lenthall Road) Allotment Association
Rose Hill Community Association	Save Port Meadow
Showman's Guild of Great Britain (London and Home Counties)	Sorrel Road Allotment Association
South Jericho RA	South Oxford Community Association
South Ward Allotment Association	Spragglesea Mead and Deans Ham Allotment Association
St Aldate's Parish Church and Centre	St Clement's Allotment Association
St John Street Area Residents' Association	St John Street Area Residents' Association
St Margaret's Church	St Margaret's Area Society
St Mary's Road Residents Association	Summertown Riverside Group
Summertown St Margaret's Neighbourhood Forum	Templars Square Residents Association
Thames Valley Gypsy and Traveller Association	The Ancient Monuments Society
The Georgian Group	The Gypsy Council

The Oxford Buddha Vihara	The Society for the Protection of Ancient Buildings
The Travellers Movement	The Twentieth Century Society
Thrangu House Oxford	Town Furze Allotment Association
Trap Grounds Allotment Association	Upper Wolvercote Allotment Association
Van Diemens Lane Allotment Association	Victoria Road Group
Waterways Residents Association	West Oxford Community Association
Wingfield Residents	Wolvercote Commoners Committee
Wolvercote Local History Society	Wolvercote Neighbourhood Forum
York Place Residents' Association	

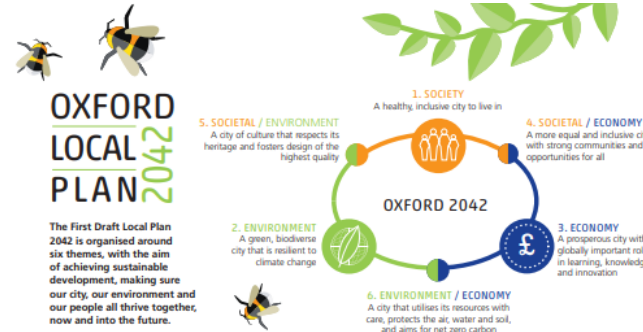
## Appendix 3: Leaflet Sample

### OXFORD LOCAL PLAN 2042

## PLANNING OXFORD'S FUTURE FIRST DRAFT LOCAL PLAN 2042

We would like to hear your views on the First Draft Oxford Local Plan 2042.

The new Local Plan will aim to address the key issues facing all of Oxford's residents and businesses. Based on the existing use of the land in the city, it will outline where and how new housing developments can take place in the future, whilst also ensuring the city's economic growth is managed and made more inclusive for everyone, and preserving the qualities that make Oxford unique.



### TAKING CARE OF OUR ENVIRONMENT

We think it is important that Oxford is a green biodiverse city that is resilient to and minimises our impact on climate change. Requiring low carbon and environmentally friendly buildings is something we should do. The quality of our built environment is also key to supporting a high standard of living, so we should promote good design across the whole of the city that respects heritage assets and their surroundings.

### THE CONSULTATION RUNS UNTIL 8TH AUGUST

The Plan will be informed by evidence we collect, by Government policy and by consultation. An early involvement survey has given an insight about what is most important to residents and businesses. We have drafted a set of policies to guide future development of Oxford.

In this leaflet we have picked out key parts of the draft. Your responses will help inform the draft Local Plan that we aim to consult on by the end of this year, before we then submit it to the Government to be examined.

**THE FULL DRAFT CAN BE VIEWED HERE**

[www.oxford.gov.uk/localplan2042](https://www.oxford.gov.uk/localplan2042)

**TO RESPOND TO THE IN-DEPTH CONSULTATION:**

<https://consultation.oxford.gov.uk/planning-services/oxford-local-plan-2042-reg18>

**TO RESPOND TO THE SHORT CONSULTATION:**

<https://consultation.oxford.gov.uk/planning-services/local-plan-2042-reg18-short>

**OR BY RETURNING THIS LEAFLET**

### WHAT IS OUR HOUSING NEED AND WHAT CAN WE DO TO TRY AND MEET IT?

There is a great need for new, affordable homes in Oxford. Our housing need is 1,087 dwellings per year. Oxford is one of the least affordable cities to live in the UK.

- 1** We have used up-to-date evidence of costs and profits in new developments to set an affordable housing requirement- we are proposing that 40% of new developments with more than 10 homes should be affordable, and 80% of those affordable homes should be social rented housing as this is the most affordable type to best meet needs. To what extent do you agree with this approach?
- ☐ AGREE ☐ STRONGLY AGREE ☐ NEUTRAL ☐ DISAGREE ☐ STRONGLY DISAGREE ☐ DO NOT KNOW

### ALLOCATING SITES FOR DEVELOPMENT

We don't have space to meet our full need in the city, certainly not without compromising other needs like open space. But we must still try to deliver as much housing need as possible. Our policies prioritise housing and we have worked hard to identify sites - contacting landowners, running a call for sites and carrying out desk-based exercises. We are also looking at the Green Belt.

We have identified sites that we are investigating to allocate for development. Nearly all of these are on previously developed land. We will continue to talk to landowners and assess impacts for example in terms of access, heritage and green infrastructure. We would welcome comments on key things to consider as we go on to draft the detailed site allocation policies. Maps of the sites can be found online by scanning the QR code.



### GREEN BELT

Having unmet housing need means that the Government tells us we have to see if areas of the Green Belt could be developed for housing. At this stage, we have ruled out much of the Green Belt as not being suitable for development, for example because it is functional flood plain or because of its wildlife value. The rest of the Green Belt we have assessed against the purposes of Green Belt, and we now need to investigate landowner interest, biodiversity interest, whether there is access and whether there are any other constraints. Maps that show the area of Green Belt, the areas ruled out and the areas in scope for further investigation are available by scanning this QR code.



Maps showing the sites we're investigating are available on our website. If wish to see them but can't view these please contact us using the details below.

### SUPPORTING OXFORD'S SUCCESSFUL ECONOMY AND REDUCING INEQUALITIES

Oxford is a prosperous city, with a globally important role in education, research and health, and education. However, there are inequalities across the city. Reducing these means there needs to be access to employment opportunities for all, as well as access to decent, affordable homes.



- 5** We have identified what we think are key employment sites in the city that we should protect. These are sites that support Oxford's internationally important role in education, research and health, and also those that support a diverse and strong economy. We are not protecting any employment sites in the city centre or district centres, to give full flexibility in those areas, for example to allow for offices to change use to housing. To what extent do you agree with this approach?
- ☐ AGREE ☐ STRONGLY AGREE ☐ NEUTRAL ☐ DISAGREE ☐ STRONGLY DISAGREE ☐ DO NOT KNOW
- 6** We propose requiring community employment plans so that work and training opportunities are given to local people. To what extent do you agree with this approach?
- ☐ AGREE ☐ STRONGLY AGREE ☐ NEUTRAL ☐ DISAGREE ☐ STRONGLY DISAGREE ☐ DO NOT KNOW
- 7** Affordable workspace is proposed as a new policy approach- the largest key employment sites will be expected to deliver an affordable workspace strategy, to ensure a range of employment types and businesses. To what extent do you agree with this approach?
- ☐ AGREE ☐ STRONGLY AGREE ☐ NEUTRAL ☐ DISAGREE ☐ STRONGLY DISAGREE ☐ DO NOT KNOW



WE WOULD LIKE YOUR VIEWS ABOUT THE OPTIONS WE'RE CONSIDERING FOR THE LOCAL PLAN 2042...

OXFORD  
LOCAL  
PLAN 2042



This is the second stage of consultation, with one more key consultation stage to follow later in the year:



ANY FURTHER COMMENTS?



Scan the QR code to sign up to receive our weekly e-newsletter to stay up-to-date with the latest consultations, news and events from Oxford City Council.



#### YOUR DETAILS

We will accept anonymous responses, but please let us know your name and contact details. This will mean we can contact you when we next consult on the Local Plan 2042. Your comments will be considered by the Planning Policy team at Oxford City Council.

Your Name:

Organisation (if applicable):

Address:

Email:

Gender: ☐ Female ☐ Male ☐ Prefer not to say

Prefer to self-describe:

Age Group: ☐ Under 16 ☐ 16-19 ☐ 20-24 ☐ 25-34

☐ 35-44 ☐ 45-54 ☐ 55-59 ☐ 60-64 ☐ 65-74

☐ 75+ ☐ prefer not to say

Date:

Do you agree to us using your data to analyse responses?

☐ YES ☐ NO

Do you agree to us using your data to contact you about future engagement events relating to the Local Plan 2042? ☐ YES ☐ NO

**DATA PROTECTION** Your personal details will be properly safeguarded and processed in accordance with the requirements of the General Data Protection Regulation (GDPR) 2018. Your information will be used for Oxford Local Plan 2042 consultations only, and we will only store your data until the Plan is adopted.

PLEASE POST BACK TO US IN AN ENVELOPE MARKED  
'FREEPOST Oxford City Council' (no stamp required)

FREEPOST Oxford City Council

OXFORD  
LOCAL  
PLAN 2042