

Medium-sized businesses most likely to be growing

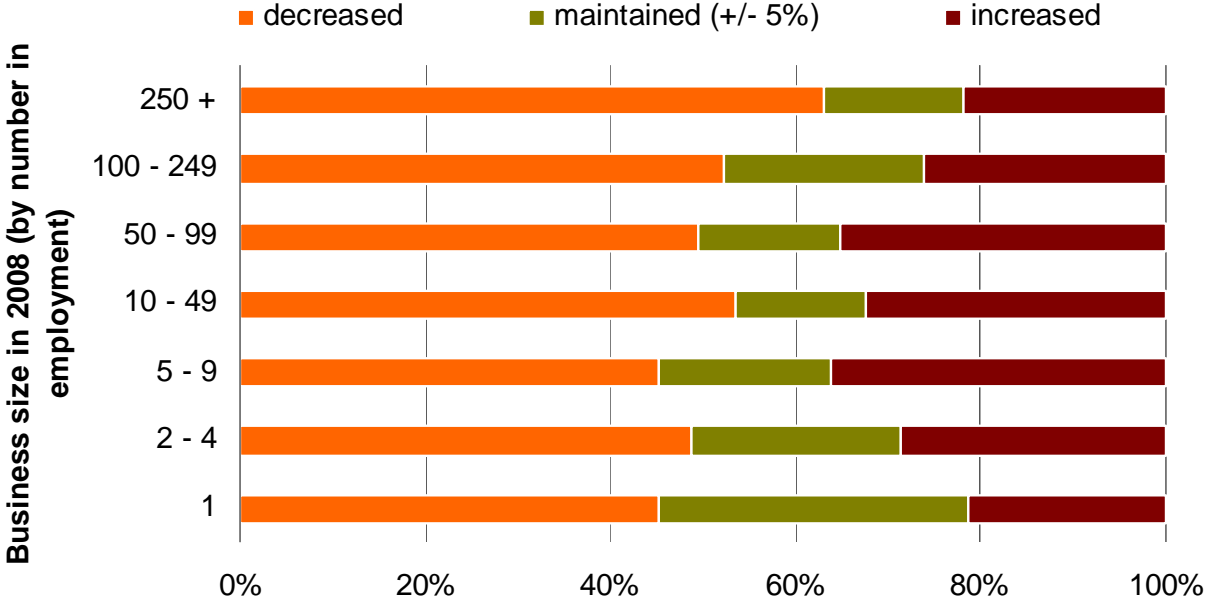
Total employment in Oxford has remained relatively stable over the period 2008-11, though there has been an increase of around 1,000 in the number of residents claiming unemployment benefit. Underneath this relatively stable overall picture, there has been a lot of change within individual businesses.

The chart below investigates what happened to employment in organisations of various sizes in Oxford between 2008 and 2011. It shows the proportion of businesses in each 2008 size category which had decreased, maintained or increased employment levels by 2011. Across all size categories, businesses are more likely to have decreased than increased employment levels. Large employers were the most likely to have decreased employment – perhaps unsurprisingly, as many are public sector organisations which have been subject to budget reductions. Meanwhile, medium-sized businesses of between 5 and 99 people are the most likely to have increased employment. In addition, in 2011 there were 1,100 new businesses, with 8,200 people in employment, which did not exist in Oxford in 2008.

www.oxford.gov.uk



Businesses by size in 2008, showing the proportions which had decreased, maintained or increased employment levels by 2011



For more information contact:
 Mark Fransham
 Social Research Officer
 01865 252797

mfransham@oxford.gov.uk
 www.oxford.gov.uk/oxfordstats
 www.oxfordshireobservatory.info
 Published May 2012

Data source:
 Inter-Departmental Business Register,
 Office for National Statistics

