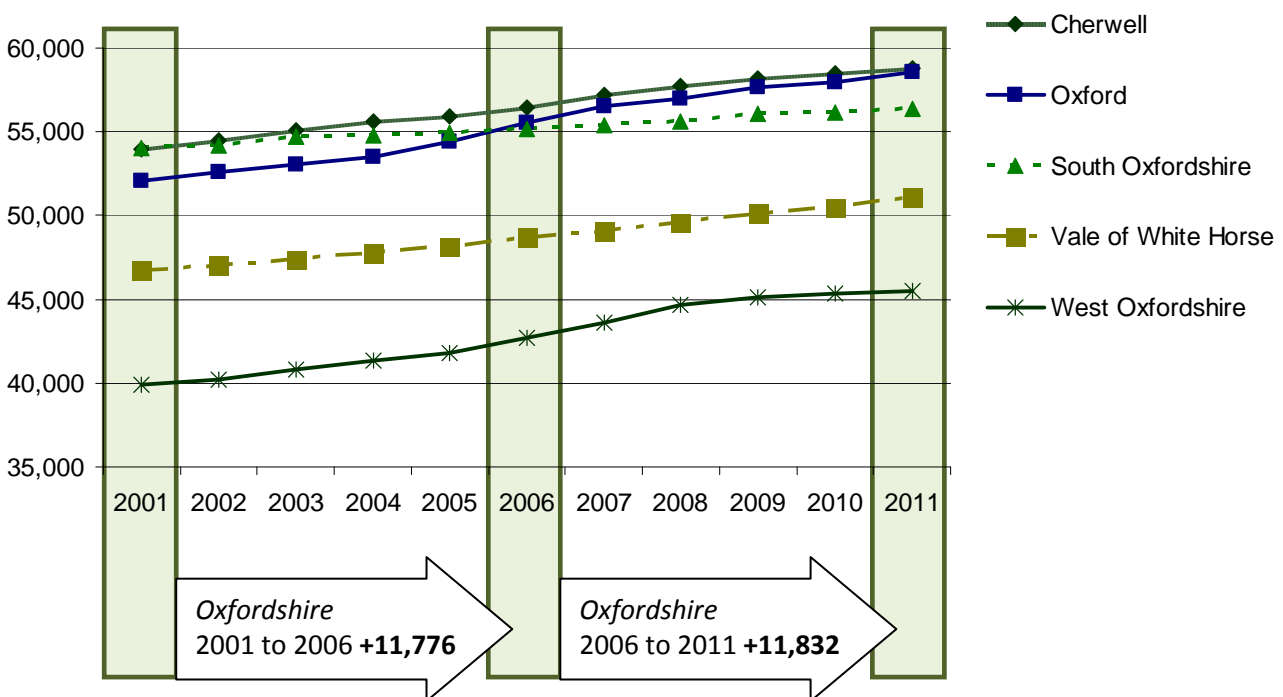


## The past 10 years has seen a steady growth in residential dwellings in Oxfordshire

Over the past 10 years there has been a steady increase in the number of residential dwellings in all districts in Oxfordshire with the highest growth in West Oxfordshire followed by Oxford city.

### Growth in total residential dwellings, 2001 to 2011



Source: Dwelling stock by Council Tax band, ONS from Neighbourhood Statistics, original source: Valuation Office Agency (VOA)

Further analysis of the growth in dwellings by Council Tax bands for each district shows that between 2001 and 2011:

- **Cherwell** district saw an increase of 4,327 residential dwellings (+9%) with the highest percentage growth in Band A properties (typically purpose built flats).
- **Oxford city** saw an increase of 6,440 residential dwellings (+12%) with the highest percentage growth in Band B properties.
- **South Oxfordshire** district saw an increase of 2,387 residential dwellings (+4%) with the highest percentage growth in Band H properties.
- **Vale of White Horse** district saw an increase of 4,327 residential dwellings (+9%) with the highest percentage growth in Band B properties.
- **West Oxfordshire** district saw an increase of 5,622 residential dwellings (+14%) with the highest percentage growth in Band B properties.

(see following charts)

**Residential dwellings (all sizes) 2001 to 2011**

|                          | 2001           | 2002           | 2003           | 2004           | 2005           | 2006           | 2007           | 2008           | 2009           | 2010           | 2011           |
|--------------------------|----------------|----------------|----------------|----------------|----------------|----------------|----------------|----------------|----------------|----------------|----------------|
| Cherwell                 | 53,992         | 54,468         | 55,121         | 55,619         | 55,913         | 56,479         | 57,176         | 57,762         | 58,202         | 58,518         | 58,824         |
| Oxford                   | 52,097         | 52,611         | 53,042         | 53,520         | 54,427         | 55,579         | 56,497         | 57,015         | 57,621         | 57,953         | 58,537         |
| South Oxfordshire        | 54,000         | 54,215         | 54,727         | 54,815         | 54,934         | 55,135         | 55,356         | 55,586         | 56,035         | 56,182         | 56,387         |
| Vale of WH               | 46,741         | 47,043         | 47,382         | 47,778         | 48,143         | 48,644         | 49,048         | 49,540         | 50,092         | 50,515         | 51,068         |
| West Oxfordshire         | 39,906         | 40,228         | 40,826         | 41,370         | 41,762         | 42,675         | 43,620         | 44,632         | 45,147         | 45,331         | 45,528         |
| <i>Oxfordshire total</i> | <i>246,736</i> | <i>248,565</i> | <i>251,098</i> | <i>253,102</i> | <i>255,179</i> | <i>258,512</i> | <i>261,697</i> | <i>264,535</i> | <i>267,097</i> | <i>268,499</i> | <i>270,344</i> |

Source: Dwelling stock by Council Tax band, ONS from Neighbourhood Statistics, original source: Valuation Office Agency (VOA)

**Note**

- ❖ Council Tax bands reflect the capital value of the property and were last reviewed in April 1991.
- ❖ A typical Band A property is a purpose built single person unit. A Band D property is an average semi detached.

**For more information**

- ❖ More information and the source data is available for download from the Office for National Statistics Neighbourhood Statistics site at [www.neighbourhood.statistics.gov.uk](http://www.neighbourhood.statistics.gov.uk)



Data note prepared by: Margaret Melling, District Data Analysis Service, [mmelling@oxford.gov.uk](mailto:mmelling@oxford.gov.uk) 07958 239857 as part of the 2012-13 District Data Analysis Service.

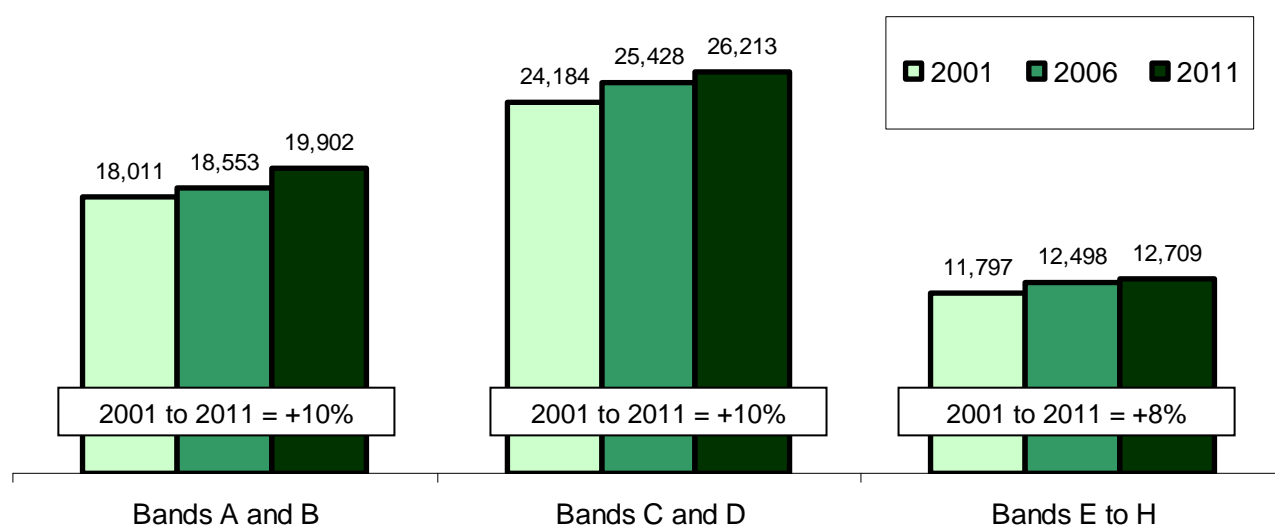
On behalf of: Cherwell District Council, Oxford City Council, South Oxfordshire District Council, Vale of White Horse District Council and West Oxfordshire District Council

Data notes and briefings from this service are available at [www.oxford.gov.uk/districtdataservice](http://www.oxford.gov.uk/districtdataservice)

## CHERWELL

- Between 2001 and 2011 Cherwell district saw an increase of 4,327 residential dwellings (+9%).
- The Council Tax band with the highest percentage growth of properties over this time period was Band A (+629 = +14%) and the band with the greatest number of additional properties was Band B (+1,262 = +9%).

### Growth in residential dwellings, 2001 to 2011 by grouped Council Tax bands - Cherwell

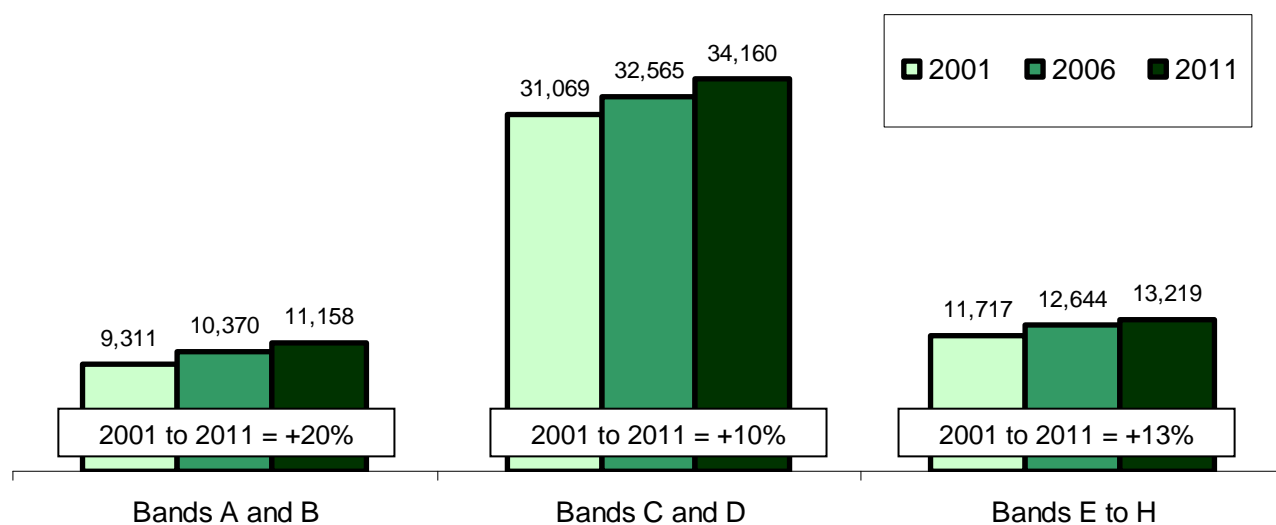


Source: ONS from Neighbourhood Statistics, original source: Valuation Office Agency (VOA)

## OXFORD

- Between 2001 and 2011 Oxford city saw an increase of 6,440 residential dwellings (+12%).
- The Council Tax band with the highest percentage growth of properties over this time period was Band B (+1,581 = +21%) and the band with the greatest number of additional properties was Band C (+1,923 = +12%).

Growth in residential dwellings, 2001 to 2011 by grouped Council Tax bands - **Oxford**

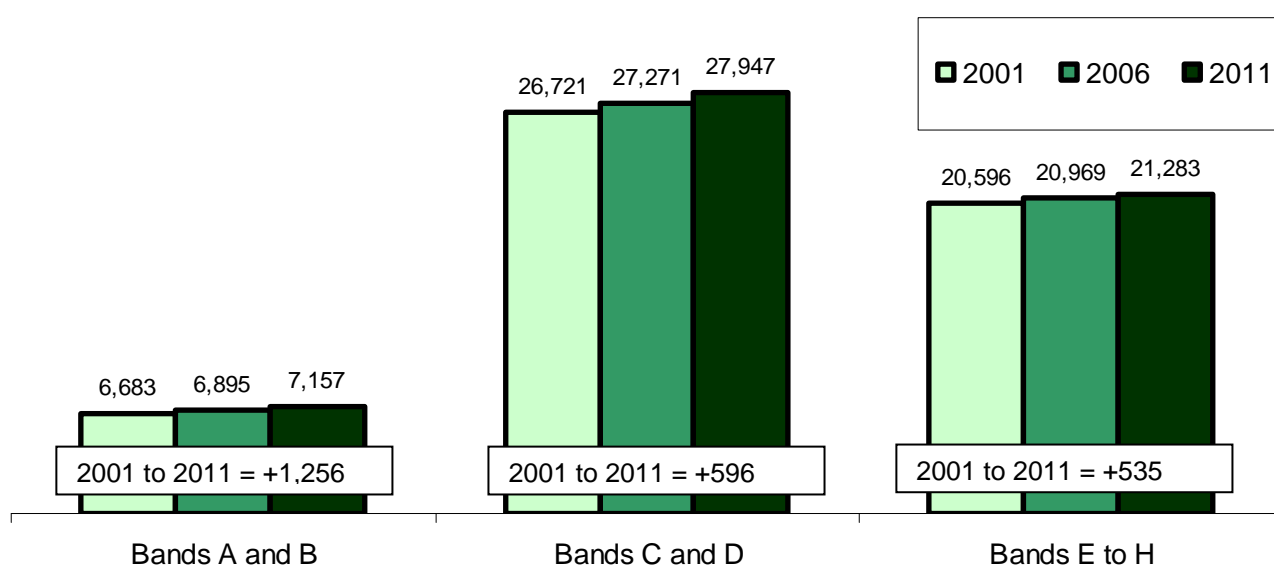


Source: ONS from Neighbourhood Statistics, original source: Valuation Office Agency (VOA)

## SOUTH OXFORDSHIRE

- Between 2001 and 2011 South Oxfordshire district saw an increase of 2,387 residential dwellings (+4%).
- The Council Tax band with the highest percentage growth of properties over this time period was Band H (+93 = +14%) and the band with the greatest number of additional properties was Band C (+805 = +6%).

Growth in residential dwellings, 2001 to 2011 by grouped Council Tax bands – **South Oxfordshire**

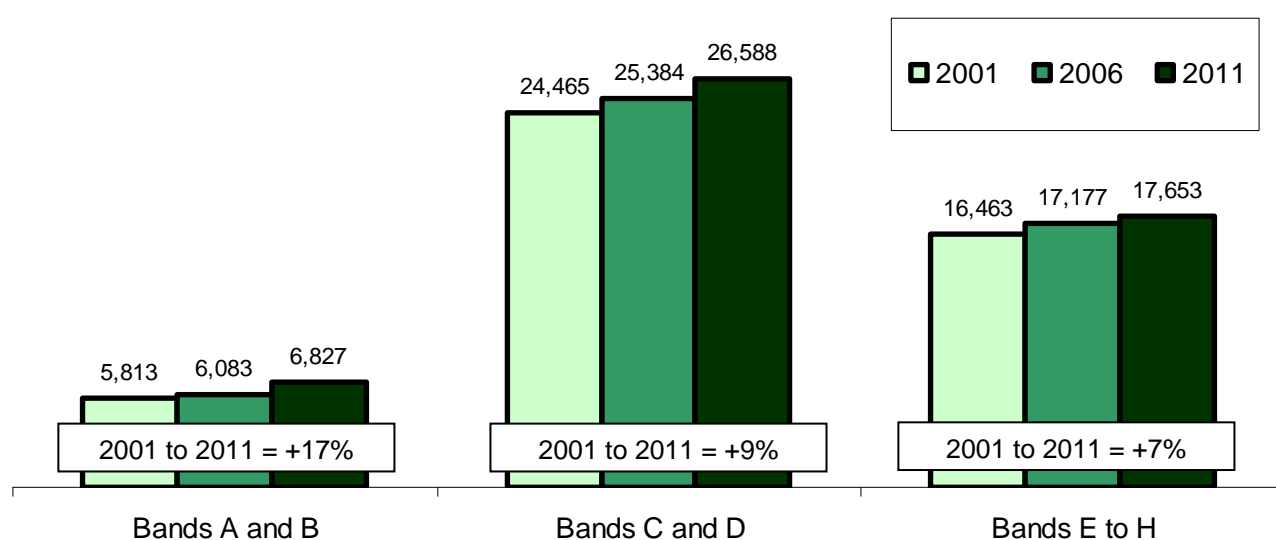


Source: ONS from Neighbourhood Statistics, original source: Valuation Office Agency (VOA)

### VALE OF WHITE HORSE

- Between 2001 and 2011 the Vale of White Horse district saw an increase of 4,327 residential dwellings (+9%).
- The Council Tax band with the highest percentage growth of properties over this time period was Band B (+950 = +22%) and the band with the greatest number of additional properties was Band C (+1,631 = +12%).

Growth in residential dwellings, 2001 to 2011 by grouped Council Tax bands – Vale of White Horse

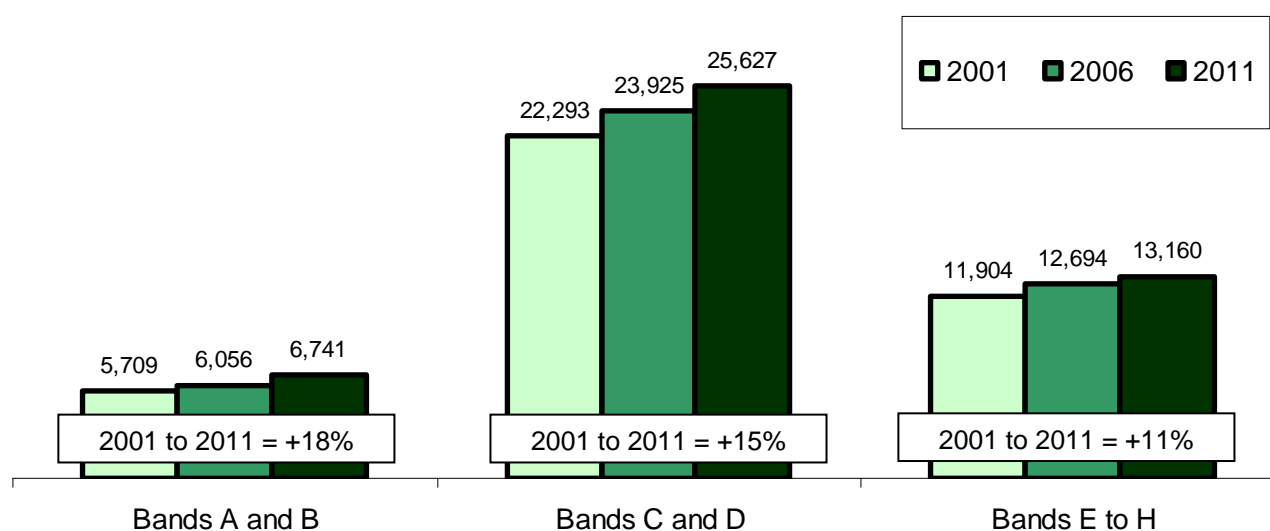


Source: ONS from Neighbourhood Statistics, original source: Valuation Office Agency (VOA)

## WEST OXFORDSHIRE

- Between 2001 and 2011 West Oxfordshire district saw an increase of 5,622 residential dwellings (+14%).
- The Council Tax band with the highest percentage growth of properties over this time period was Band B (+956 = +23%) and the band with the greatest number of additional properties was Band C (+2,046 = +15%).

Growth in residential dwellings, 2001 to 2011 by grouped Council Tax bands – West Oxfordshire



Source: ONS from Neighbourhood Statistics, original source: Valuation Office Agency (VOA)