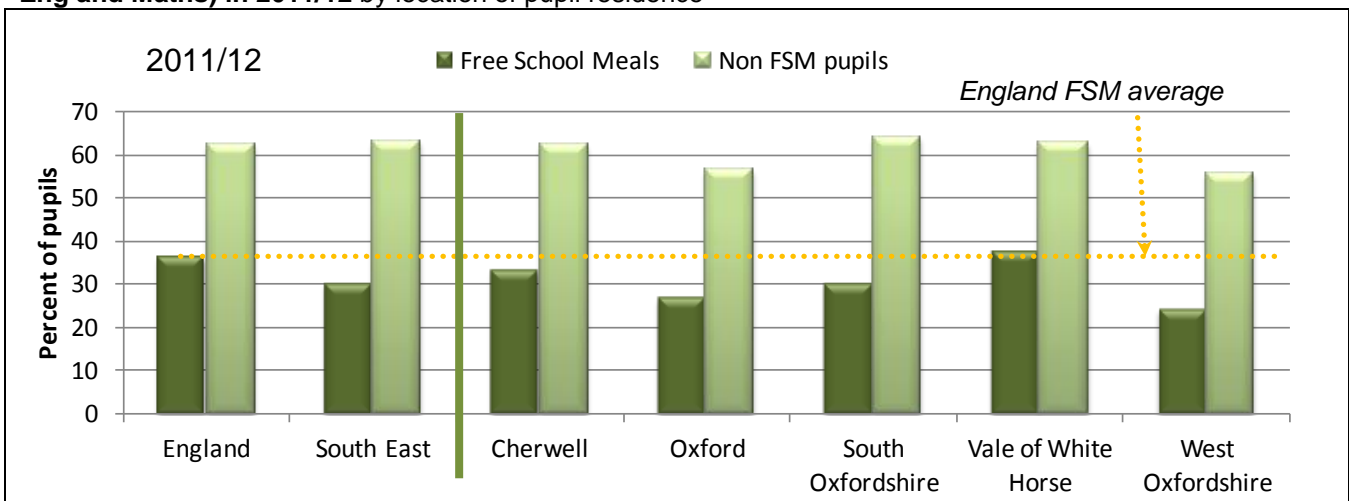


In Oxfordshire, fewer low income children achieve good GCSE grades than in other parts of the country

In all districts in Oxfordshire other than Vale of White Horse, pupils from lower income households (those eligible for Free School Meals) performed below the England average for lower income children on GCSE attainment.

- The district with the lowest rate of attainment in Oxfordshire in 2011/12 was West Oxfordshire where **24%** of pupils eligible for Free School Meals (FSM) attained 5 or more A*-C GCSEs (including English and Maths) compared with 36% of FSM pupils nationally.
- The gap in attainment between FSM and non-FSM pupils was greatest in South Oxfordshire.

Percent of (1) Pupils eligible and (2) not eligible for Free School Meals, achieving 5+ A*-C GCSEs (incl Eng and Maths) in 2011/12 by location of pupil residence



Source: Department for Education from Neighbourhood Statistics, data released 20 June 2013

2011/12 GCSE attainment FSM vs non-FSM by location of pupil residence

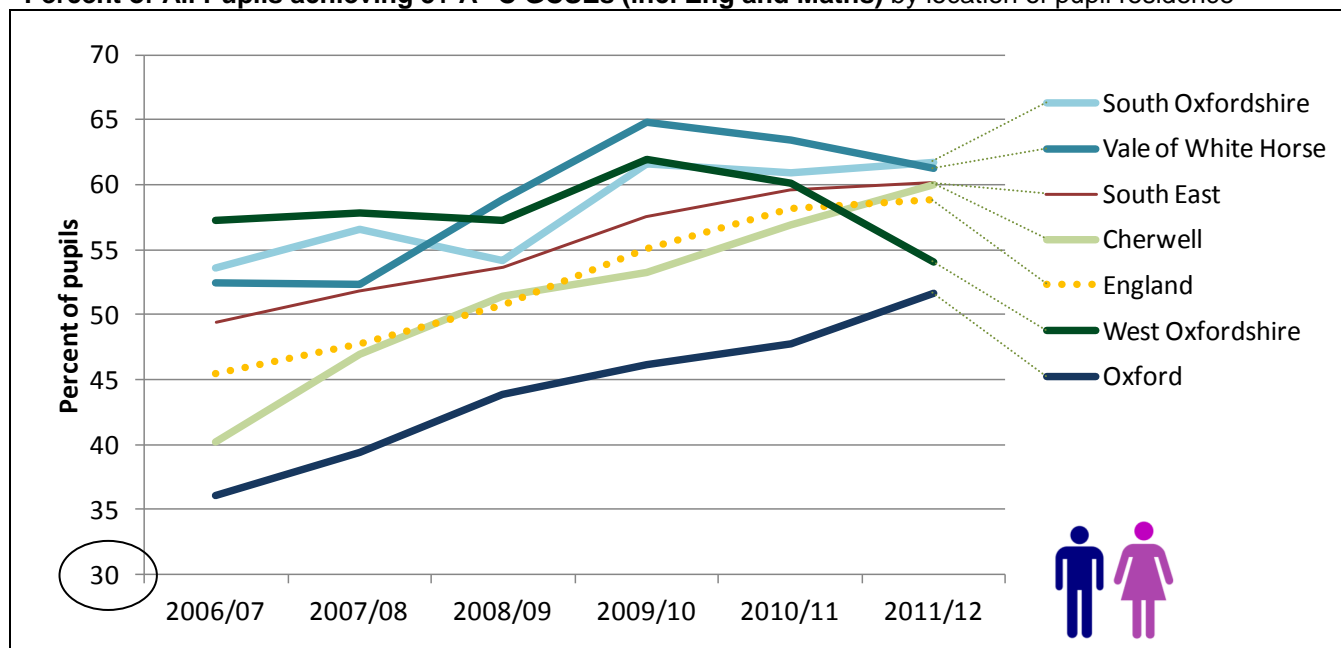
2011/12	Count and percent of pupils eligible for Free School Meals		% pupils attaining 5+ A* -C GCSEs incl English and Maths		Difference
			FSM	non-FSM	
England	80,177	14%	36.3	62.6	26.3
South East	7,831	9%	30	63.2	33.2
Cherwell	120	8%	33.3	62.5	29.2
Oxford	161	16%	26.7	56.7	30
South Oxfordshire	83	6%	30.1	63.9	33.8
Vale of White Horse	67	6%	37.3	62.8	25.5
West Oxfordshire	54	5%	24.1	55.7	31.6

Source: Department for Education from Neighbourhood Statistics

The overall trend in GCSE attainment shows a recent decline in Vale of White Horse and West Oxfordshire.

Attainment in Oxford city has continued to increase but remains below the national average.

Percent of All Pupils achieving 5+ A*-C GCSEs (incl Eng and Maths) by location of pupil residence

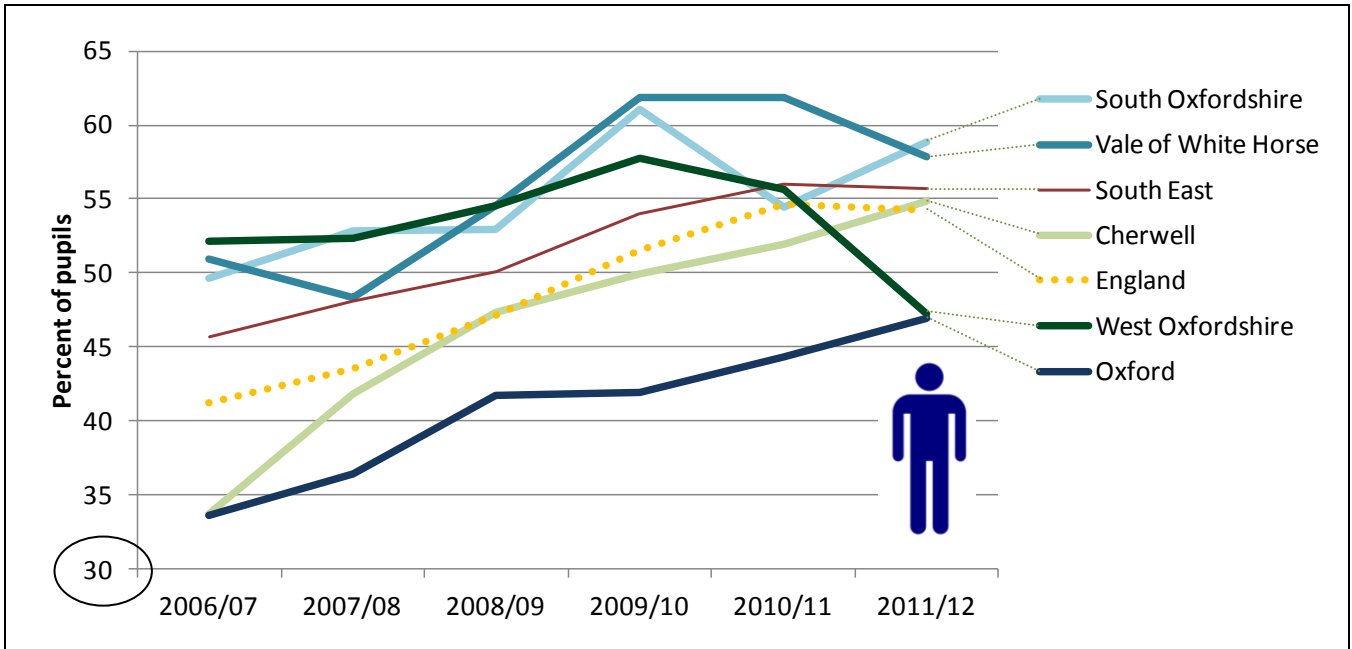


	2006/07	2007/08	2008/09	2009/10	2010/11	2011/12
England	45.5	47.8	50.7	55.1	58.2	58.8
South East	49.4	51.8	53.7	57.5	59.6	60.2
Cherwell	40.2	47	51.4	53.3	56.9	60
Oxford	36.1	39.4	43.9	46.2	47.7	51.7
South Oxfordshire	53.6	56.6	54.2	61.6	60.9	61.7
Vale of White Horse	52.5	52.3	58.9	64.8	63.4	61.2
West Oxfordshire	57.2	57.8	57.2	61.9	60.1	54

Source: Department for Education from Neighbourhood Statistics

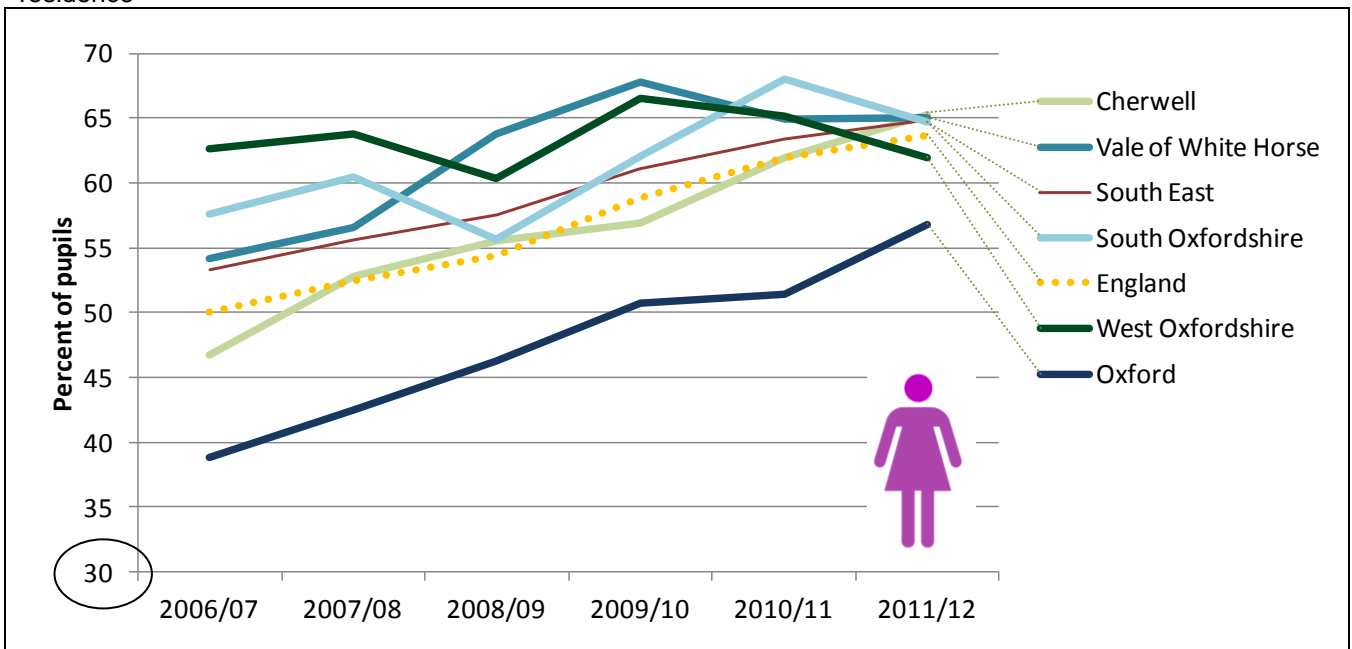
The recent trend in GCSE attainment for boy pupils in West Oxfordshire shows a steeper decline than for girls. However, as with South Oxfordshire in 2010/11, this may be a temporary rather than long term change.

Percent of BOY Pupils achieving 5+ A*-C GCSEs including English and Maths by location of pupil residence



Source: Department for Education from Neighbourhood Statistics

Percent of GIRL Pupils achieving 5+ A*-C GCSEs including English and Maths by location of pupil residence



Source: Department for Education from Neighbourhood Statistics

Percent of BOY and GIRL Pupils achieving 5+ A*-C GCSEs including English and Maths by location of pupil residence

BOYS	2006/07	2007/08	2008/09	2009/10	2010/11	2011/12
England	41.2	43.5	47.1	51.5	54.6	54.2
South East	45.7	48.1	50.1	54	56	55.7
Cherwell	33.7	41.8	47.3	49.9	51.9	54.8
Oxford	33.6	36.4	41.7	41.9	44.3	46.9
South Oxfordshire	49.6	52.8	52.9	61.1	54.4	58.8
Vale of White Horse	50.9	48.3	54.5	61.9	61.9	57.8
West Oxfordshire	52.1	52.3	54.5	57.7	55.6	47.2
GIRLS	2006/07	2007/08	2008/09	2009/10	2010/11	2011/12
England	50.1	52.4	54.4	58.9	61.9	63.7
South East	53.3	55.6	57.5	61.1	63.4	64.9
Cherwell	46.7	52.8	55.5	56.9	61.9	65.3
Oxford	38.8	42.5	46.3	50.7	51.4	56.8
South Oxfordshire	57.6	60.5	55.6	62.1	68	64.7
Vale of White Horse	54.2	56.6	63.8	67.8	64.9	65
West Oxfordshire	62.6	63.8	60.3	66.5	65.1	61.9

Source: Department for Education from Neighbourhood Statistics

Notes

- ❖ Ten datasets on Educational Attainment including the data used in this publication were made available on the Neighbourhood Statistics website on 20 June 2013.
- ❖ Data is for pupils in maintained schools in England and who are resident in England.
- ❖ The data, supplied by the Department for Education, are classed as National Statistics.
- ❖ According to the Department for Education, parents can register a child for Free School Meals if they receive any of the following benefits:
 - Income Support
 - Income-based Jobseeker's Allowance
 - Income-related Employment and Support Allowance
 - Support under Part VI of the Immigration and Asylum Act 1999
 - The Guarantee element of State Pension Credit
 - Child Tax Credit, provided they are not entitled to Working Tax Credit and have an annual income (as assessed by HM Revenue & Customs) that does not exceed £16,190
 - Working Tax Credit 'run-on' - the payment someone may receive for a further four weeks after they stop qualifying for Working Tax Credit

For more information

- ❖ More information and the source data is available for download from Neighbourhood Statistics at www.neighbourhood.statistics.gov.uk. Further data – including data by school - is available from Department for Education at www.education.gov.uk



Chart prepared by: Margaret Melling, District Data Analysis Service, mmelling@oxford.gov.uk 07958 239857 as part of the 2013-14 District Data Analysis Service.

On behalf of: Cherwell District Council, Oxford City Council, South Oxfordshire District Council, Vale of White Horse District Council and West Oxfordshire District Council

Publications from this service are available at www.oxford.gov.uk/districtdataservice