

Recession impacts business enterprises in Oxfordshire, especially in rural districts

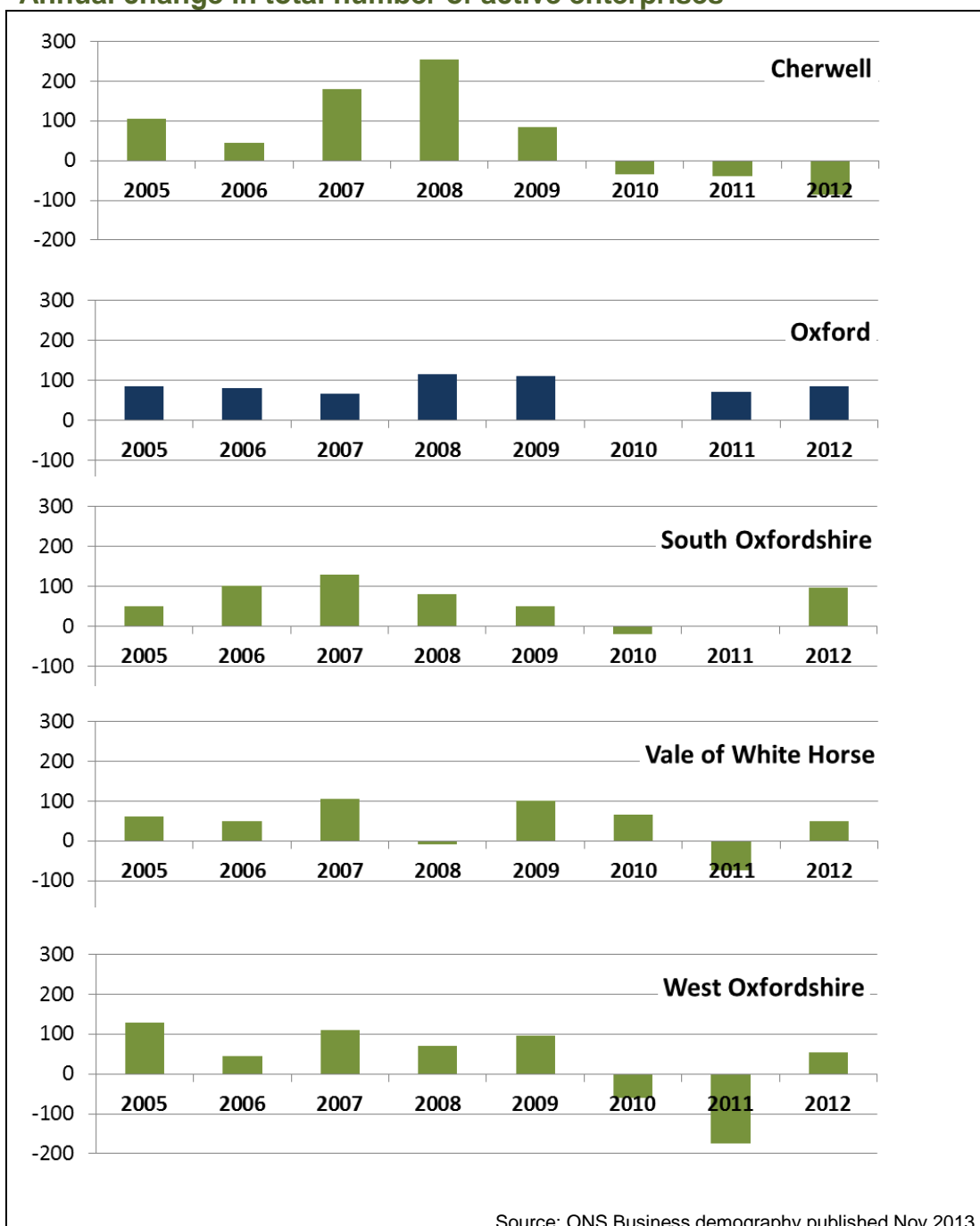
- In terms of active business enterprises, Cherwell and West Oxfordshire appear to have seen the most significant impact of the 2008 recession with a net decline in the number of active enterprises between 2008 and 2012.
- Unemployment however remains below average.

Change in number of active enterprises 2008 to 2012

Cherwell	-75	-1%
Oxford	265	6%
South Oxfordshire	125	2%
Vale of White Horse	140	3%
West Oxfordshire	-85	-2%

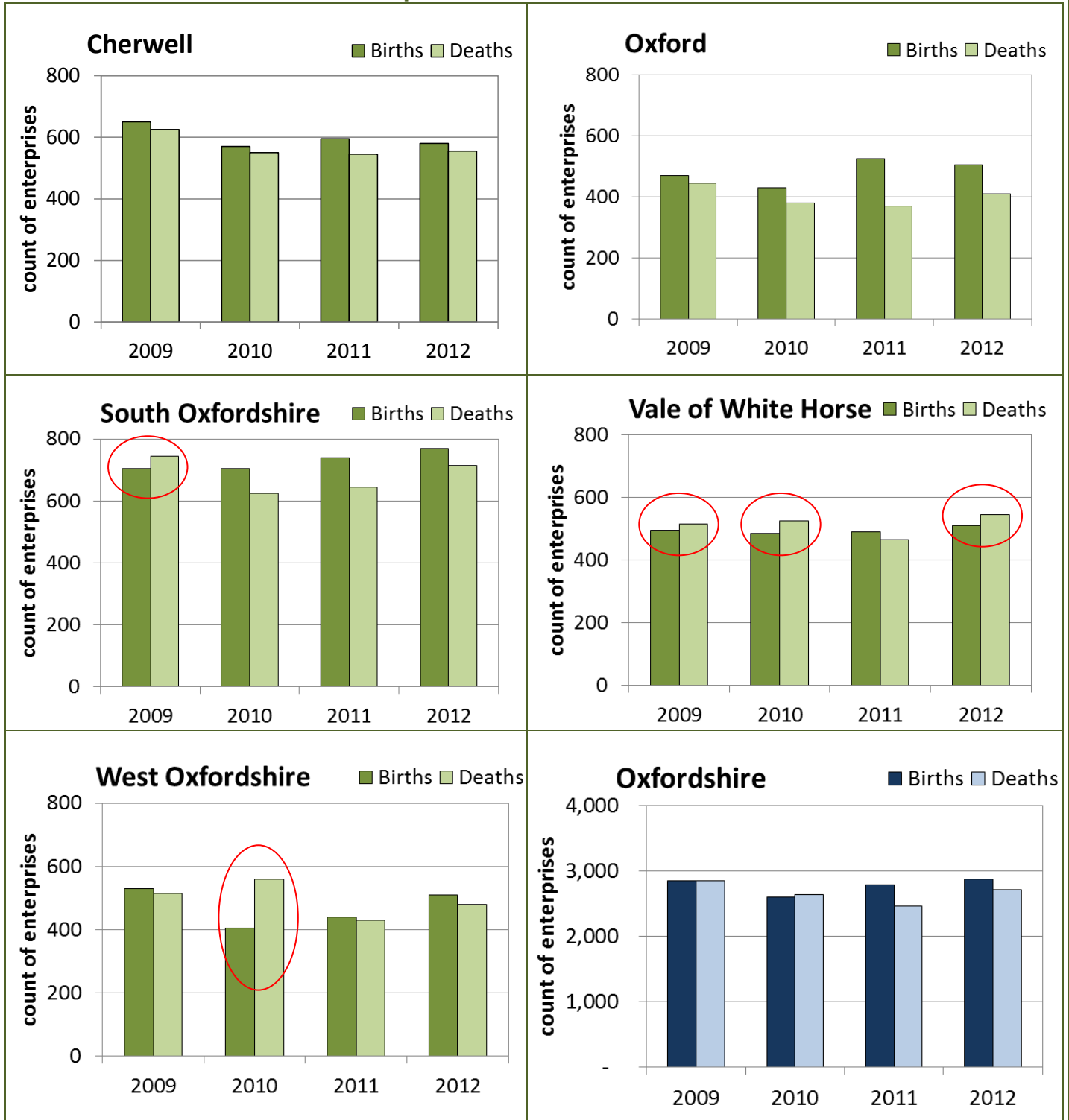
Source: ONS Business demography published Nov 2013

Annual change in total number of active enterprises



- The business births and deaths data shows that the biggest difference between births and deaths of any Oxfordshire district was in West Oxfordshire in 2010 with 155 more business deaths than births – a loss in active enterprises that has not yet been recovered.

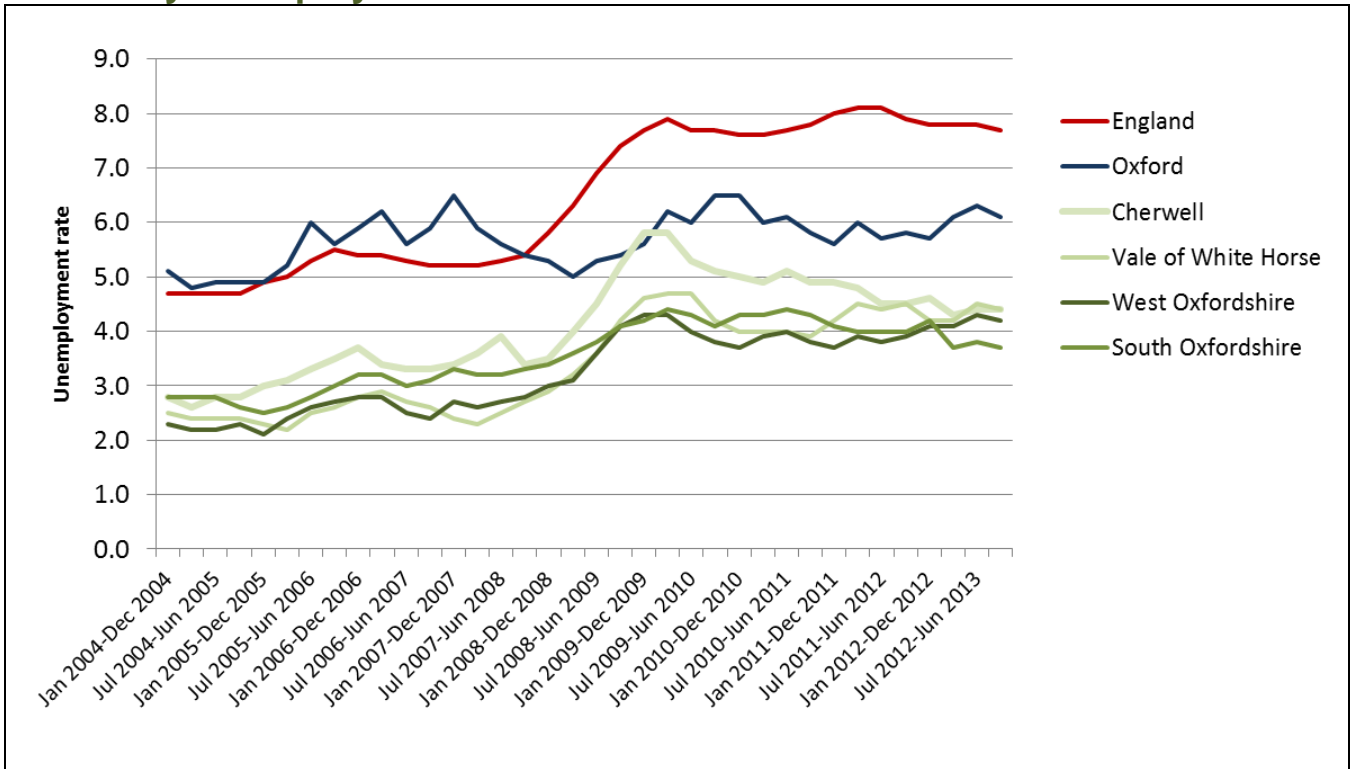
Births and deaths of active enterprises



Source: ONS Business demography published Nov 2013

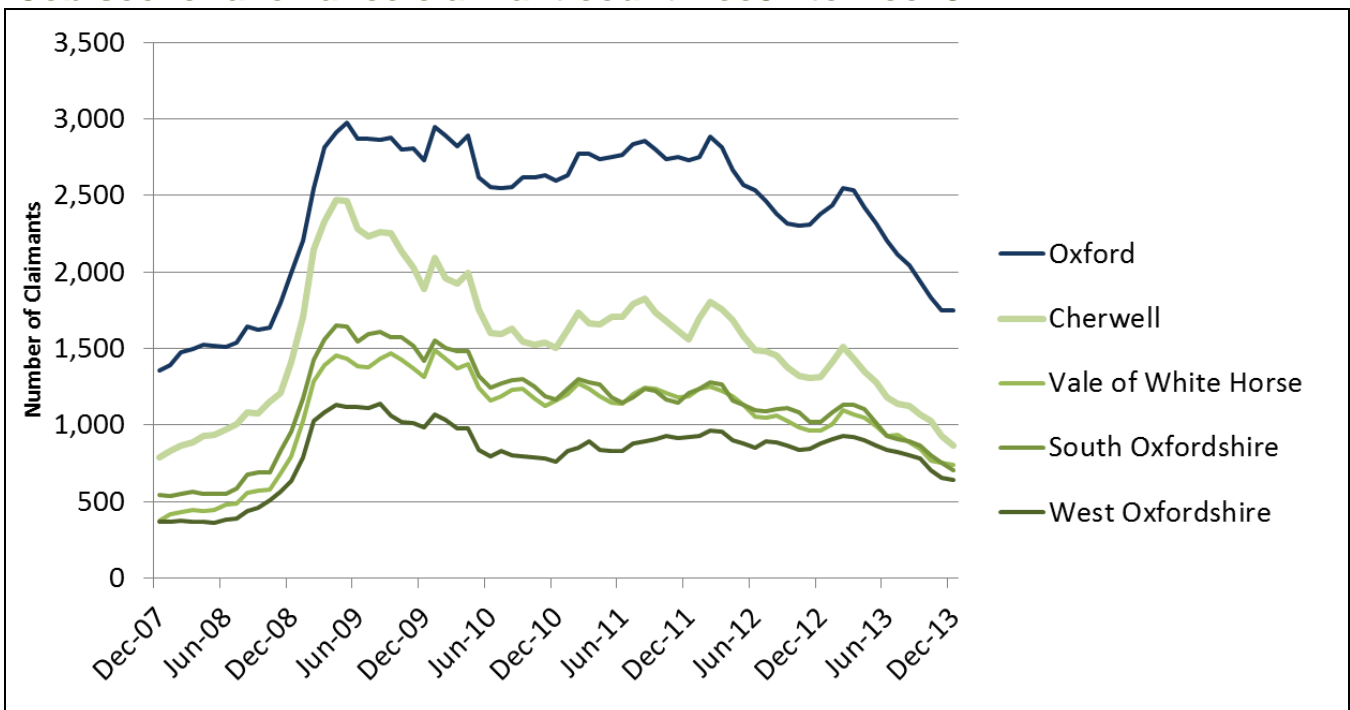
- Despite the impact of the recession on business enterprises, the rate of unemployment remains below average in all districts (see unemployment rate chart below) and the number of people claiming job seeker allowance has fallen each month since February 2013.

Quarterly unemployment rate model based estimates



Source: ONS Annual Population survey, unemployment count as a percentage of the economically active population aged 16+. Data is subject to confidence intervals (not shown)

Job seeker allowance claimant count Dec07 to Dec13



Source: DWP from nomis

DATA TABLES

Count of active enterprises

	2004	2005	2006	2007	2008	2009	2010	2011	2012
Cherwell	5,660	5,765	5,810	5,990	6,245	6,330	6,295	6,255	6,170
Oxford	4,015	4,100	4,180	4,245	4,360	4,470	4,470	4,540	4,625
South Oxfordshire	7,300	7,350	7,450	7,580	7,660	7,710	7,690	7,690	7,785
Vale of White Horse	5,145	5,205	5,255	5,360	5,350	5,450	5,515	5,440	5,490
West Oxfordshire	5,105	5,235	5,280	5,390	5,460	5,555	5,495	5,320	5,375

Births and deaths of active enterprises

	2009	2010	2011	2012
Cherwell				
Births	650	570	595	580
Deaths	625	550	545	555
<i>difference</i>	25	20	50	25
Oxford				
Births	470	430	525	505
Deaths	445	380	370	410
<i>difference</i>	25	50	155	95
South Oxfordshire				
Births	705	705	740	770
Deaths	745	625	645	715
<i>difference</i>	-40	80	95	55
Vale of White Horse				
Births	495	485	490	510
Deaths	515	525	465	545
<i>difference</i>	-20	-40	25	-35
West Oxfordshire				
Births	530	405	440	510
Deaths	515	560	430	480
<i>difference</i>	15	-155	10	30
Oxfordshire total				
Births	2,850	2,595	2,790	2,875
Deaths	2,845	2,640	2,455	2,705
<i>difference</i>	5	-45	335	170

Source: ONS Business demography published Nov 2013

Data downloaded from <http://www.ons.gov.uk/ons/rel/bus-register/business-demography/2012/stb-business-demography-2012.html>

Data note prepared by: Margaret Melling, District Data Analysis Service, mmelling@oxford.gov.uk 07958 239857 as part of the 2013-14 District Data Analysis Service.

On behalf of: Cherwell District Council, Oxford City Council, South Oxfordshire District Council, Vale of White Horse District Council and West Oxfordshire District Council

Data notes and briefings from this service are available at www.oxford.gov.uk/districtdataservice

