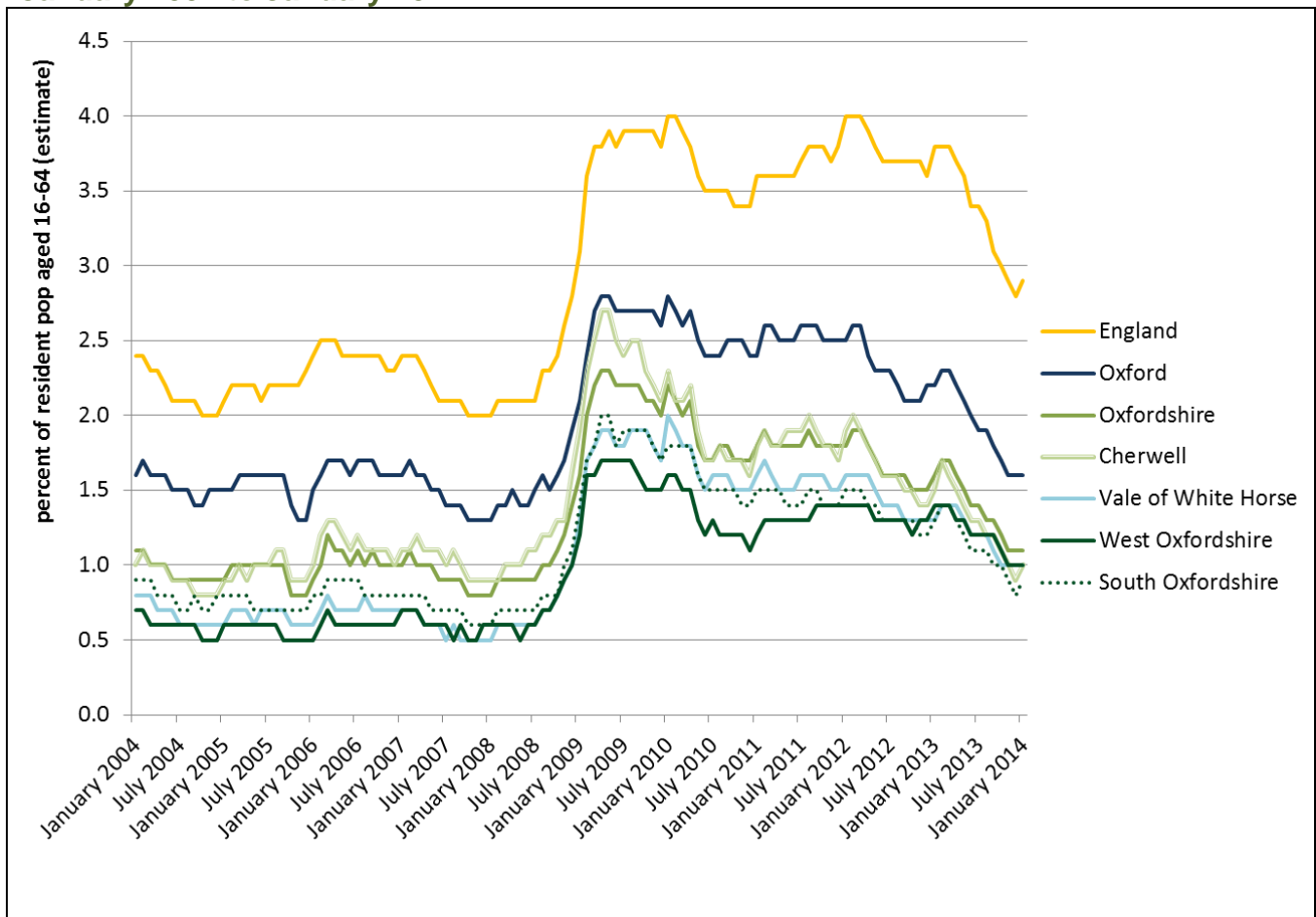


Unemployment in Oxfordshire remains below average and detailed Census data highlights issues of youth unemployment and health

- The Office for National Statistics Labour Force Survey published 19 February 2014 showed a drop in overall UK unemployment to 7.2% of the economically active population (aged 16+), a fall of 0.4 percentage points between July-Sept 2013 and Oct-Dec 2013. Equivalent data is not available at local authority level.
- The latest Department of Work and Pensions data (January 2014) shows a continued fall in the proportion of the population claiming job seeker allowance in all districts in Oxfordshire, remaining well below the England average.

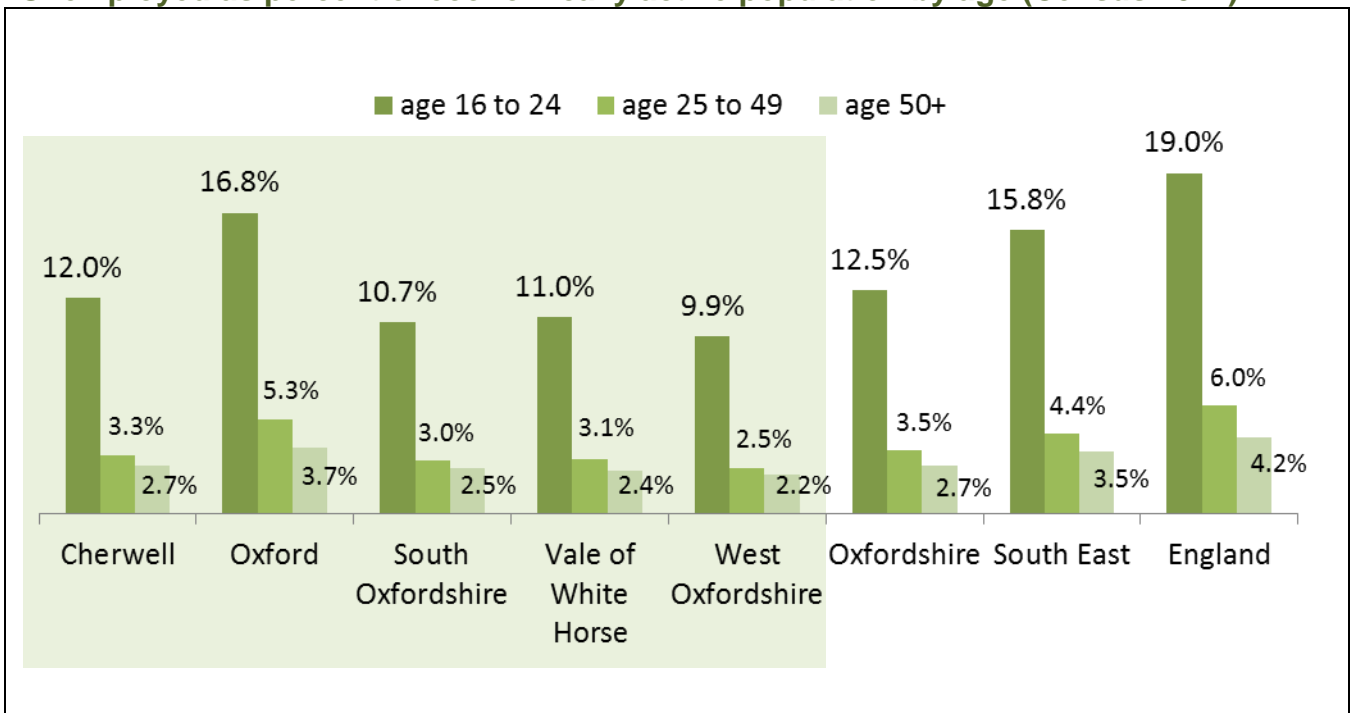
People claiming job seeker allowance as percent of resident population aged 16 to 64 January 2004 to January 2014



Source: DWP from nomis

- Detailed data from the Census 2011 survey is still being released and more information is now available on characteristics of the population who were unemployed at the time of the survey on 27 March 2011.
- At the time of the census, **young people aged 16 to 24 in Oxfordshire were over three times as likely to be unemployed** as those in the 25 to 49 age group.
- 17% of economically active young people (i.e. not including full time students) in Oxford city were unemployed, a rate above the regional average (16%) but below the national average (19%).

Unemployed as percent of economically active population by age (Census 2011)



Source: ONS Census 2011 table LC6301

The following charts show the number of people unemployed in Oxfordshire districts by broad age group and gender. Overall 5,900 (37%) of unemployed people in Oxfordshire were aged 16 to 24.

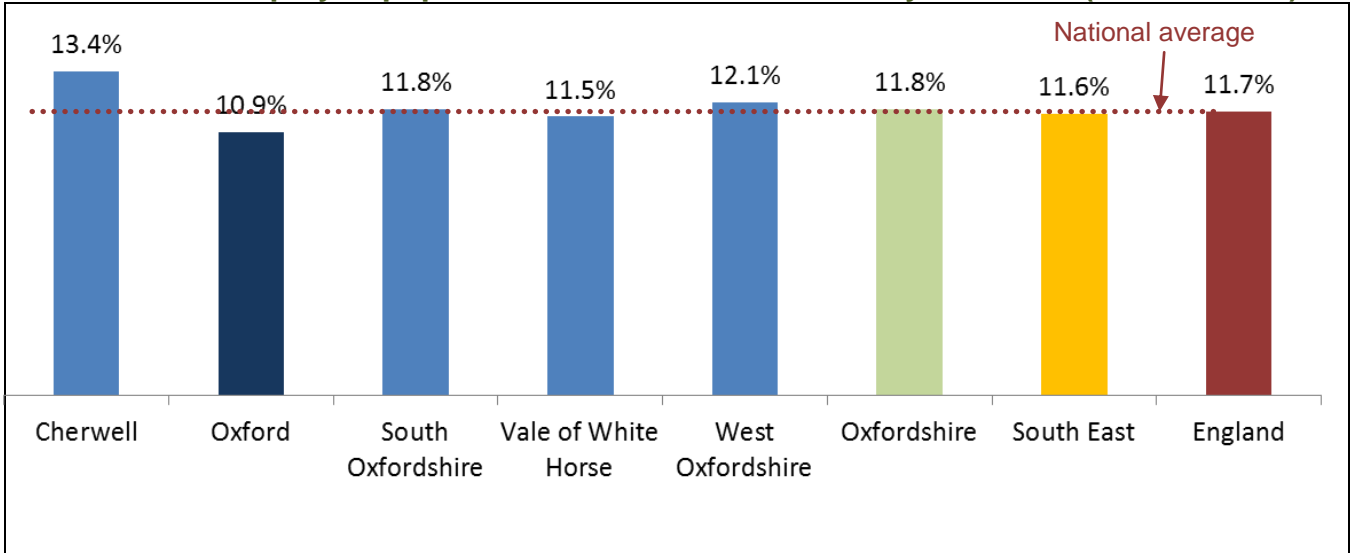
Unemployed population by age and gender (Census 2011)



Source: ONS Census 2011 table DC6201

- Of the unemployed population, a higher than average proportion in Cherwell, South Oxfordshire and West Oxfordshire had activities limited by ill health or disability.

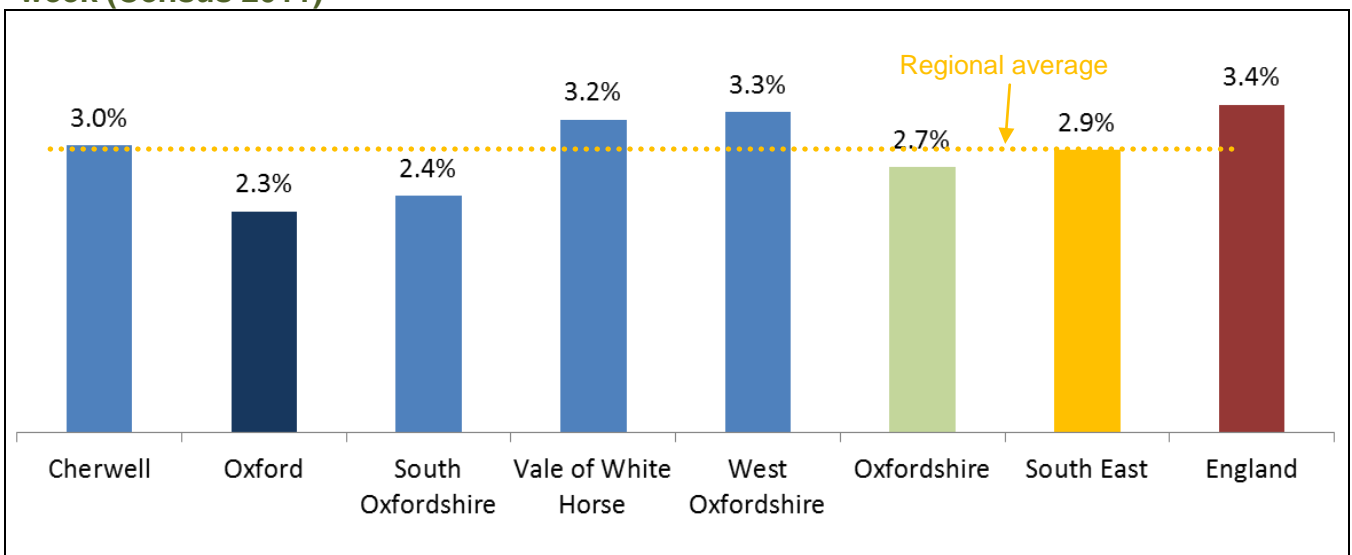
Percent of unemployed population with activities limited by ill health* (Census 2011)



Source: ONS Census 2011 table LC6302; *activities limited "a little" and "a lot"

- The proportion of the unemployed population providing unpaid care for 20 or more hours per week was 2.7% in Oxfordshire and above the regional average in Cherwell, Vale of White Horse and West Oxfordshire.

Percent of unemployed population providing unpaid care for 20 or more hours per week (Census 2011)



Source: ONS Census 2011 table LC6301

DATA TABLES

Claimant count as proportion of resident population aged 16 to 64

| | January 2008 | January 2009 | January 2010 | January 2011 | January 2012 | January 2013 | January 2014 | Jan13 to Jan14 |
|-------------------|--------------|--------------|--------------|--------------|--------------|--------------|--------------|----------------|
| Cherwell | 0.9 | 1.9 | 2.3 | 1.8 | 1.9 | 1.5 | 1.0 | -0.5 |
| Oxford | 1.3 | 2.1 | 2.8 | 2.4 | 2.5 | 2.2 | 1.6 | -0.6 |
| South Oxfordshire | 0.6 | 1.4 | 1.8 | 1.5 | 1.5 | 1.3 | 0.9 | -0.4 |
| Vale of WH | 0.5 | 1.3 | 2.0 | 1.6 | 1.6 | 1.3 | 1.0 | -0.3 |
| West Oxfordshire | 0.6 | 1.2 | 1.6 | 1.2 | 1.4 | 1.4 | 1.0 | -0.4 |
| Oxfordshire | 0.8 | 1.6 | 2.2 | 1.8 | 1.8 | 1.6 | 1.1 | -0.5 |
| England | 2.0 | 3.1 | 4.0 | 3.6 | 4.0 | 3.8 | 2.9 | -0.9 |

Source: DWP from nomis

Unemployed population with activities limited by ill health

| | All unemployed | Day-to-day activities limited a lot | Day-to-day activities limited a little | activities limited a little or a lot | as % of unemployed |
|-------------------|----------------|-------------------------------------|--|--------------------------------------|--------------------|
| Cherwell | 3,339 | 125 | 322 | 447 | 13.4% |
| Oxford | 5,118 | 121 | 436 | 557 | 10.9% |
| South Oxfordshire | 2,740 | 68 | 256 | 324 | 11.8% |
| Vale of WH | 2,535 | 61 | 231 | 292 | 11.5% |
| West Oxfordshire | 1,996 | 44 | 198 | 242 | 12.1% |
| Oxfordshire | 15,728 | 419 | 1,443 | 1,862 | 11.8% |

ONS Census 2011 table LC6302

Unemployed population providing unpaid care

| | All unemployed | Provides 20 to 49 hours unpaid care a week | Provides 50 or more hours unpaid care a week | 20 or more hours per week | as % of unemployed |
|-------------------|----------------|--|--|---------------------------|--------------------|
| Cherwell | 3,339 | 46 | 53 | 99 | 3.0% |
| Oxford | 5,118 | 63 | 54 | 117 | 2.3% |
| South Oxfordshire | 2,740 | 29 | 38 | 67 | 2.4% |
| Vale of WH | 2,535 | 42 | 40 | 82 | 3.2% |
| West Oxfordshire | 1,996 | 33 | 33 | 66 | 3.3% |
| Oxfordshire | 15,728 | 213 | 218 | 431 | 2.7% |

ONS Census 2011 table LC6302

Data note prepared by: Margaret Melling, District Data Analysis Service, mmelling@oxford.gov.uk 07958 239857 as part of the 2013-14 District Data Analysis Service.

On behalf of: Cherwell District Council, Oxford City Council, South Oxfordshire District Council, Vale of White Horse District Council and West Oxfordshire District Council

Data notes and briefings from this service are available at www.oxford.gov.uk/districtdataservice

