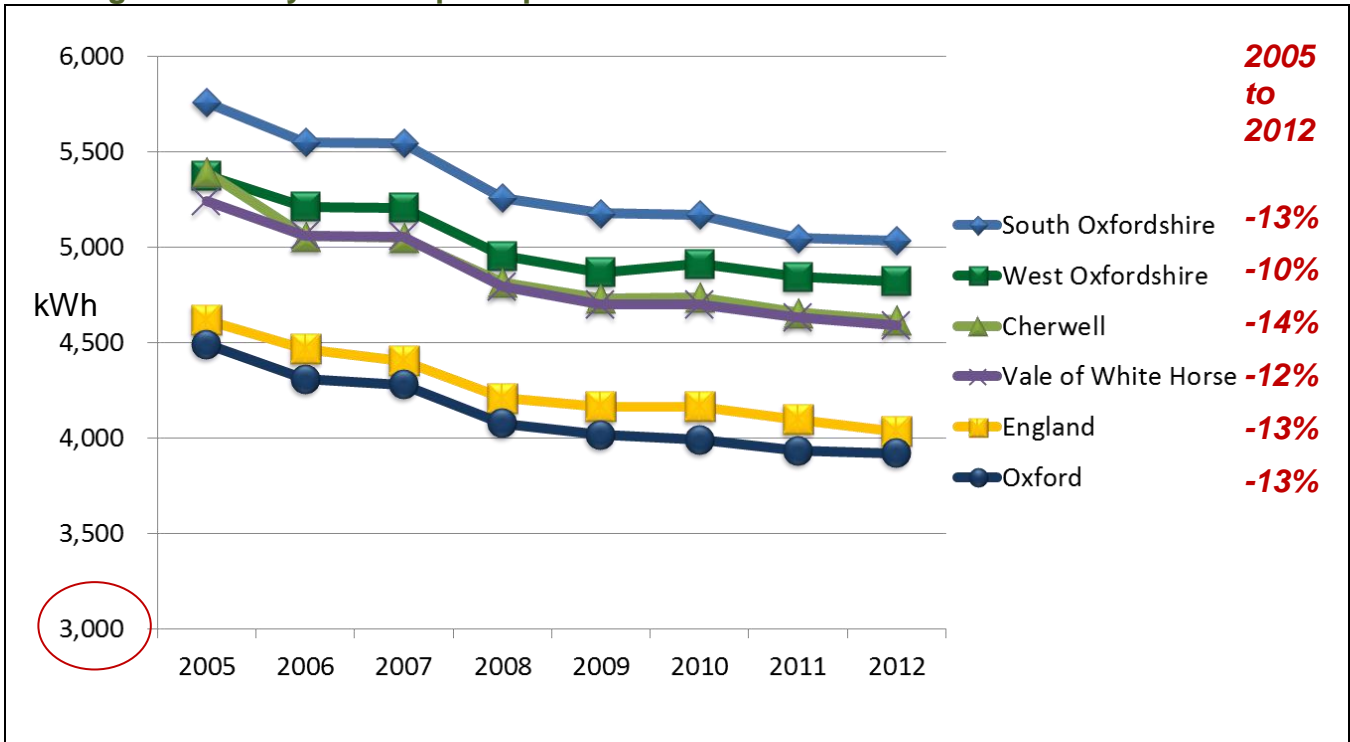


Domestic energy consumption in rural Oxfordshire remains above average

- According to the Department for Energy and Climate Change, between 2005 and 2012 the average domestic electricity consumption (per meter) in each of Oxfordshire's districts reduced by a minimum of 10%.
- Average consumption in Oxfordshire's rural districts, however, remains well above the England average.

Average electricity consumption per domestic meter kWh



Source: Dept for Energy and Climate Change, sub national electricity consumption statistics at local authority level 2005-2012

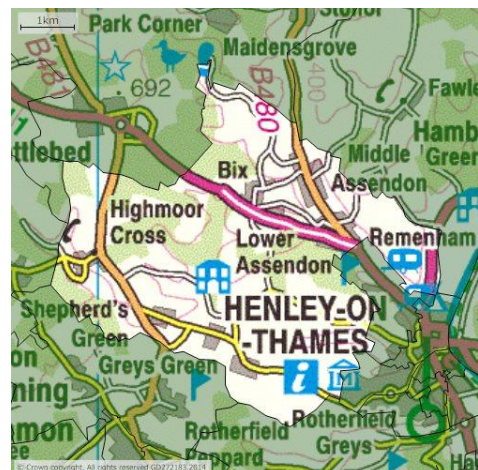
Areas with the lowest and highest average domestic electricity consumption in 2012 were..

LOWEST 3,016 kWh

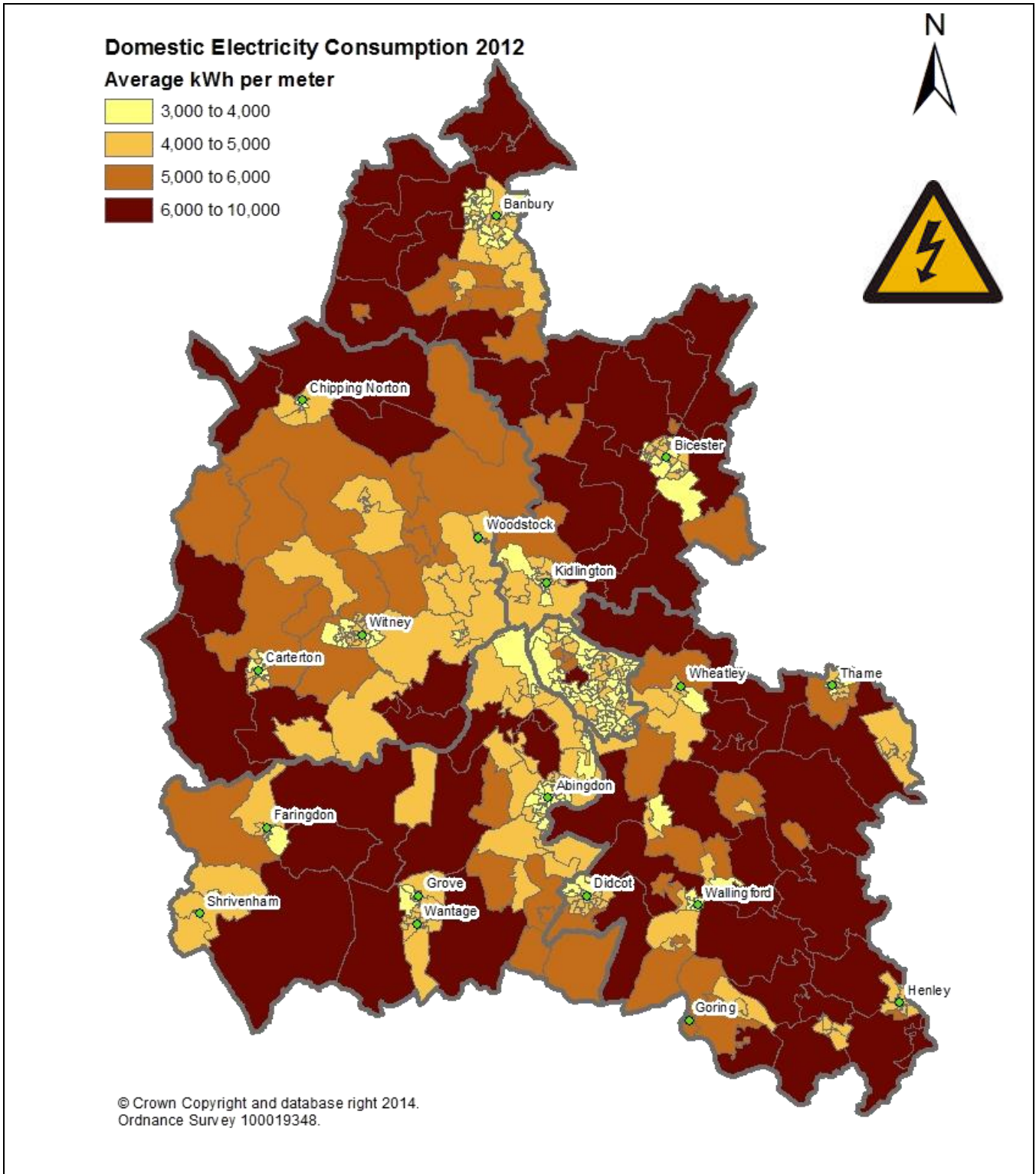
- part of Blackbird Leys in Oxford

HIGHEST 9,063 kWh

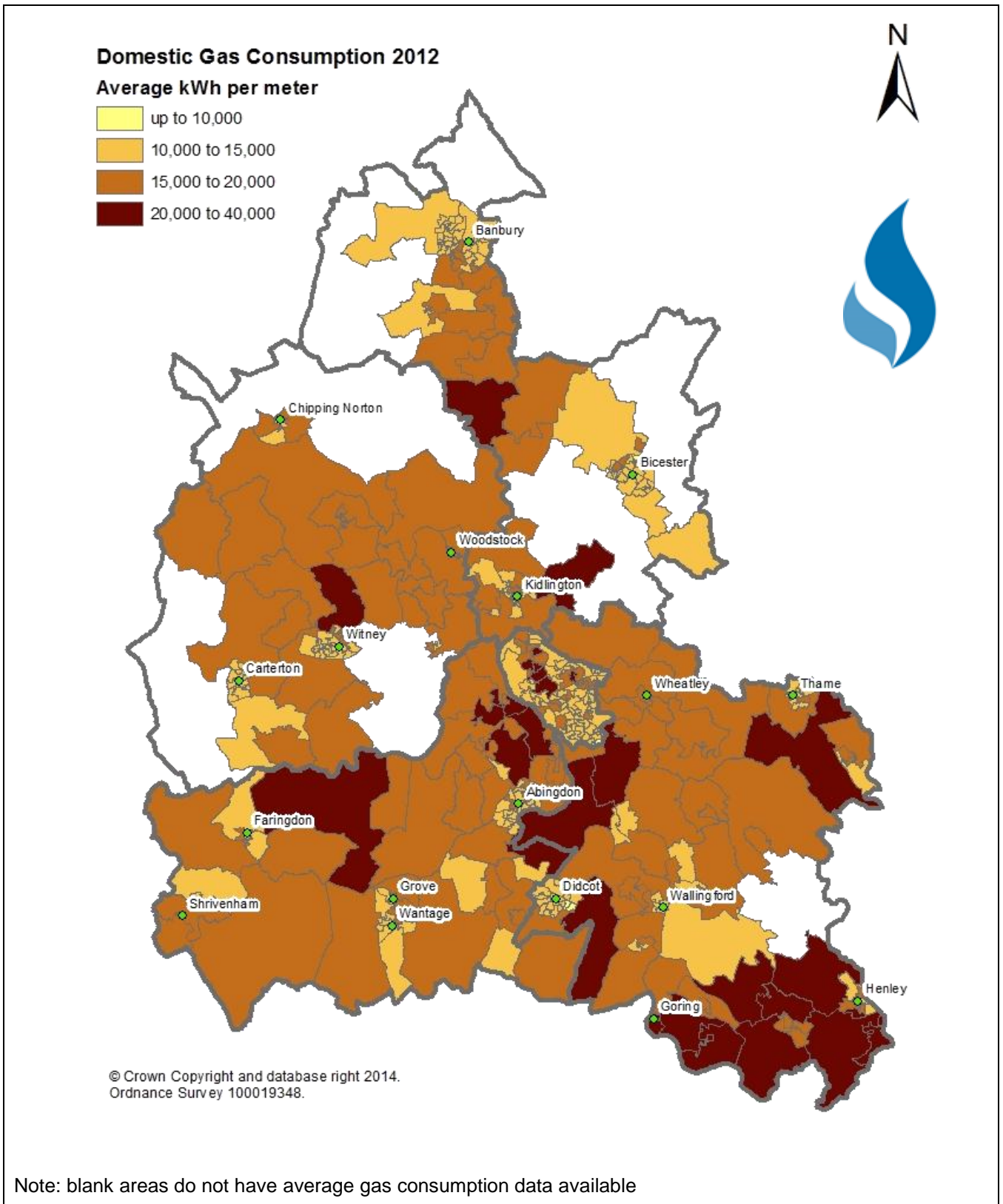
- a rural area outside Henley in South Oxfordshire



- The following two maps show average domestic electricity and average gas consumption in Oxfordshire in 2012 – the darker shaded areas are those with the highest levels of consumption.

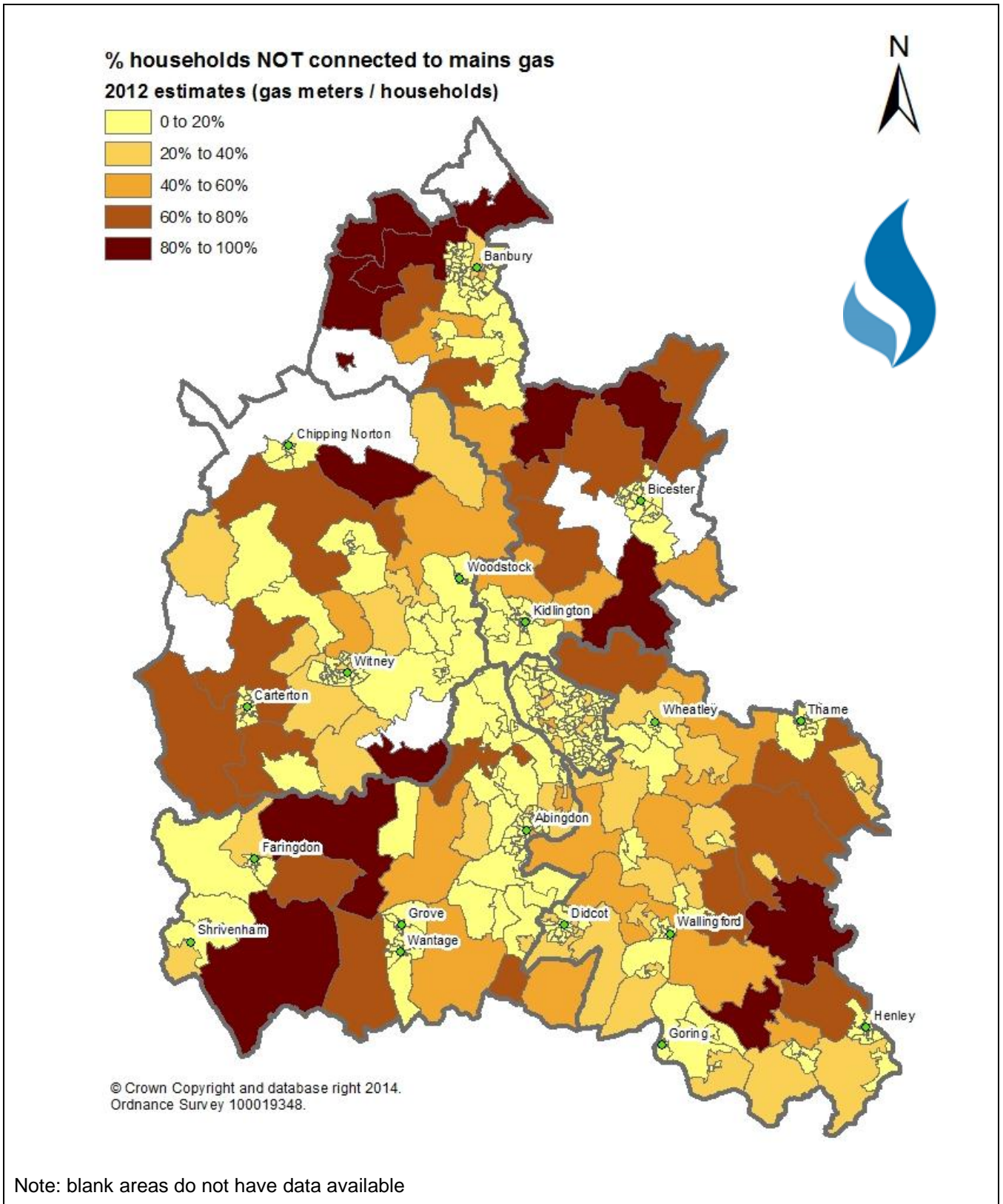


Source: Dept for Energy and Climate Change, downloaded from <https://www.gov.uk/government/publications/lsoa-electricity-and-gas-2012-experimental>



Source: Dept for Energy and Climate Change, downloaded from <https://www.gov.uk/government/publications/lsoa-electricity-and-gas-2012-experimental>

Some areas of the county do not have access to mains gas (see map below). This will have an affect on the average electricity consumption data.



Source: Dept for Energy and Climate Change, downloaded from <https://www.gov.uk/government/publications/isoa-estimates-of-households-not-connected-to-the-gas-network>

Average electricity consumption per domestic meter kWh

	2005	2006	2007	2008	2009	2010	2011	2012	2005 to 2012	
Cherwell	5,393	5,058	5,050	4,814	4,732	4,738	4,656	4,617	-776	-14%
Oxford	4,488	4,307	4,278	4,076	4,014	3,990	3,932	3,918	-570	-13%
South Oxfordshire	5,757	5,548	5,544	5,258	5,177	5,169	5,047	5,033	-724	-13%
Vale of White Horse	5,239	5,060	5,054	4,793	4,698	4,698	4,630	4,589	-650	-12%
West Oxfordshire	5,375	5,211	5,205	4,953	4,868	4,911	4,844	4,820	-554	-10%
England	4,618	4,467	4,404	4,209	4,163	4,163	4,095	4,034	-584	-13%

Source: Dept for Energy and Climate Change, <https://www.gov.uk/government/statistical-data-sets/regional-and-local-authority-electricity-consumption-statistics-2005-to-2011>

Notes:

- ❖ Gas and electricity consumption data sets are not directly comparable as the statistics relate to slightly a different calendar period and gas consumption (the majority of which is for domestic heating) is adjusted to take account of the weather (so 'normalised' from one year to the next).
- ❖ Gas consumption figures are known to include some small businesses since the cut off point for 'domestic' consumption is set fairly high (at <73,200 kWh/yr).

Finding out more:

- ❖ Sub-national consumption statistics: methodology and guidance booklet
<https://www.gov.uk/government/publications/regional-energy-data-guidance-note>

Data note prepared by: Margaret Melling, District Data Analysis Service, mmelling@oxford.gov.uk 07958 239857 as part of the 2014-15 District Data Analysis Service.

On behalf of: Cherwell District Council, Oxford City Council, South Oxfordshire District Council, Vale of White Horse District Council and West Oxfordshire District Council

Data notes and briefings from this service are available at www.oxford.gov.uk/districtdataservice

