

Chart of the Month May 2021– Youth Unemployment

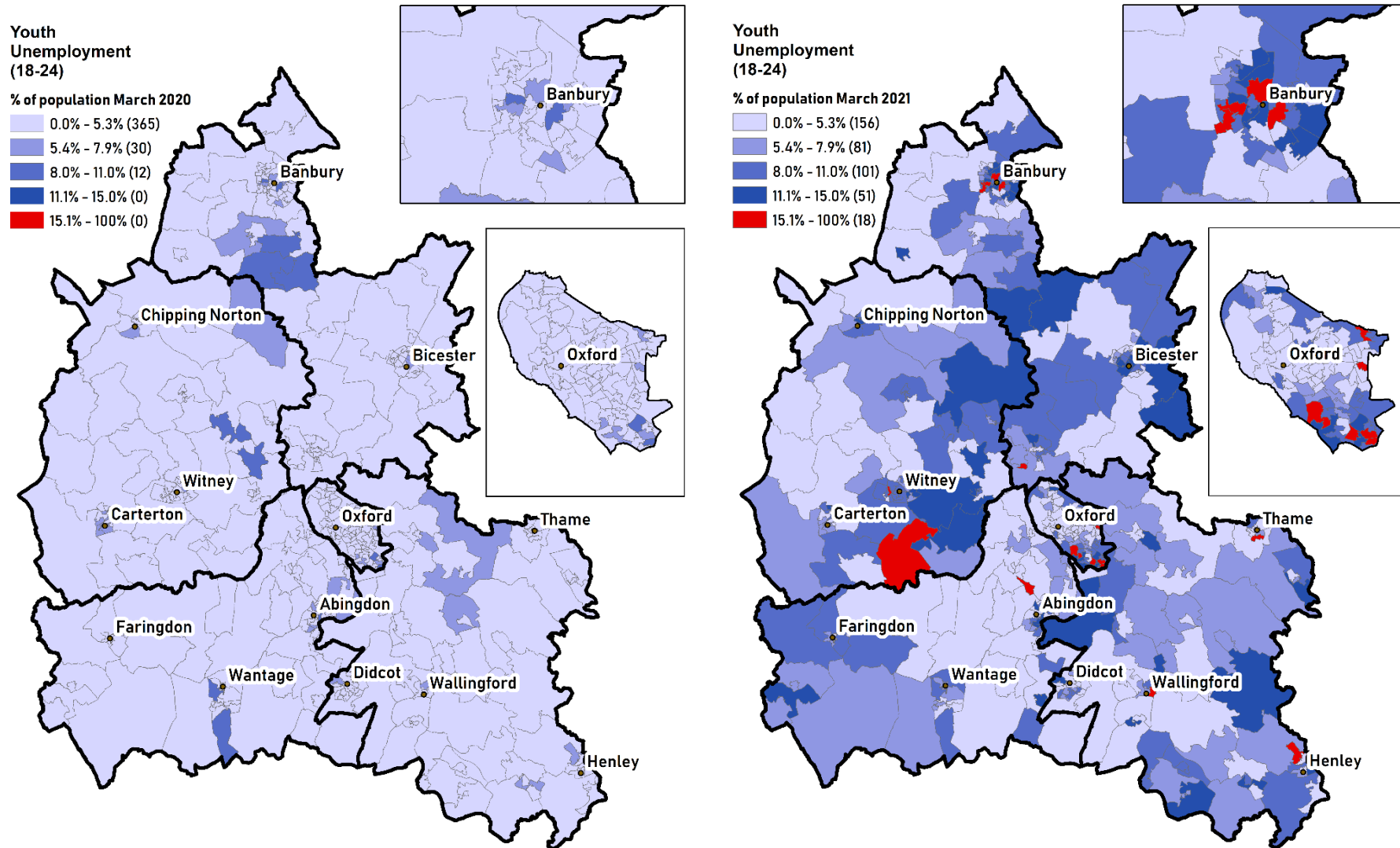
This month's chart shows the proportion of people aged 18–24 years claiming Jobseekers Allowance (JSA) or Universal Credit (UC) as percentage of all 18–24 years old. Unemployment claims in the young segment of the population (18–24) have increased significantly over the last 12 months in Oxfordshire. In March 2021 the number of claims had increased by 3,255 (+254%) compared to March 2020. This becomes more apparent when looking at each district separately. In the rural district of Cherwell, the number of 18–24-year-olds claiming unemployment benefits has increased by 324% (+615 claims), the highest in Oxfordshire. Vale of White Horse on the other hand, has the lowest increase in claims compared to the rest of the districts, with an increase of 200% (+300 claims).

Key findings:

Looking at the March 2021 figures we can see that:

- Cherwell has the second highest number of young unemployment claims in the county with 805. Areas with the highest rates as a percentage of the population aged 18–24 years are located in Cherwell 019D, Cherwell 005B and Cherwell 003B LSOAs (Lower-layer Super Output Areas).
- Oxford city has the highest number of young unemployment claims from all districts with a total of 900. Areas with the highest rates of unemployment claims as a percentage of the population aged 18–24 years are located in Oxford 018C, Oxford 016E and Oxford 005A LSOAs.
- South Oxfordshire is above Vale of White Horse and West Oxfordshire with a total of 555 claims. Areas with the highest rates of unemployment claims as a percentage of the population aged 18–24 years are located in South Oxfordshire 016B, South Oxfordshire 003D and South Oxfordshire 012F LSOAs.
- Vale of White Horse is the district with the second lowest number of young unemployment claims, a total of 510. Areas with the highest rates of unemployment claims as a percentage of the population aged 18–24 years are located in Vale of White Horse 003E, Vale of White Horse 006C and Vale of White Horse 008C.
- West Oxfordshire has the lowest number of young unemployment claims in Oxfordshire with 485. Areas with the highest rates as a percentage of the population aged 18–24 years are located in West Oxfordshire 015C, West Oxfordshire 009A and West Oxfordshire 011C LSOAs.

Figure 1. Youth unemployment as a percentage of the 18-24 population (March 2020 vs March 2021) – Showing all LSOAs



Source: ONS – Claimant count by sex and age – [Available at Nomis](#)

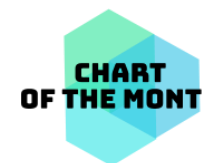
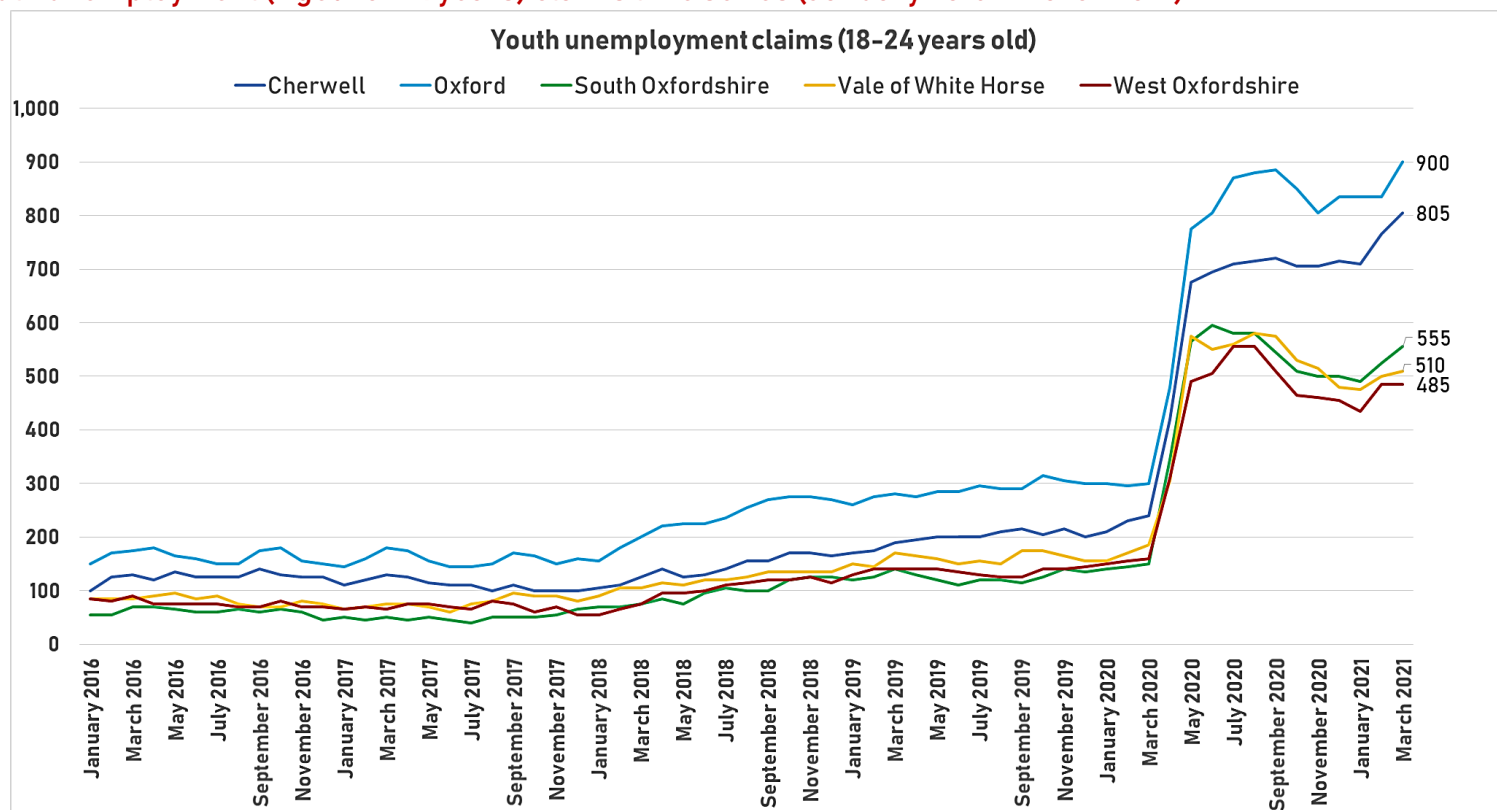
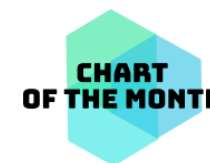


Figure 2. Youth unemployment (Aged 18-24 years) claims time series (January 2016 – March 2021)



District	March 2019	March 2021	Change (#)	Change (%)
Cherwell	190	805	+615	+324%
Oxford	280	900	+620	+221%
South Oxfordshire	140	555	+415	+296%
Vale of White Horse	170	510	+340	+200%
West Oxfordshire	140	485	+345	+246%
Oxfordshire	920	3,255	+2,335	+254%

Source: ONS – Claimant count by sex and age – [Available at Nomis](#)



References:

Source:

Claimant count by sex and age – [Available at Nomis](#)

Data note prepared by:

Carlos Barrero

District Data Analysis Service

cbarrero@oxford.gov.uk

07483 010435

On behalf of:

Cherwell District Council

Oxford City Council

South Oxfordshire District Council

Vale of White Horse District Council

West Oxfordshire District Council

Data notes and briefings from this service are available at [District Data Service website](#).