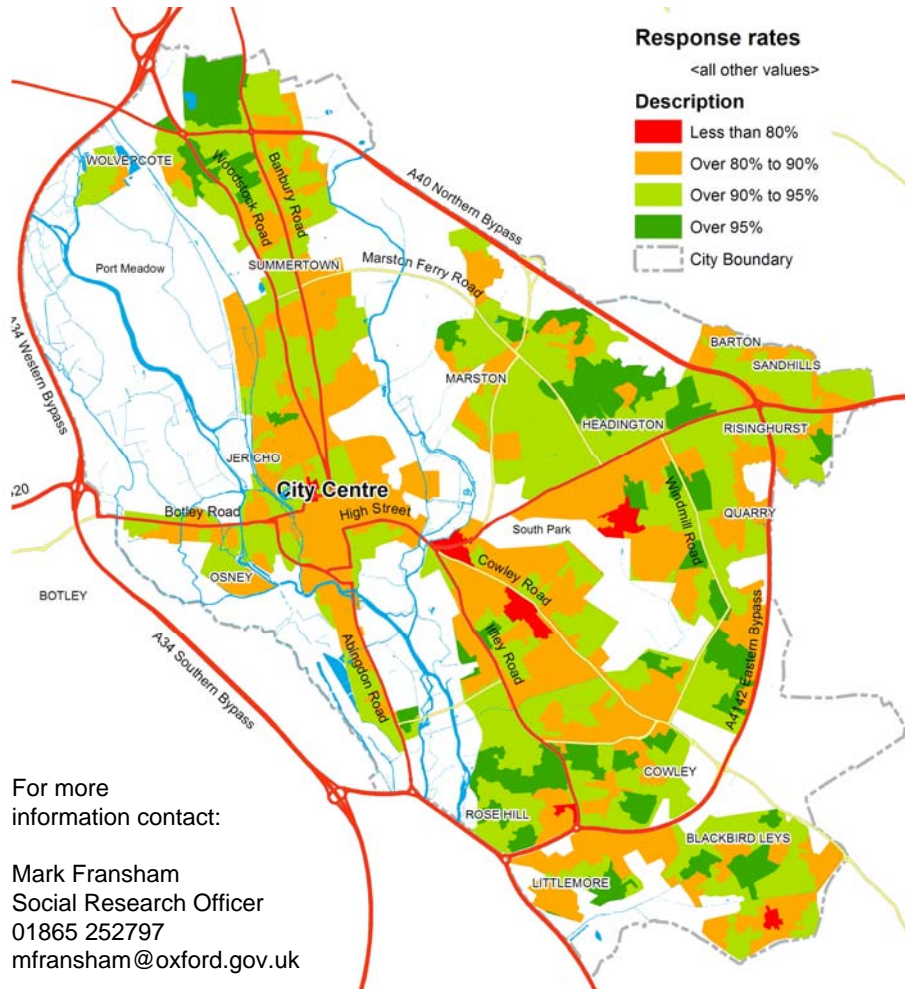


Census 2011 – it's only just begun

www.oxford.gov.uk



2011 Census response rates



Census day was on March 27th, and in order to maximise the response Census staff have since been following up households who have not returned their questionnaire. The response rate varies widely by area and demographic group - the chart to the left shows response rates by area for the 2011 Census (overall it was 90% in Oxford, 94% in England and Wales).

However, the follow-up done by Census field staff is just the start of the work carried out to ensure that the Census is as accurate as possible. The Office for National Statistics (ONS) has also been conducting a Census Coverage Survey to recount the population in a small sample of areas. This capture-recapture method is commonly used to count animal populations in the wild. This allows ONS to estimate the number of people who did not fill out a Census form and therefore account for them in the final published Census estimates.

Following the adjustment made by the Census Coverage Survey the estimates will be compared to other available data sources - such as children receiving child benefit, pensioners, university student enrolments and households paying council tax (the latter provided by the city council). A number of demographic checks will also be made such as comparing the number of men to women.

It is not until all these adjustments and checks are conducted that the 2011 Census will be published - which is why we'll be waiting until next year to see the results.

For more information contact:

Mark Fransham
Social Research Officer
01865 252797
mfransham@oxford.gov.uk

www.oxford.gov.uk/oxfordstats
www.oxfordshireobservatory.info

More information about quality assurance for the 2011 Census is available at <http://www.ons.gov.uk/census/2011-census/process-info/data-quality-assurance>

Published May 2011

© Crown Copyright and database right 2011.
Ordnance Survey 100019348. Data source:
Census 2011, Office for National Statistics