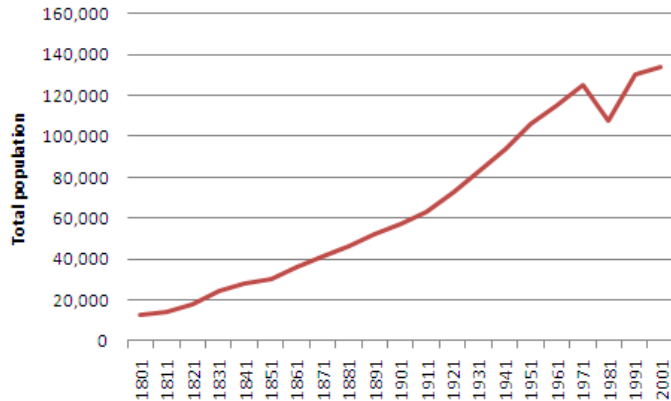


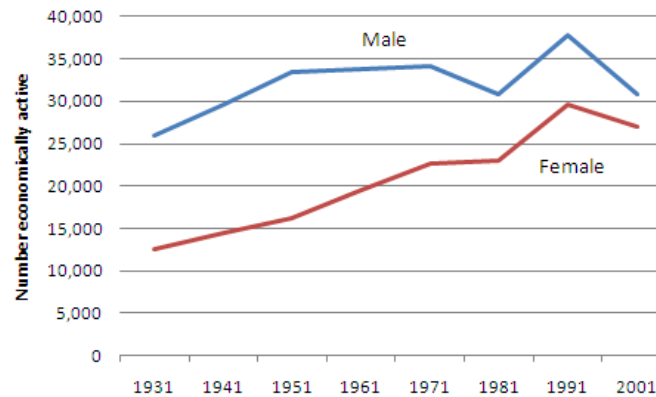
Two hundred years of the Census in Oxford

Census day was Sunday March 27th – have you filled out your form yet? The results will not be made available until 2012, but in the meantime we can see what we've learnt from the censuses which have taken place since 1801. On a Portsmouth University website, *A Vision of Britain Through Time*, we can access data about Oxford's population since 1801. The historical data shown here has been adjusted so that it refers to the modern boundary of Oxford city.

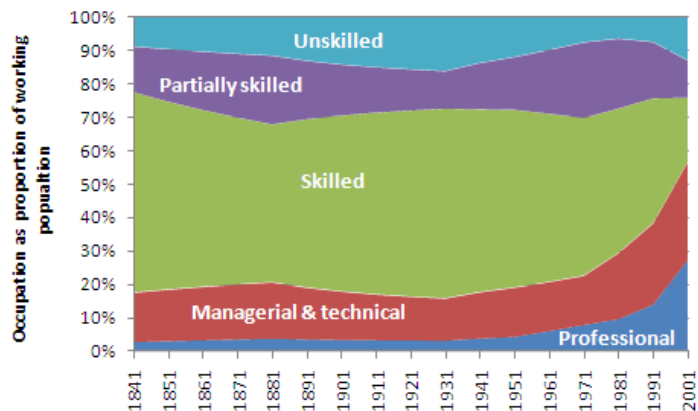
Population growth accelerated as a result of urbanisation in the interwar and postwar periods



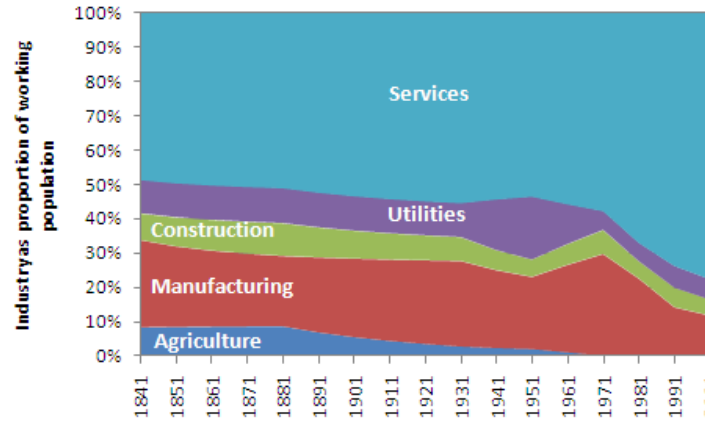
In 1931 only half as many women as men were in work or seeking it; in 2001 numbers were almost equal



People working in professional occupations increased markedly in the second half of the twentieth century



Employment in services has increased from 50% in 1841 to 78% in 2001



For more information contact:
Mark Fransham
Social Research Officer
01865 252797

mfransham@oxford.gov.uk
www.oxford.gov.uk/oxfordstats
www.oxfordshireobservatory.info
Published March 2011

Data source:
A Vision of Britain Through Time
<http://tinyurl.com/494e6ym>

www.oxford.gov.uk



OXFORD
CITY
COUNCIL

