



# **Oxfordshire**

## **Population and household forecasts, 2009**

Revised September 2009



**OXFORDSHIRE  
COUNTY COUNCIL**

[www.oxfordshire.gov.uk](http://www.oxfordshire.gov.uk)

Contact for this report:

Inga Doherty  
(Demography & Monitoring)

Policy Unit  
Oxfordshire County Council  
County Hall  
New Road  
OXFORD OX1 1ND

email: [inga.doherty@oxfordshire.gov.uk](mailto:inga.doherty@oxfordshire.gov.uk)  
tel. 01865 815041

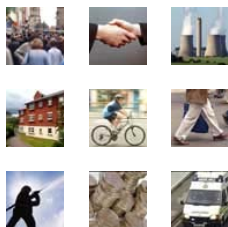
Population model and analysis by:

Data Management and Analysis Group, Greater London Authority

For other data and information on Oxfordshire visit the

**OXFORDSHIRE DATA OBSERVATORY** at

[www.oxfordshireobservatory.info](http://www.oxfordshireobservatory.info)



## CONTENTS

<b>1</b>	<b>Introduction .....</b>	<b>5</b>
<b>2</b>	<b>Methodology.....</b>	<b>5</b>
<b>3</b>	<b>Population and household forecasts to 2016 .....</b>	<b>6</b>
3.1	Population change 2001 to 2016 .....	6
3.2	Changes in age structure of the population .....	9
3.3	Economically active population .....	10
3.4	Household forecasts .....	10
3.5	Household composition.....	11
3.6	Population and household change by town and ward to 2016.....	12
<b>4</b>	<b>Population forecasts to 2026 .....</b>	<b>12</b>
4.1	Overall population change, 2006 to 2026 .....	12
4.2	Changes in population structure, 2006 to 2026.....	13
4.2.1	Changes in district populations, 2006 to 2026 .....	14
4.3	Changes in household size, 2006 to 2026 .....	15
4.4	Summary of population and household forecasts, 2001 to 2026 .....	15
<b>5</b>	<b>Appendix 1 Population forecasts for market towns and wards, 2001 to 2016.....</b>	<b>17</b>
<b>6</b>	<b>Appendix 2 Housing data for the OCC ward level population forecasts.....</b>	<b>24</b>

Table 3-1:	Forecast population change by District 2001 to 2016 .....	6
Table 3-2:	High growth wards .....	7
Table 3-3:	Oxfordshire population change by broad age band, 2001 to 2016 .....	9
Table 3-4:	Economically active population by District, 2001 to 2016 .....	10
Table 3-5:	Forecast number of households by district, 2001 to 2016.....	10
Table 3-6:	Household composition in Oxfordshire, 2001 to 2016 .....	11
Table 4-1	Oxfordshire population to 2026.....	12
Table 4-2	Assumed housing growth used in the population forecasts .....	13
Table 4-3	Oxfordshire population change by broad age band, 2006 to 2026 .....	13
Table 4-4	Average household size, 2006 to 2026.....	15
Table 4-5	Summary of population and household forecasts, 2001 to 2026 .....	15
Table 4-6	Summary of population and household forecasts, 2001 to 2026 (districts).....	16
Table 5-1	Population forecasts by market town .....	17
Table 5-2:	Cherwell wards population and household change, 2001 to 2016.....	18
Table 5-3:	Oxford wards population and household change, 2001 to 2016 .....	19
Table 5-4:	South Oxfordshire wards population and household change, 2001 to 2016 .....	20
Table 5-5:	Vale of White Horse wards population and household change, 2001 to 2016 (option 1: development in Abingdon) .....	21
Table 5-6:	Vale of White Horse wards population and household change, 2001 to 2016 (option 2: development in Wantage) .....	22
Table 5-7:	West Oxfordshire wards population and household change, 2001 to 2016 .....	23

## 1 Introduction

This document summarises and presents the results of the 2009 revision of the Oxfordshire population and household forecasts. These forecasts update those published in October 2008.

The main purpose of the Oxfordshire forecasts is to give an estimate of population and household growth based on planned changes in housing. The first part of the report presents the district ward population forecasts to 2016. The second part, presents population forecasts to 2026 for the districts based on the housing growth recommended in the South East Plan (published June 2009).

In addition to the information summarised in this report, further data tables in excel format can be downloaded from the Oxfordshire Data Observatory website ([www.oxfordshireobservatory.info](http://www.oxfordshireobservatory.info), follow links to the 'Population' theme). These include:

- Ward population and households by year, 2001 to 2016
- District populations by single year of age and year, 2001 to 2016
- District populations to 2026

**NOTE: This report corrects data presented in the publication originally issued August 2009.**

## 2 Methodology

The forecasts have been produced by the demography team at the Greater London Authority using their small area model. The model generates forecasts of total resident population<sup>1</sup> and households by county, district and ward.

Population and household data from the Census 2001 is used as the base for the model. Population and household change since 2001 is modelled using the following data inputs:

- population trends based on Office for National Statistics (ONS) mid year estimates 1991 to 2000 and 2002 to 2007<sup>2</sup>.
- actual births by ward (2001 to 2007) and ONS 2006-based fertility rate projection for England (2006-07 – 2030-31)
- annual deaths, 2001 to 2007 (ONS) and ONS 2006-based deaths and survival rates for England 2006 to 2031
- actual and planned housing development by ward provided by District planners, 2001 to 2016 (the development data is shown in Appendix 1)<sup>3</sup>

---

<sup>1</sup> Includes private households and population living in communal establishments (student accommodation, nursing homes, military accommodation)

<sup>2</sup> This population model uses the ONS mid year estimates to establish trends, but the resulting population data is not aligned with the ONS mid-year estimates. Instead, the total population growth is constrained by the available household spaces (determined by the actual and planned housing growth statistics provided for this model)

<sup>3</sup> The sites and timing of the developments used in these forecasts are subject to continual review through the planning process. Changes in the data are reflected in the annual updates of the Oxfordshire forecasts.

- total housing development to 2026 as indicated in the SE Plan, 2009
- Communities and Local Government 2006-based household projections (including average household size and marital status).

Full details of the model methodology can be downloaded from the Oxfordshire Data Observatory website at [www.oxfordshireobservatory.info](http://www.oxfordshireobservatory.info) (follow links to the 'Population' theme), or by contacting the Oxfordshire Data Observatory team (email: [oxfordshireobservatory@oxfordshire.gov.uk](mailto:oxfordshireobservatory@oxfordshire.gov.uk) or tel: 01865 815843).

### 3 Population and household forecasts to 2016

#### 3.1 Population change 2001 to 2016

The population of Oxfordshire county increased by 1.5% from 2001 to 2006 and is projected to increase by more than 50,000 people, or 8.3%, from 2006 to 2016.

All Oxfordshire Districts are expected to grow in population between 2006 and 2016, with Oxford City forecast to experience the highest percentage growth (9.3%) and Cherwell the lowest (7.1%).

**Table 3-1: Forecast population change by District 2001 to 2016**

	2001	2006	2011	2016	change 2001 to 2006		change 2006 to 2016	
<b>Oxfordshire</b>	607,277	616,409	639,150	667,730	9,132	1.5%	51,321	8.3%
<b>Cherwell</b>	131,988	132,183	135,603	141,535	195	0.2%	9,352	7.1%
<b>Oxford</b>	135,509	140,398	147,120	153,408	4,889	3.6%	13,010	9.3%
<b>South Oxfordshire</b>	128,307	126,409	129,330	137,602	-1,898	-1.5%	11,193	8.9%
<b>Vale of White Horse</b>	115,772	117,407	121,287	127,492	1,635	1.4%	10,085	8.6%
<b>West Oxfordshire</b>	95,701	100,013	105,811	107,693	4,312	4.5%	7,680	7.7%

The wards which are predicted to undergo the greatest percentage increases in population from 2001 to 2016 are shown in Table 2.

Not all areas of the county are forecast to experience population growth, with a decrease in population forecast for a number of the rural wards. Population change by ward is shown in Figure 1.

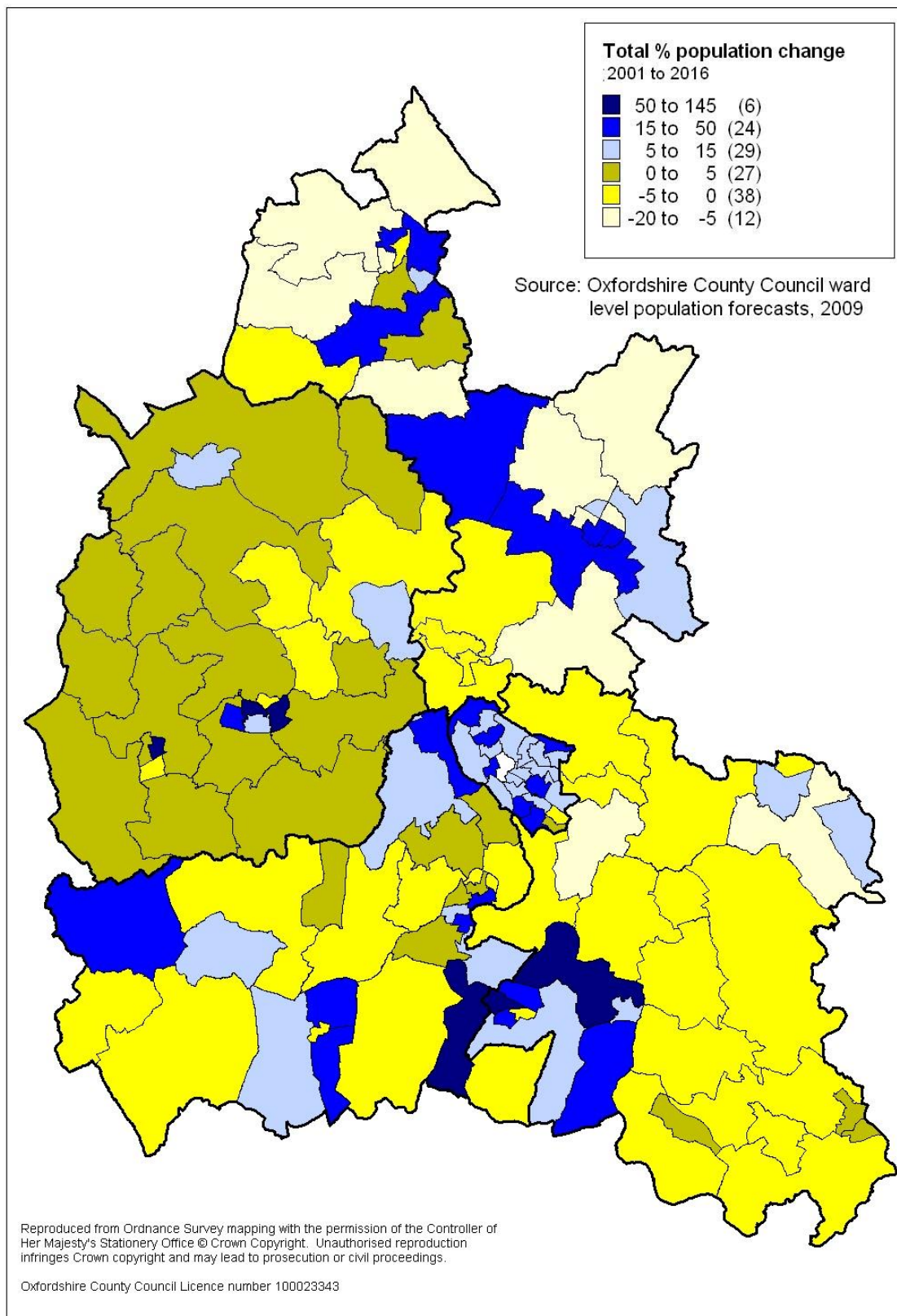
**Table 3-2: High growth wards**

<b>District</b>	<b>Ward</b>	<b>% growth in population 2001 to 2016</b>
<b>Cherwell</b>	Bicester South	+44.4%
	Ambrosden and Chesterton	+40.7%
	Banbury Hardwick	+33.8%
<b>Oxford City</b>	Barton and Sandhills	+45.7%
	Cowley Marsh	+26.4%
	Carfax (and Holywell)	+24.4%
<b>South Oxfordshire*</b>	Didcot All Saints	+63.6%
	Didcot Ladygrove	+18.2%
	Didcot Park	+17.7%
<b>Vale of White Horse**</b>	Harwell	+57.2%
	Grove	+29.8%
	Abingdon Abbey and Barton	+26.1%
<b>West Oxfordshire</b>	Carterton North East	+144.3%
	Witney Central	+59.4%
	Witney East	+51.2%

\*The South Oxfordshire district council preferred options paper includes a new development site in NE Didcot. This site may be located in Didcot Ladygrove and Brightwell wards. If this site is included into the population forecasts (with housing shared equally between the wards), then high growth wards for South Oxfordshire would be: Brightwell, 65.4%, Didcot All Saints, 63.3% and Didcot Ladygrove, 40.2%.

\*\*The Vale of White Horse district council preferred options paper indicates two possible development locations in Abingdon or Wantage/Grove. Some of this development may start before 2016, in which case the population of Wantage Charlton ward would increase by 35% to 2016 if this were selected as the preferred location for the development.

Figure 1 Percentage population change by ward, 2001 to 2016



### 3.2 Changes in age structure of the population

The greatest percentage increase in the population between 2006 and 2016 occurs in the older age groups, with the numbers of 45-64 year olds increasing by 16.5% and the over 65s by 24.8%. This reflects the ageing of the relatively large cohorts which were aged 30-39 and 50-54 in 2001. The number of very elderly (85+) may increase by 35.6% county-wide (ranging from an increase of over 50% in West Oxfordshire to 19% in Oxford).

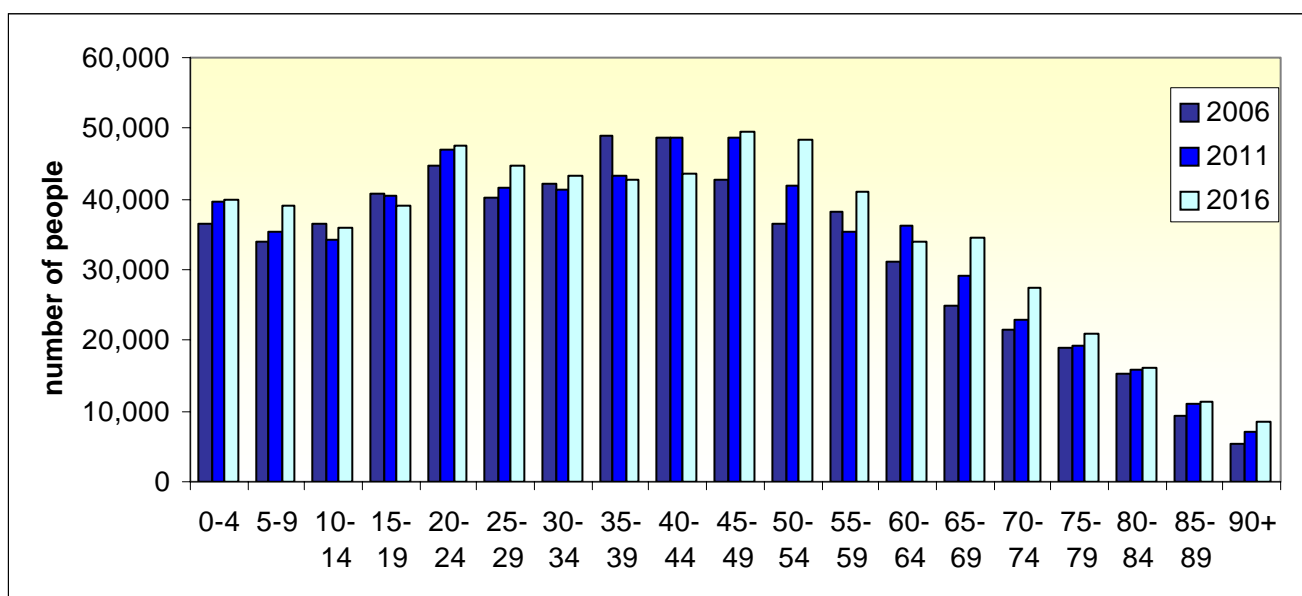
The number of children under ten years is forecast to increase county-wide by 11.8% over the same period. The change in this age group varies widely with district with the greatest increase forecast in Oxford (27.6%), the least in South Oxfordshire (4.0%) and Cherwell (4.8%).

**Table 3-3: Oxfordshire population change by broad age band, 2001 to 2016**

	2001	2006	2011	2016	change		change	
					2001 to 2006	2006 to 2016	2001 to 2006	2006 to 2016
<b>Aged 0 to 9</b>	73,280	70,527	75,018	78,835	-2,753	-3.8%	8,308	11.8%
<b>Aged 10 to 14</b>	37,816	36,579	34,363	35,956	-1,237	-3.3%	-623	-1.7%
<b>Aged 15 to 24</b>	82,482	85,615	87,618	86,450	3,133	3.8%	835	1.0%
<b>Aged 25 to 44</b>	184,631	179,694	174,850	174,264	-4,937	-2.7%	-5,430	-3.0%
<b>Aged 45 to 64</b>	140,955	148,608	161,925	173,145	7,653	5.4%	24,538	16.5%
<b>Aged 65 and over</b>	88,113	95,386	105,377	119,080	7,273	8.3%	23,694	24.8%
<b>Total</b>	<b>607,277</b>	<b>616,409</b>	<b>639,150</b>	<b>667,730</b>	<b>9,132</b>	<b>1.5%</b>	<b>51,322</b>	<b>8.3%</b>
<b>Aged 85 and over</b>	11,339	14,801	18,130	20,069	3,462	30.5%	5,268	35.6%

NOTE: Some totals may vary slightly due to rounding

**Figure 2 Oxfordshire population 2006 to 2016 by five year age groups**



### 3.3 Economically active population

Forecasts of the resident labour force (the economically active population) have been modelled for the Oxfordshire districts from the district population forecasts. Economic activity rates by age group and gender from the Census 2001 were used as a base for the forecast. Projected economic activity rates were inferred from trends in the UK activity rates projection published by the ONS in 2006. The projected rates were then applied to each relevant age group by district to create the labour force projection.

The economically active population in Oxfordshire is projected to increase by almost 9% from 2001 to 2016, with the fastest growth in Oxford (21%) and growth of between 5 and 6% in the other districts.

**Table 3-4: Economically active population by District, 2001 to 2016**

	2001	2006	2011	2016	change 2001 to 2016	
<b>Oxfordshire</b>	318,012	321,795	332,705	345,730	27,718	8.7
<b>Cherwell</b>	72,302	72,027	73,520	76,271	3,969	5.5
<b>Oxford</b>	64,275	69,321	74,009	77,773	13,498	21.0
<b>South Oxfordshire</b>	68,469	66,447	67,662	71,945	3,476	5.1
<b>Vale of White Horse</b>	61,339	61,106	62,310	65,102	3,763	6.1
<b>West Oxfordshire</b>	51,628	52,894	55,203	54,639	3,011	5.8

### 3.4 Household forecasts

The number of households in the county is expected to grow at a faster rate than the population, with an increase of almost 43,000 households, or 17.5%, from 2001 to 2016. This reflects the projected decrease in the average household size in the county, from 2.41 in 2001 to 2.26 in 2016.

**Table 3-5: Forecast number of households by district, 2001 to 2016**

	2001	2006	2011	2016	2001 to 2016 change	
<b>Oxfordshire</b>	241,499	252,976	266,471	283,781	42,282	17.5%
<b>Cherwell</b>	53,370	55,988	59,096	63,508	10,138	19.0%
<b>Oxford</b>	51,621	54,543	57,674	61,100	9,479	18.4%
<b>South Oxfordshire</b>	52,148	53,320	55,454	60,203	8,055	15.4%
<b>Vale of White Horse</b>	45,824	47,826	49,894	53,308	7,484	16.3%
<b>West Oxfordshire</b>	38,536	41,299	44,353	45,662	7,126	18.5%

### 3.5 Household composition

Married couples form the largest group of households in Oxfordshire, although the total number is forecast to decrease from 2001 to 2016 in line with national trends. In contrast, the number of cohabiting couple households is seen to increase by 65% over the same period.

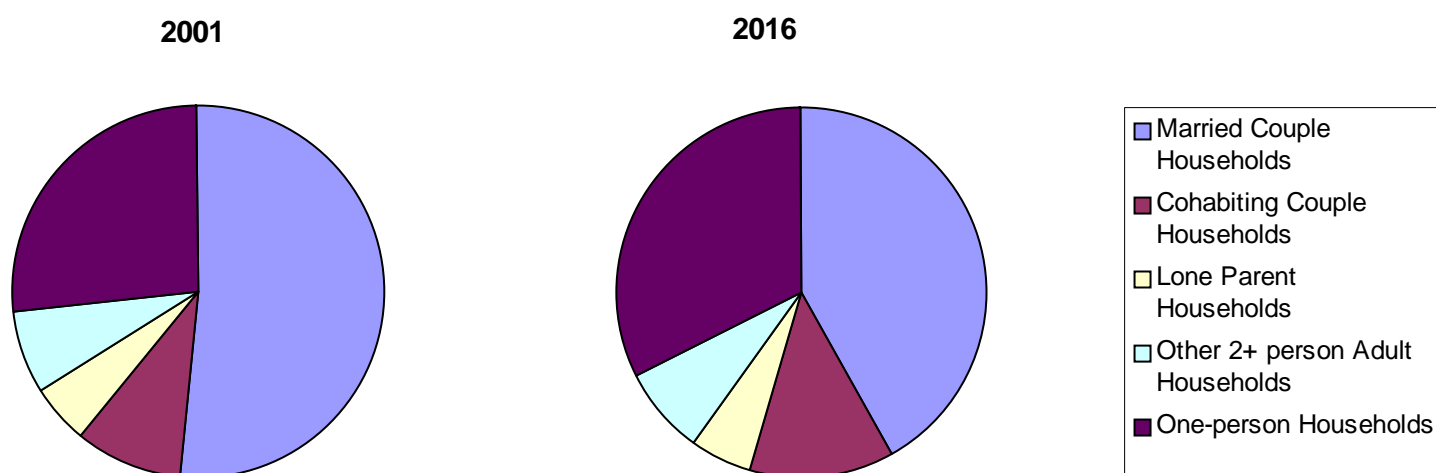
Single person households form the second largest group of households. This group is projected to increase by over 40% from 2001 to 2016.

**Table 3-6: Household composition in Oxfordshire, 2001 to 2016**

	2001	2006	2011	2016	2001 to 2016 change	
<b>Married Couple Households</b>	124,388	120,910	118,581	118,637	-5,751	-4.6%
<b>Cohabiting Couple Households</b>	21,782	26,498	31,216	35,933	14,151	65.0%
<b>Lone Parent Households</b>	12,552	13,897	14,399	14,992	2,440	19.4%
<b>Other 2+ person Adult Households</b>	17,527	18,361	20,239	22,254	4,726	27.0%
<b>One-person Households</b>	65,249	73,310	82,037	91,966	26,716	40.9%
<b>Total Households</b>	241,499	252,976	266,471	283,781	42,282	17.5%
<b>Private Household Population</b>	583,004	591,506	613,730	641,986	58,982	10.1%
<b>Communal Establishment Population</b>	24,273	24,902	25,420	25,744	1,472	6.1%
<b>Average Household Size</b>	2.41	2.34	2.30	2.26	-	-
<b>Total Population</b>	607,277	616,409	639,150	667,730	60,453	10.0%

NOTE: Some totals may vary slightly due to rounding

**Figure 3 Change in household composition, 2001 to 2016**



### 3.6 Population and household change by town and ward to 2016

Population and household changes by market town and ward are given in Appendix 1. Further data and details of the methodology used to produce the population forecasts are available on the Oxfordshire Data Observatory website ([www.oxfordshireobservatory.info](http://www.oxfordshireobservatory.info), follow the links to data/themes/population/population projections). Alternatively, contact us by telephone: 01856 815843 or email [oxfordshireobservatory@oxfordshire.go.uk](mailto:oxfordshireobservatory@oxfordshire.go.uk).

## 4 Population forecasts to 2026

The South East Plan (published in June 2009) recommends that more than 55,000 houses be built in Oxfordshire from 2006 to 2026. This section summarises the possible changes to Oxfordshire's population over this time if the number of houses proposed in the SE Plan is realised.

### 4.1 Overall population change, 2006 to 2026

Based on the housing growth recommended in the SE Plan, the total resident population<sup>4</sup> in each of the Oxfordshire districts is forecast to increase by over 12% (see Table 13) from 2006 to 2026.

**Table 4-1 Oxfordshire population to 2026**

	2006	2011	2016	2021	2026	% change 2006-2026
Cherwell	132,183	135,603	141,535	145,284	148,189	12.1
Oxford	140,398	147,120	153,408	155,310	156,993	11.8
South Oxfordshire (+ Oxford SDA)**	126,409	129,330	137,602	145,860	151,078	19.5
<i>South Oxfordshire (- Oxford SDA)</i>	<i>126,409</i>	<i>129,330</i>	<i>137,602</i>	<i>141,613</i>	<i>142,678</i>	<i>12.9</i>
Vale of White Horse	117,407	121,287	127,492	134,038	139,147	18.5
West Oxfordshire	100,013	105,811	107,693	110,542	113,609	13.6
Oxfordshire (+ Oxford SDA)	616,409	639,150	667,730	691,034	709,016	15.0
<i>Oxfordshire (- Oxford SDA)</i>	<i>616,409</i>	<i>639,150</i>	<i>667,730</i>	<i>686,787</i>	<i>700,616</i>	<i>13.7</i>

\*\*Two projections have been generated for South Oxfordshire (and therefore for Oxfordshire county), one to include 4,000 homes proposed for the Oxford Strategic Development Area (SDA) and one without.

<sup>4</sup> Includes private households and population living in communal establishments (student accommodation, nursing homes, military accommodation)

**Table 4-2 Assumed housing growth used in the population forecasts**

	2006-2011	2012-2016	2017-2021	2022-2026	total
Cherwell	2,777	4,412	3,367	2,844*	13,400
Oxford	3,131	3,426	1,175	1,050	8,782
South Oxfordshire (+ Oxford SDA)	2,134	4,749	4,850	3,320	15,053
South Oxfordshire (- Oxford SDA)	2,134	4,749	2,850	1,320	11,053
Vale	1,910	3,414	3,644	3,020	11,988
West Oxfordshire	3,054	1,309	1,556	1,381	7,300

Source: District Council housing trajectories, Strategic Housing Land Availability Assessments, District Council Core Strategies and preferred option documents

\*This figure includes any housing built before 2026 as part of the Northwest Bicester Ecotown<sup>5</sup>

#### 4.2 Changes in population structure, 2006 to 2026

The population structure of Oxfordshire county is expected to age during the period from 2006 to 2026, with the numbers of people of pension age forecast to make up 23% of the population in 2026 compared with 18% in 2006. The proportion of working age population will decrease from 63% of the population in 2006 to 59% in 2026, whilst the proportion of 0-15 year olds will remain relatively unchanged at around 18%.

**Table 4-3 Oxfordshire population change by broad age band, 2006 to 2026**

					% of population	
	2006	2016	2026	% change 2006 to 2026	2006	2026
0-15 years	114,929	121,683	126,265	9.9	18.64	18.02
16-64M/ 16-59 F	390,283	409,814	413,899	6.1	63.32	59.08
65+M/ 60+F	111,197	136,233	160,452	44.3	18.04	22.90
Over 85s	14,801	20,069	22,546	52.3	2.40	3.22
<b>Total population</b>	<b>616,409</b>	<b>667,730</b>	<b>700,616</b>	<b>13.7</b>		

<sup>5</sup> Cherwell District Council statement, 16 July, 'Making NW Bicester a reality'

### 4.2.1 Changes in district populations, 2006 to 2026

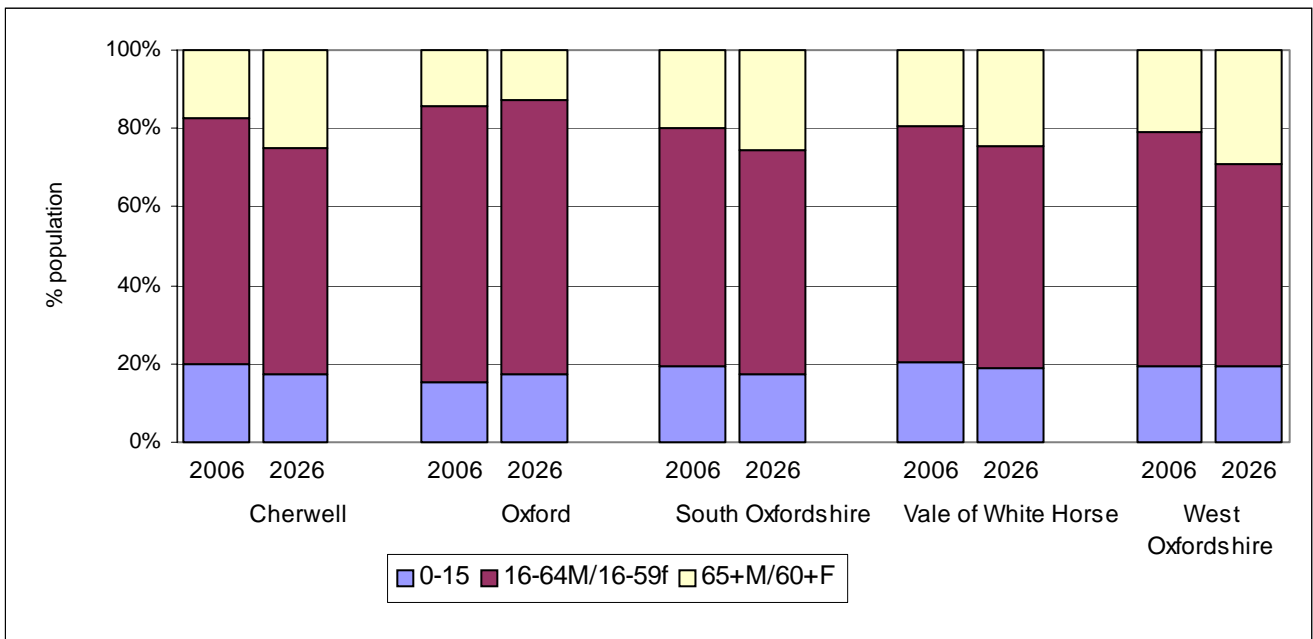
Oxford City has a younger age profile than the other districts. From 2006 to 2026 the number of 0-15 year olds is likely to increase by 27% whilst the number of people of pension age is forecast to decrease by 1%.

In all other districts the population is ageing, with significant increases in the numbers of older people. This is particularly noticeable in Cherwell and West Oxfordshire districts, where the over 60/65s are forecast to increase by 62% and 59%, respectively.

The number of very elderly (85+) is forecast to increase significantly in all districts except Oxford (by around 58% in Cherwell, South Oxfordshire and Vale of White Horse and 83% in West Oxfordshire).

The working age population is forecast to increase in the Vale of White Horse by 11% and in South Oxfordshire by 5%. In Cherwell this increase is forecast to be less than 3%, whilst in West Oxfordshire it is forecast to fall by 2%.

**Figure 4 Population profile by district, 2006 and 2026**



### 4.3 Changes in household size, 2006 to 2026

The trend towards smaller average household size in Oxfordshire seen from 2006 to 2016 is forecast to continue, falling from 2.26 in 2016 to 2.20 in 2026. Similar trends are expected for all districts.

**Table 4-4 Average household size, 2006 to 2026**

	2006	2011	2016	2021	2026
Cherwell	2.31	2.25	2.19	2.13	2.08
Oxford	2.32	2.31	2.28	2.27	2.26
South Oxfordshire	2.32	2.28	2.24	2.20	2.17
Vale of White Horse	2.39	2.36	2.33	2.29	2.26
West Oxfordshire	2.37	2.33	2.30	2.29	2.28
Oxfordshire	2.34	2.30	2.26	2.23	2.20

Source: Department for Communities and Local Government, 2006-based household projections

### 4.4 Summary of population and household forecasts, 2001 to 2026

**Table 4-5 Summary of population and household forecasts, 2001 to 2026**

		Total Population	Economically Active Population	Communal Population	Private Household Population	Households	Average Household Size
<b>Oxfordshire</b>	<b>2001</b>	607,277	318,012	24,273	583,004	241,499	2.41
	<b>2006</b>	616,409	321,795	24,902	591,506	252,976	2.34
	<b>2011</b>	639,150	332,705	25,420	613,730	266,471	2.30
	<b>2016</b>	667,730	345,730	25,744	641,986	283,781	2.26
	<b>2021</b>	686,787	351,180	26,039	660,749	296,329	2.23
	<b>2026</b>	700,616	351,819	26,485	674,131	305,988	2.20

**Table 4-6 Summary of population and household forecasts, 2001 to 2026 (districts)**

		Total Population	Economically Active Population	Communal Population	Private Household Population	Households	Average Household Size
Cherwell	2001	131,988	72,302	2,445	129,543	53,370	2.43
	2006	132,183	72,027	2,584	129,598	55,988	2.32
	2011	135,603	73,520	2,692	132,911	59,096	2.25
	2016	141,535	76,271	2,769	138,766	63,508	2.19
	2021	145,284	77,143	2,825	142,459	66,875	2.13
	2026	148,189	76,908	2,935	145,253	69,719	2.08
Oxford	2001	135,509	64,275	14,021	121,488	51,621	2.35
	2006	140,398	69,321	14,087	126,311	54,543	2.32
	2011	147,120	74,009	14,131	132,989	57,674	2.31
	2016	153,408	77,773	14,121	139,287	61,100	2.28
	2021	155,310	78,811	14,086	141,224	62,275	2.27
	2026	156,993	79,542	14,063	142,930	63,325	2.26
South Oxfordshire	2001	128,307	68,469	2,624	125,683	52,148	2.41
	2006	126,409	66,447	2,753	123,656	53,320	2.32
	2011	129,330	67,662	2,860	126,470	55,454	2.28
	2016	137,602	71,945	2,940	134,662	60,203	2.24
	2021	141,613	73,356	3,034	138,579	63,053	2.20
	2026	142,678	72,338	3,150	139,528	64,373	2.17
Vale of White Horse	2001	115,772	61,339	3,167	112,605	45,824	2.46
	2006	117,407	61,106	3,293	114,114	47,826	2.39
	2011	121,287	62,310	3,385	117,902	49,894	2.36
	2016	127,492	65,102	3,447	124,045	53,308	2.33
	2021	134,038	67,801	3,519	130,519	56,952	2.29
	2026	139,147	69,542	3,608	135,539	59,972	2.26
West Oxfordshire	2001	95,701	51,628	2,016	93,685	38,536	2.43
	2006	100,013	52,894	2,185	97,827	41,299	2.37
	2011	105,811	55,203	2,352	103,459	44,353	2.33
	2016	107,693	54,639	2,468	105,225	45,662	2.30
	2021	110,542	54,069	2,574	107,968	47,174	2.29
	2026	113,609	53,489	2,728	110,881	48,599	2.28

## 5 Appendix 1 Population forecasts for market towns and wards, 2001 to 2016

**Table 5-1 Population forecasts by market town**

	All persons				
	2001	2006	2011	2016	% change 2001-2016
<b>Cherwell</b>	131,988	132,183	135,603	141,535	7.2
Banbury	41,863	43,539	45,063	45,675	9.1
Bicester	28,705	30,042	30,571	31,916	11.2
Kidlington	13,744	13,397	13,377	13,352	- 2.9
<b>Oxford City</b>	135,509	140,398	147,120	153,408	13.2
<b>South Oxfordshire</b>	128,307	126,409	129,330	137,602	7.2
Didcot	23,468	23,095	23,618	30,583	30.3
Henley	10,631	10,469	11,094	10,909	2.6
Thame	11,075	10,882	11,447	11,244	1.5
<b>Vale of White Horse</b>	115,772	117,407	121,287	127,492	10.1
Abingdon *	31,329	31,998	33,340	33,775	7.8
				33,183	5.9
Wantage *	10,511	10,956	11,969	12,043	14.6
				12,601	19.9
<b>West Oxfordshire</b>	95,701	100,013	105,811	107,693	12.5
Carterton	11,791	13,906	15,765	16,189	37.3
Witney	22,764	24,936	27,662	28,716	26.1

\*Two figures are shown for Abingdon and Wantage for 2016. The Vale of White Horse Core Strategy Preferred Options paper indicates two potential locations for a development of 1,500 homes, either south west of Abingdon or north east of Wantage. A proportion of this development may begin before 2016, and has been incorporated into the 2009 population forecasts (based on 250 homes in either Abingdon or Wantage during 2011 to 2016). Two figures are shown for Abingdon and Wantage in 2016: the higher figure shows the population if the development were to be located in either of these locations, the lower figure shows the population without the development.

**Table 5-2: Cherwell wards population and household change, 2001 to 2016**

Wards	All persons					Households				
	2001	2006	2011	2016	% change 2001-2016	2001	2006	2011	2016	% change 2001 to 2016
<b>CHERWELL</b>	131,988	132,183	135,603	141,535	7.2	53,370	55,988	59,096	63,508	19.0
Adderbury	2,736	2,632	2,799	2,783	1.7	1,108	1,167	1,266	1,280	15.5
Ambrosden and Chesterton	3,336	3,137	3,482	4,693	40.7	1,103	1,120	1,312	1,881	70.5
Banbury Calthorpe	5,366	5,258	5,349	5,740	7.0	2,198	2,215	2,301	2,556	16.3
Banbury Easington	7,625	7,633	7,667	7,864	3.1	3,178	3,288	3,408	3,598	13.2
Banbury Grimsbury and Castle	8,897	9,198	10,146	10,596	19.1	4,251	4,400	5,015	5,408	27.2
Banbury Hardwick	5,988	7,678	8,170	8,011	33.8	2,460	3,232	3,592	3,607	46.6
Banbury Neithrop	5,552	5,565	5,565	5,483	- 1.2	2,284	2,359	2,425	2,455	7.5
Banbury Ruscote	8,435	8,207	8,165	7,981	- 5.4	3,170	3,185	3,240	3,269	3.1
Bicester East	6,194	6,097	5,949	5,799	- 6.4	2,314	2,344	2,360	2,360	2.0
Bicester North	5,653	6,392	6,322	6,162	9.0	2,285	2,680	2,705	2,705	18.4
Bicester South	4,366	5,213	5,702	6,304	44.4	1,860	2,289	2,543	2,893	55.5
Bicester Town	4,931	4,898	5,328	6,564	33.1	2,330	2,362	2,578	3,303	41.8
Bicester West	7,561	7,442	7,270	7,086	- 6.3	2,854	2,910	2,920	2,924	2.5
Bloxham and Bodicote	5,860	5,613	6,012	7,537	28.6	2,264	2,295	2,541	3,290	45.3
Caversfield	2,897	2,832	2,791	2,738	- 5.5	1,030	1,047	1,054	1,054	2.3
Cropleydy	2,707	2,532	2,563	2,538	- 6.2	1,142	1,152	1,202	1,212	6.1
Deddington	2,649	2,456	2,470	2,437	- 8.0	1,101	1,114	1,151	1,161	5.4
Fringford	2,337	2,270	2,238	2,181	- 6.7	916	939	954	954	4.1
Hook Norton	2,492	2,440	2,455	2,403	- 3.6	1,024	1,051	1,085	1,092	6.6
Kidlington North	5,285	5,248	5,250	5,157	- 2.4	2,240	2,286	2,356	2,380	6.2
Kidlington South	8,458	8,149	8,127	8,195	- 3.1	3,293	3,324	3,408	3,517	6.8
Kirtlington	2,869	2,785	2,862	2,847	- 0.7	1,167	1,187	1,253	1,277	9.4
Launton	3,048	2,984	3,321	3,491	14.6	1,037	1,073	1,264	1,362	31.3
Otmoor	2,455	2,331	2,327	2,281	- 7.1	941	947	964	964	2.4
Sibford	2,520	2,306	2,304	2,264	- 10.2	980	1,060	1,072	1,072	9.4
The Astons and Heyfords	4,711	4,512	4,537	6,029	28.0	1,931	1,978	2,040	2,824	46.2
Wroxton	2,531	2,125	2,072	2,044	- 19.2	1,044	1,055	1,061	1,061	1.6
Yarnton Gosford and Water Eaton	4,528	4,250	4,359	4,324	- 4.5	1,866	1,930	2,028	2,050	9.9

**Table 5-3: Oxford wards population and household change, 2001 to 2016**

	All persons					Households				
	2001	2006	2011	2016	% change 2001 to 2016	2001	2006	2011	2016	% change 2001 to 2016
<b>OXFORD</b>	135,509	140,398	147,120	153,408	13.2	51,621	54,543	57,674	61,100	18.4
Barton and Sandhills	5,934	6,766	7,208	8,643	45.7	2,349	2,730	2,914	3,528	50.2
Blackbird Leys	5,843	5,764	5,785	5,803	-0.7	2,301	2,306	2,322	2,351	2.2
Carfax	8,931	9,746	9,889	11,114	24.4	1,335	1,658	1,764	2,478	85.6
Churchill	6,131	6,566	6,889	6,880	12.2	2,235	2,438	2,586	2,609	16.7
Cowley	5,507	5,516	5,615	5,819	5.7	2,327	2,370	2,417	2,527	8.6
Cowley Marsh	4,947	5,120	5,876	6,252	26.4	2,065	2,188	2,532	2,725	32.0
Headington	5,673	5,806	6,025	6,131	8.1	2,356	2,454	2,558	2,628	11.5
Headington Hill and Northway	4,925	4,933	5,080	5,219	6.0	1,702	1,722	1,794	1,868	9.8
Hinksey Park	5,888	6,231	6,405	6,456	9.6	2,494	2,699	2,787	2,837	13.8
Iffley Fields	5,290	5,316	5,537	5,752	8.7	2,065	2,109	2,206	2,316	12.2
Jericho and Osney	5,952	6,269	6,484	6,840	14.9	2,770	2,985	3,093	3,297	19.0
Littlemore	5,697	5,753	6,276	6,589	15.7	2,452	2,517	2,755	2,915	18.9
Lye Valley	6,208	6,386	6,558	6,660	7.3	2,369	2,486	2,565	2,625	10.8
Marston	6,166	6,190	6,464	6,672	8.2	2,555	2,613	2,738	2,853	11.7
North	5,492	5,462	6,111	6,189	12.7	1,785	1,781	2,088	2,148	20.3
Northfield Brook	6,477	6,541	6,635	6,670	3.0	2,607	2,681	2,722	2,757	5.8
Quarry and Risinghurst	6,028	6,265	6,627	6,727	11.6	2,506	2,646	2,812	2,877	14.8
Rose Hill and Iffley	6,074	6,090	6,728	7,013	15.5	2,383	2,430	2,694	2,829	18.7
St. Clement's	5,794	6,322	6,487	6,550	13.0	2,178	2,434	2,518	2,573	18.1
St. Margaret's	4,670	5,183	5,434	5,439	16.5	1,643	1,912	2,033	2,053	25.0
St. Mary's	5,085	5,233	5,556	5,542	9.0	1,795	1,886	2,028	2,048	14.1
Summertown	7,108	7,234	7,531	7,759	9.2	2,814	2,916	3,061	3,191	13.4
Wolvercote	5,689	5,705	5,918	6,688	17.6	2,536	2,583	2,689	3,069	21.0

Table 5-4: South Oxfordshire wards population and household change, 2001 to 2016

	All persons					Households				
	2001	2006	2011	2016	% change 2001 to 2016	2001	2006	2011	2016	% change 2001 to 2016
<b>SOUTH OXFORDSHIRE</b>	128,307	126,409	129,330	137,602	7.2	52,148	53,320	55,454	60,203	15.4
Aston Rowant	2,392	2,322	2,312	2,271	- 5.1	957	965	975	977	2.1
Benson	6,107	5,939	5,923	5,815	- 4.8	2,181	2,203	2,236	2,240	2.7
Berinsfield	5,771	5,610	5,652	5,540	- 4.0	2,313	2,337	2,390	2,391	3.4
Brightwell	2,574	2,531	2,556	4,257	65.4	947	961	980	1,707	80.3
Chalgrove	2,918	2,843	2,835	2,777	- 4.8	1,090	1,106	1,120	1,120	2.8
Chiltern Woods	2,263	2,246	2,240	2,197	- 2.9	936	967	976	976	4.3
Chinnor	5,854	5,739	6,166	6,329	8.1	2,198	2,241	2,445	2,559	16.4
Cholsey and Wallingford South	5,100	5,036	5,313	5,886	15.4	2,030	2,074	2,220	2,520	24.1
Crowmarsh	2,419	2,351	2,431	2,393	- 1.1	890	898	951	951	6.9
Didcot All Saints	5,468	5,353	5,799	8,927	63.3	2,188	2,224	2,452	3,887	77.7
Didcot Ladygrove	7,106	7,071	7,184	9,959	40.2	3,022	3,127	3,251	4,618	52.8
Didcot Northbourne	5,296	5,243	5,200	5,107	- 3.6	2,296	2,363	2,390	2,395	4.3
Didcot Park	5,598	5,428	5,436	6,589	17.7	2,273	2,289	2,322	2,882	26.8
Forest Hill and Holton	2,882	2,829	2,820	2,774	- 3.8	1,060	1,081	1,092	1,093	3.1
Garsington	2,670	2,579	2,571	2,523	- 5.5	1,067	1,072	1,080	1,080	1.2
Goring	5,496	5,382	5,385	5,296	- 3.7	2,353	2,382	2,409	2,411	2.5
Great Milton	2,725	2,669	2,679	2,636	- 3.3	1,072	1,091	1,111	1,114	3.9
Hagbourne	2,708	2,618	2,622	3,013	11.3	1,054	1,059	1,075	1,262	19.7
Henley North	5,183	5,091	5,459	5,390	4.0	2,548	2,592	2,829	2,844	11.6
Henley South	5,448	5,379	5,635	5,519	1.3	2,496	2,559	2,729	2,729	9.3
Sandford	2,590	2,545	2,538	2,505	- 3.3	1,069	1,079	1,085	1,086	1.6
Shiplake	4,912	4,806	4,790	4,708	- 4.2	1,831	1,859	1,871	1,872	2.2
Sonning Common	5,264	5,127	5,170	5,081	- 3.5	2,109	2,130	2,173	2,177	3.2
Thame North	5,838	5,645	5,752	5,654	- 3.2	2,296	2,310	2,392	2,397	4.4
Thame South	5,236	5,237	5,695	5,589	6.7	2,163	2,245	2,480	2,480	14.7
Wallingford North	5,335	5,741	6,035	5,936	11.3	2,367	2,646	2,834	2,839	19.9
Watlington	5,153	5,112	5,204	5,111	- 0.8	2,149	2,216	2,290	2,294	6.7
Wheatley	5,275	5,162	5,169	5,086	- 3.6	2,241	2,277	2,307	2,312	3.2
Woodcote	2,725	2,777	2,758	2,734	0.3	956	971	993	994	4.0

**Table 5-5: Vale of White Horse wards population and household change, 2001 to 2016 (option 1: development in Abingdon)**

	All persons					Households				
	2001	2006	2011	2016	% change 2001 to 2016	2001	2006	2011	2016	% change 2001 to 2016
<b>VALE OF WHITE HORSE</b>	115,772	117,407	121,287	127,492	10.1	45,824	47,826	49,894	53,308	16.3
Abingdon Abbey and Barton	4,522	4,888	5,656	5,704	26.1	2,063	2,296	2,681	2,743	33.0
Abingdon Caldecott	4,412	4,527	4,786	5,381	22.0	1,708	1,804	1,920	2,195	28.5
Abingdon Dunmore	4,780	4,761	4,735	4,690	-1.9	1,863	1,910	1,920	1,930	3.6
Abingdon Fitzharris	4,298	4,354	4,372	4,335	0.9	1,747	1,821	1,847	1,857	6.3
Abingdon Northcourt	4,611	4,600	4,672	4,623	0.3	1,910	1,958	2,008	2,018	5.7
Abingdon Ock Meadow	4,169	4,433	4,723	4,712	13.0	1,797	1,963	2,106	2,131	18.6
Abingdon Peachcroft	4,537	4,436	4,395	4,330	-4.6	1,694	1,706	1,708	1,708	0.8
Appleton and Cumnor	6,409	6,301	6,417	6,751	5.3	2,609	2,628	2,684	2,868	9.9
Blewbury and Upton	1,953	1,938	1,956	1,949	-0.2	863	880	896	906	5.0
Craven	2,240	2,185	2,230	2,197	-1.9	902	904	913	913	1.2
Drayton	2,224	2,239	2,320	2,323	4.4	897	929	968	983	9.6
Faringdon and The Coxwells	7,037	7,402	7,803	8,551	21.5	2,982	3,222	3,430	3,821	28.1
Greendown	2,179	2,172	2,388	2,375	9.0	870	892	988	998	14.7
Grove	7,428	7,563	7,528	9,642	29.8	2,845	2,983	2,991	3,901	37.1
Hanneys	2,184	2,175	2,188	2,166	-0.8	881	902	911	916	4.0
Harwell	3,783	3,725	3,799	5,946	57.2	1,519	1,536	1,557	2,512	65.4
Hendreds	4,074	4,096	4,105	4,055	-0.5	1,625	1,680	1,697	1,702	4.7
Kennington and South Hinksey	4,268	4,304	4,384	4,339	1.6	1,734	1,794	1,843	1,853	6.9
Kingston Bagpuize with Southmoor	2,275	2,298	2,325	2,317	1.9	869	900	910	920	5.9
Longworth	2,247	2,225	2,218	2,182	-2.9	898	914	916	916	2.0
Marcham and Shippon	3,847	3,777	3,819	3,806	-1.1	1,122	1,139	1,160	1,170	4.3
North Hinksey and Wytham	4,459	4,409	4,626	5,288	18.6	1,780	1,808	1,896	2,226	25.1
Radley	2,769	2,758	2,775	2,751	-0.6	933	953	963	968	3.8
Shrivenham	5,465	5,359	5,397	5,335	-2.4	2,007	2,025	2,033	2,043	1.8
Stanford	2,138	2,412	2,440	2,429	13.6	859	995	1,014	1,024	19.2
Sunningwell and Wootton	4,191	4,164	4,182	4,217	0.6	1,704	1,735	1,751	1,791	5.1
Sutton Courtenay and Appleford	2,761	2,951	3,076	3,056	10.7	1,071	1,178	1,238	1,248	16.5
Wantage Charlton	6,164	6,684	7,688	7,765	26.0	2,477	2,761	3,157	3,234	30.6
Wantage Segsbury	4,348	4,272	4,281	4,278	-1.6	1,593	1,608	1,628	1,653	3.8

**Table 5-6: Vale of White Horse wards population and household change, 2001 to 2016 (option 2: development in Wantage)**

	All persons					Households				
	2001	2006	2011	2016	% change 2001 to 2016	2001	2006	2011	2016	% change 2001 to 2016
<b>VALE OF WHITE HORSE</b>	115,772	117,407	121,287	127,492	10.1	45,824	47,826	49,894	53,308	16.3
Abingdon Abbey and Barton	4,522	4,888	5,656	5,707	26.2	2,063	2,296	2,681	2,743	33.0
Abingdon Caldecott	4,412	4,527	4,786	4,776	8.3	1,708	1,804	1,920	1,945	13.9
Abingdon Dunmore	4,780	4,761	4,735	4,692	-1.9	1,863	1,910	1,920	1,930	3.6
Abingdon Fitzharris	4,298	4,354	4,372	4,336	0.9	1,747	1,821	1,847	1,857	6.3
Abingdon Northcourt	4,611	4,600	4,672	4,625	0.3	1,910	1,958	2,008	2,018	5.6
Abingdon Ock Meadow	4,169	4,433	4,723	4,714	13.1	1,797	1,963	2,106	2,131	18.6
Abingdon Peachcroft	4,537	4,436	4,395	4,332	-4.5	1,694	1,706	1,708	1,708	0.9
Appleton and Cumnor	6,409	6,301	6,417	6,754	5.4	2,609	2,628	2,684	2,868	9.9
Blewbury and Upton	1,953	1,938	1,956	1,950	-0.2	863	880	896	906	5.0
Craven	2,240	2,185	2,230	2,198	-1.9	902	904	913	913	1.3
Drayton	2,224	2,239	2,320	2,323	4.5	897	929	968	983	9.6
Faringdon and The Coxwells	7,037	7,402	7,803	8,555	21.6	2,982	3,222	3,430	3,821	28.1
Greendown	2,179	2,172	2,388	2,376	9.0	870	892	988	998	14.7
Grove	7,428	7,563	7,528	9,646	29.9	2,845	2,983	2,991	3,901	37.1
Hanneys	2,184	2,175	2,188	2,167	-0.8	881	902	911	916	4.0
Harwell	3,783	3,725	3,799	5,948	57.2	1,519	1,536	1,557	2,512	65.4
Hendreds	4,074	4,096	4,105	4,056	-0.4	1,625	1,680	1,697	1,702	4.8
Kennington and South Hinksey	4,268	4,304	4,384	4,341	1.7	1,734	1,794	1,843	1,853	6.9
Kingston Bagpuize with Southmoor	2,275	2,298	2,325	2,318	1.9	869	900	910	920	5.9
Longworth	2,247	2,225	2,218	2,183	-2.9	898	914	916	916	2.0
Marcham and Shippon	3,847	3,777	3,819	3,807	-1.0	1,122	1,139	1,160	1,170	4.2
North Hinksey and Wytham	4,459	4,409	4,626	5,290	18.6	1,780	1,808	1,896	2,226	25.0
Radley	2,769	2,758	2,775	2,752	-0.6	933	953	963	968	3.8
Shrivenham	5,465	5,359	5,397	5,338	-2.3	2,007	2,025	2,033	2,043	1.8
Stanford	2,138	2,412	2,440	2,430	13.7	859	995	1,014	1,024	19.2
Sunningwell and Wootton	4,191	4,164	4,182	4,219	0.7	1,704	1,735	1,751	1,791	5.1
Sutton Courtenay and Appleford	2,761	2,951	3,076	3,057	10.7	1,071	1,178	1,238	1,248	16.5
Wantage Charlton	6,164	6,684	7,688	8,322	35.0	2,477	2,761	3,157	3,484	40.6
Wantage Segsbury	4,348	4,272	4,281	4,280	-1.6	1,593	1,608	1,628	1,653	3.8

**Table 5-7: West Oxfordshire wards population and household change, 2001 to 2016**

	All persons					Households				
	2001	2006	2011	2016	% change 2001 to 2016	2001	2006	2011	2016	% change 2001 to 2016
WEST OXFORDSHIRE	95,701	100,013	105,811	107,693	12.5	38,536	41,299	44,353	45,662	18.5
Alvescot and Filkins	1,686	1,698	1,709	1,725	2.3	714	738	755	773	8.3
Ascott and Shipton	1,960	2,012	2,017	2,038	4.0	840	879	893	913	8.7
Bampton and Clanfield	3,625	3,621	3,678	3,706	2.2	1,510	1,552	1,604	1,637	8.4
Brize Norton and Shilton	2,751	2,757	2,778	2,794	1.6	798	833	844	854	7.0
Burford	1,887	1,888	1,895	1,902	0.8	868	882	897	910	4.8
Carterton North East	2,984	5,219	6,941	7,292	144.3	1,029	1,892	2,565	2,720	164.4
Carterton North West	4,599	4,537	4,649	4,703	2.3	1,839	1,878	1,964	2,012	9.4
Carterton South	4,208	4,150	4,175	4,194	-0.3	1,587	1,609	1,645	1,673	5.4
Chadlington and Churchill	1,927	1,931	1,954	1,969	2.2	782	804	828	846	8.2
Charlbury and Finstock	3,785	3,796	3,789	3,775	-0.3	1,604	1,644	1,668	1,686	5.1
Chipping Norton	5,980	6,098	6,619	6,783	13.4	2,549	2,670	2,949	3,056	19.9
Ducklington	2,073	2,039	2,095	2,087	0.7	815	821	858	866	6.3
Eynsham and Cassington	5,733	5,683	5,782	5,882	2.6	2,314	2,346	2,420	2,493	7.7
Freeland and Hanborough	4,121	4,108	4,159	4,161	1.0	1,592	1,620	1,663	1,683	5.7
Hailey Minster Lovell & Leafield	3,861	3,847	3,874	3,878	0.5	1,585	1,618	1,654	1,675	5.7
Kingham Rollright and Enstone	4,137	4,140	4,226	4,234	2.3	1,631	1,669	1,729	1,752	7.4
Milton-under-Wychwood	1,957	1,979	2,026	2,028	3.6	866	898	935	948	9.5
North Leigh	1,933	1,906	1,908	1,910	-1.2	762	770	785	798	4.7
Standlake Aston & Stanton Harcourt	3,977	4,001	4,038	4,065	2.2	1,555	1,602	1,641	1,674	7.7
Stonesfield and Tackley	4,050	3,986	3,960	3,938	-2.8	1,657	1,673	1,692	1,705	2.9
The Bartons	1,936	1,923	1,943	1,940	0.2	787	803	825	835	6.1
Witney Central	3,871	4,228	6,141	6,171	59.4	1,524	1,708	2,547	2,579	69.2
Witney East	4,486	6,016	6,718	6,783	51.2	1,821	2,532	2,871	2,927	60.8
Witney North	4,166	4,079	4,068	4,041	-3.0	1,601	1,609	1,630	1,640	2.4
Witney South	5,957	6,302	6,477	6,466	8.5	2,503	2,731	2,852	2,882	15.1
Witney West	4,284	4,311	4,258	5,255	22.7	1,687	1,765	1,776	2,226	31.9
Woodstock and Bladon	3,767	3,756	3,931	3,972	5.4	1,718	1,755	1,865	1,901	10.7

## 6 Appendix 2 Housing data for the OCC ward level population forecasts

Development data has been provided by the District Councils. Please note that all potential sites have been included. Some of these sites may not be built – the annual updates of the population forecasts will reflect any changes.

### Cherwell: Planned housing to 2016

Ward	Sites	Total Projected Completions 2001-2016
Adderbury	Tom Griffins, Adderbury	24
Adderbury	Land south of Aynho Road, Adderbury	19
Adderbury	Green Hill House, Oxford Road, Adderbury	53
Ambrosden	Former MOD housing estate (land adjoining Laburnum Close), Ambrosden	24
Ambrosden	West of West Hawthorn, Ambrosden	40
Ambrosden	South West Bicester	627
Banbury Calthorpe	Land rear of Hightown Road	10
Banbury Calthorpe	Penrose House, 67 Hightown Road	12
Banbury Calthorpe	Orchard Lodge, Warwick Road	18
Banbury Calthorpe	Land at Bankside	282
Banbury Easington	Oxford Lodge, 51 Oxford Road	11
Banbury Easington	South of Warwick Road & west of North Bar	110
Banbury Easington	Neithrop House	14
Banbury Easington	Land adjoining and to the rear of 286 to 304 Broughton Road	18
Banbury Easington	42 South Bar Street	13
Banbury Easington	Oxford and Cherwell College, North Campus, Broughton Road	110
Banbury Easington	3 West Bar	10
Banbury Easington	Town Centre House, Southam Road	30
Banbury Easington	TA Centre, Harriers View, Oxford Road	0
Banbury Easington	25-27 West Bar	10
Banbury Easington	South Bar House	0
Banbury Grimsbury and Castle	Manor Farm (remainder to be built on former allocated site)	14
Banbury Grimsbury and Castle	61-66 Calthorpe Street	14
Banbury Grimsbury and Castle	Spencer House, Britannia Road	68
Banbury Grimsbury and Castle	Former Cattle Market and adjoining land (Regeneration Area East)	662

*Oxfordshire small area population and household forecasts*

Banbury Grimsbury and Castle	Land north of Castle Street & east of Southam Road	123
Banbury Grimsbury and Castle	Grimsbury Local Centre	38
Banbury Grimsbury and Castle	Dashwood School	20
Banbury Grimsbury and Castle	Land west of railway station (Regeneration Area West / Canalside)	197
Banbury Grimsbury and Castle	28A Ferguson Road	10
Banbury Grimsbury and Castle	Marlborough Arms Public House, 1A Gatteridge Street	0
Banbury Grimsbury and Castle	Calthorpe St (East)	0
Banbury Grimsbury and Castle	Bolton Road West	0
Banbury Grimsbury and Castle	Bolton Road East	0
Banbury Grimsbury and Castle	Corner of George St & Britannia Road	0
Banbury Grimsbury and Castle	Crofts, 21-27 Broad Street	0
Banbury Hardwick	Hanwell Fields	1049
Banbury Neithrop	Former Hartwell Ford Motors.	68
Banbury Neithrop	Junction of Warwick Road & Foundry Street, 92-94 Warwick Road	22
Banbury Neithrop	Land adjoining and north west of 35 Crouch Hill Road	25
Banbury Neithrop	Lincoln House, Lincoln Close	16
Banbury Ruscote	108 Bretch Hill	10
Banbury Ruscote	Orchard Fields Primary School	40
Banbury Ruscote	Bretch Hill Farm	24
Bicester North	Sunlight Services, Buckingham Road	20
Bicester South	Oxfordshire County Council Highways Depot	60
Bicester South	Gavray Drive	500
Bicester Town	South West Bicester	623
Bicester Town	Jubilee Garage (Coach House Mews)	55
Bicester Town	Vine Cottages	25
Bicester Town	Rose Cottage, London Road	11
Bicester Town	4-6 London Road	13
Bicester Town	West of Chapel St. & Bryan House	6
Bicester Town	Transco Depot, Launton Road	18
Bicester Town	Land south of Church Lane (Old Place Yard)	30
Bicester Town	Bure Place and Franklins Yard – west of Sheep Street & east of Manorsfield Road	19
Bicester Town	Bicester Town Railway Station	82
Bicester Town	Cattle Market	40
Bicester Town	St. Edburg's School	14

Oxfordshire small area population and household forecasts

Bicester Town	Bessemer Close / Launton Road	50
Bicester Town	West of Victoria Road & South of Victoria Court	0
Bicester Town	Church Car Park, Hanover Gardens	0
Bicester Town	Corner of Victoria Road & Linden Road	20
Bicester Town	18 London Road	0
Bloxham and Bodicote	Land at Bankside	790
Bloxham and Bodicote	Land off Banbury Road, Ells Lane, Bloxham	27
Bloxham and Bodicote	Beauchamp Squash Club, Barford Road, Bloxham	14
Bloxham and Bodicote	North of Milton Road, Bloxham	74
Bloxham and Bodicote	Oak Farm, Milcombe	32
Cropredy	Little Bourton Service Station, Southam Road, Little Bourton	22
Kidlington North	Land adjacent 55 High St, Kidlington	11
Kidlington North	Car Park to rear of Co-Op Supermarket, 26 High Street, Kidlington	20
Kidlington South	Market Square (Land At Corner Of High Street and Sterling Road Approach), Kidlington	22
Kidlington South	Bowood House Hotel, 238 Oxford Road, Kidlington	21
Kidlington South	18 High Street, Kidlington	12
Kidlington South	Adult Training Centre, Blenheim Road, Kidlington	14
Kidlington South	Thames Valley Police HQ, Kidlington	85
Kirtlington	OS Parcel 1400 East Of Sands Close Adjacent Junction Of Springwell Road And Station Road, Bletchington	12
Kirtlington	North of Gossway Fields (formerly Crutchmore Crescent), Kirtlington	15
Launton	Land at and including Sherwood Close, Launton	24
Launton	South of Buchanan Road, Arccott	16
Launton	South of Greenfields, Arccott	25
Launton	North of Cassington Road (land adjacent Exeter Farm), Yarnton	168
The Astons and Heyfords	Former RAF Upper Heyford	761
Yarnton, Gosford and Water Eaton	Land north east of Gosford Farm, Bicester Road, Gosford	36
Yarnton, Gosford and Water Eaton	The Manor House, Springhill Road, Begbroke	13
Yarnton, Gosford and Water Eaton	Tyre Depot, South of Cassington Road	0
Yarnton, Gosford and Water Eaton	Yarnton House, Rutten Lane, Yarnton	0

Yarnton, Gosford and Water Eaton	14 units remaining from earlier adopted local plans (not referred to in non-statutory Local Plan)	11
Banbury	Projections for Small Sites (less than 10 dwellings) Within UHPS Boundaries	103
Bicester	Projections for Small Sites (less than 10 dwellings) Within UHPS Boundaries	30
Bicester	Projections for Small Sites (less than 10 dwellings) Within UHPS Boundaries	153
Bicester	Projections for Small (PDL) Sites Outside UHPS Boundaries	150
Remaining areas	Planning Permissions – Other Sites	141

**Oxford: planned housing completions**

<b>Ward_Names</b>	<b>Site Address</b>	<b>2006-2016 grand total</b>	<b>2006-2026 grand total</b>
Barton and Sandhills	Barton Village School (Hubble Close)	0	0
Barton and Sandhills	Beckley View		
Barton and Sandhills	Bernwood School, North Way	0	0
Barton and Sandhills	Sandhills School, Delbush Avenue	0	0
Barton and Sandhills	Land at Barton	525	1000
Barton and Sandhills	Former Barton Road Cricket Ground	25	25
Barton and Sandhills	Ormerod School	75	75
Barton and Sandhills	Townsend House	24	24
Blackbird Leys	Blackbird Leys Regeneration Zone	0	0
Blackbird Leys	Longlands	24	24
Carfax	Brewery site, St Thomas' Street	0	0
Carfax	BT site, Paradise Street	0	0
Carfax	Park End Street/St Thomas' Street	0	0
Carfax	Cooper Callas site, Paradise Street	10	10
Carfax	St Aldate's Regeneration Zone	0	0
Carfax	Telephone Exchange, Speedwell Street	27	27
Carfax	West of St Aldate's, south of Queen Street	20	20
Carfax	Westgate Centre	127	127
Carfax	Worcester Street Car Park	18	18
Carfax	Falklands House	16	16
Carfax	Albion Place Car Park	14	14
Carfax	County Hall	65	65
Carfax	Island Site	38	38
Carfax	Macclesfield House	23	23
Carfax	Magistrates Court	10	10
Carfax	Nursery and Osney Warehouse	25	25
Carfax	Oxford and Cherwell Valley College	40	40
Carfax	Oxpens Road	240	240
Churchill	Leiden Road	18	18
Cowley	Between Towns Road	45	45
Cowley	Cowley Centre	50	50
Cowley	Land Adjacent to TKMaxx	10	10
Cowley Marsh	Bus Depot site	115	115
Cowley Marsh	Temple Cowley Middle School	111	111

*Oxfordshire small area population and household forecasts*

Cowley Marsh	Leafield Road		
Cowley Marsh	Lincoln College Sports Ground	68	68
Cowley Marsh	Cowley Marsh Depot	75	75
Headington	Manor Ground	27	27
Headington	Ruskin College, Dunstan Road	20	20
Headington Hill and Northway	Northway Centre	14	14
Headington Hill and Northway	Sutton Road Hall	10	10
Hinksey Park	Rivermead Hospital	0	0
Holywell	Police Station, St Aldate's	30	30
Iffley Fields	Donnington Middle School	20	20
Iffley Fields	Scrap Yard, Jackdaw Lane	70	70
Jericho and Osney	Oseney Court, Botley Road	0	0
Jericho and Osney	Arthur Street off Mill Street	20	20
Jericho and Osney	Canalside, Jericho	54	54
Jericho and Osney	Fire Station, Rewley Road	40	40
Jericho and Osney	Osney Mill and Works, Mill Street	12	12
Jericho and Osney	Oxford Railway Station/Becket Street Car Park	70	70
Jericho and Osney	Lamarsh Road	17	17
Littlemore	Speedwell First School	73	73
Littlemore	Mabel Pritchard School	46	46
Littlemore	Railway Line (former oil depot)	85	85
Littlemore	Maintenance Depot	10	10
Littlemore	Northfield House		
Lye Valley	Garden House, Hollow Way	0	0
Lye Valley	Shotover View	30	30
Marston	Milham Ford School	47	47
Marston	Harlow Centre and Site	47	47
Marston	Marston Court	23	23
North	Lucy's factory site, Walton Well Road	251	251
Northfield Brook	Northfield School site	0	50
Quarry and Risinghurst	Upper Meadow/Quarry Bank	0	0
Quarry and Risinghurst	Windmill First School	44	44
Rose Hill and Iffley	St Augustine's School, Iffley Turn	74	74
Rose Hill and Iffley	Former St Augustine's playing fields	100	100
St Clements	Union Street Car Park	20	20
St Margarets	OAC factory site (OAC East), Woodstock Road	73	73
Summertown	BMW garage, Banbury Road	10	10

*Oxfordshire small area population and household forecasts*

Summertown	Cuttleslowe Court	33	33
Summertown	Diamond Place	50	50
Summertown	Suffolk House	15	15
Summertown	Land at Summertown	0	200
Wolvercote	Elsfield Hall	24	24
Wolvercote	Wolvercote Paper Mill	200	200
Wolvercote	Land West of Oxford Hotel	140	140
		3497	4222
Windfall sites (allocated across wards)	Small sites	950	1900
	Large sites	750	1500
		1700	3400

## South Oxfordshire: planned housing to 2016

Ward_Names	Site address	Total housing 2006-16
BENSON	Former Benson Infant School, Westfield Road	11
BERINSFIELD	Lodden Avenue, Berinsfield	0
BERINSFIELD	Cherwell Road (Phase 2 Evenlode Drive)	0
BERINSFIELD	Evenlode Drive	0
BERINSFIELD	Site at junction of Fane Drive & Green Furlong	16
CHINNOR	Land at Glimbers Grove, Chinnor	0
CHINNOR	Nos. 33-37, 20 & 22 Glimbers Grove	0
CHINNOR	Siarey's Yard, Chinnor	29
CHINNOR	Siarey's Yard, Station Road, Chinnor(P07/E1616)	31
CHINNOR	Chinnor Cement Works, Chinnor	160
CHOLSEY & WALLINGFORD SOUTH	Land at Downside Farm, off Papist Way (6 complete 07/08)	15
CHOLSEY & WALLINGFORD SOUTH	67 Honey Lane & former Thames Water pumping station, Cholsey ( 5 complete 6 under construction) * <b>Net total 10</b>	5
CHOLSEY & WALLINGFORD SOUTH	The Meadow, Land off Papist Way & Reading Road, Cholsey	13
CHOLSEY AND WALLINGFORD SOUTH	Paul's Malt, Wallingford	0
CHOLSEY AND WALLINGFORD SOUTH	Fair Mile Hospital, Cholsey	375
CROWMARSH	Wilder's site and adjoining land, Crowmarsh	42
DIDCOT ALL SAINTS	Council Depot, Lydalls Road, Didcot	0
DIDCOT ALL SAINTS	Garage sites at Great Western Drive, Didcot	0
DIDCOT ALL SAINTS	Britwell Lodge, Britwell Road	42
DIDCOT ALL SAINTS	Didcot Town Centre (not started)	22
DIDCOT ALL SAINTS	1 Manor Crescent, Didcot	10
DIDCOT ALL SAINTS	Haydon Road	22
DIDCOT ALL SAINTS	Vauxhall Barracks	0
Didcot all saints	didcot west	1160
DIDCOT LADYGROVE	Phase 14, Ladygrove, Didcot	0
DIDCOT LADYGROVE	Parcel 46, Ladygrove, Didcot	0
DIDCOT LADYGROVE	Ladygrove East	642
DIDCOT NORTHBOURNE	Land East of Hagbourne Road, Didcot	0
DIDCOT PARK	108 Park Road, Didcot	0
DIDCOT PARK	Land to the rear of 2 Colbourne Road	14
Didcot Park	contribution to Didcot West	555
GORING	30-36 Wallingford Road	6
Hagbourne	contribution to Didcot West	185

Oxfordshire small area population and household forecasts

HENLEY NORTH	Former AE Hobbs Pub. Valley Road, Henley	0
HENLEY NORTH	Crisp Road, Henley	0
HENLEY NORTH	Henley Brewery, Henley	17
HENLEY NORTH	The Malthouse, New Street	11
HENLEY NORTH	Market Place Mews, Henley	14
HENLEY NORTH	Townlands Hospital, Henley	0
HENLEY NORTH	Empstead Works	30
HENLEY SOUTH	Southfields, Greys Road, Henley	0
HENLEY SOUTH	Waterman's Road, Henley	10
HENLEY SOUTH	Land to the rear of Hallmark House, Meadow Road	14
HENLEY SOUTH	Perpetual House, Station Road, Henley	44
HENLEY SOUTH	Part of Invesco Park car park, Henley	29
SONNING COMMON	Walled Garden, Wyfold Court, Checkendon	0
SONNING COMMON	Sites 4, 4a & 5 Wyfold Court	0
SONNING COMMON	58-76 Shiplake Bottom	13
THAME SOUTH	Pickenfield, Howland Road, Thame	0
THAME SOUTH	Thame Park Road, Thame	0
THAME SOUTH	Van Diemens Road	10
THAME SOUTH	Pearce Court, Windmill Road	13
THAME SOUTH	Essex House Hotel, 149 Chinnor Rd & 1 Bridge Terrace, Thame	12
THAME SOUTH	Rycotewood College, Thame (98 units) 61 complete in 07/08	0
THAME SOUTH	Thame United	100
THAME SOUTH	Memec	40
WALLINGFORD NORTH	Wallingford Upper School	0
WALLINGFORD NORTH	Wallingford Upper School	0
WALLINGFORD NORTH	Wallingford Upper School	0
WALLINGFORD NORTH	Wallingford Upper School	0
WALLINGFORD NORTH	Station Road Industrial Estate, Wallingford (84 units)	84
WALLINGFORD NORTH	Land at Croft Villas, Wallingford	10
WALLINGFORD NORTH	Blue Mountains/Sinodun Centre, Wallingford	0
WALLINGFORD NORTH	Lamb Garage, Wallingford (14 units) amended to 13 units	12
WATLINGTON	Watlington School, Gorwell	0
WATLINGTON	Land at The Lilacs & Brook House, Watlington	0
WATLINGTON	Nettlebed Community School, High Street	11

WHEATLEY

Land adj Butlers Close, Cuddesdon Road, Horspath

0

**Vale of White Horse: planned housing to 2016**

<b>WARD NAME</b>	<b>Address:</b>	<b>total 2006-16</b>
ABINGDON ABBEY AND BARTON	West Central, Abingdon	47
ABINGDON ABBEY AND BARTON	Former British Gas Depot	31
ABINGDON ABBEY AND BARTON	28A – 30 Ock Street, Abingdon	0
ABINGDON ABBEY AND BARTON	45 The Vineyard	0
ABINGDON ABBEY AND BARTON	Braggs Cycles	0
ABINGDON ABBEY AND BARTON	The Maltings, Abingdon	70
ABINGDON ABBEY AND BARTON	The Red Lion, Abingdon	2
ABINGDON ABBEY AND BARTON	Thames View, Abingdon	169
ABINGDON ABBEY AND BARTON	Penlon site, Abingdon	7
ABINGDON ABBEY AND BARTON	Ambulance Station	10
ABINGDON ABBEY AND BARTON	5 – 12 A West St Helen St	14
ABINGDON ABBEY AND BARTON	The Old Gaol	61
ABINGDON CALDECOTT	Ladygrove House, Drayton Road	0
ABINGDON CALDECOTT	Abingdon Marina	0
ABINGDON CALDECOTT	Abingdon Marina	0
ABINGDON CALDECOTT	Abingdon Marina	0
ABINGDON CALDECOTT	Old Foundary (phase 2)	0
ABINGDON CALDECOTT	Caldecott School, Abingdon (permitted 16/07/03)	86
ABINGDON CALDECOTT	Abingdon Community Centre	12
ABINGDON FITZHARRIS	Colwell Drive, Abingdon	0
ABINGDON FITZHARRIS	Berrycroft, Abingdon	0
ABINGDON FITZHARRIS	Champion House, 12 Wootton Road	10
ABINGDON NORTHCOURT	St Nicholas School, Abingdon	0
ABINGDON NORTHCOURT	75-77 Northcourt Road	21
ABINGDON NORTHCOURT	79 – 87 Northcourt Road	20
ABINGDON OCK MEADOW	Morlands Brewery, Abingdon	0
ABINGDON OCK MEADOW	Colwell Drive, Abingdon (won on appeal)	62
ABINGDON OCK MEADOW	Former Esso station & Cross Roads	63
APPLETON AND CUMNOR	Timbmet (application likely March/April 2004 – in active pre-app discussions)	192
APPLETON AND CUMNOR	82 – 86 Cumnor Hill (permitted 04/08/03)	14
APPLETON AND CUMNOR	1-3 Dean Court Road	13
CRAVEN	Uffington Garage, Broad Street, Uffington	11
DRAYTON	Manor Farm, Drayton	28
DRAYTON	Rear 54 – 80 Abingdon Rd, Drayton	0
FARINGDON AND THE COXWELLS	Faringdon Health Centre	0

Oxfordshire small area population and household forecasts

FARINGDON AND THE COXWELLS	Coxwell Pit, Fernham Rd	0
FARINGDON AND THE COXWELLS	Faringdon Tennis Club	10
FARINGDON AND THE COXWELLS	The Faringdon Hotel	0
FARINGDON AND THE COXWELLS	Land West of Coxwell Road	0
FARINGDON AND THE COXWELLS	North of Park Road	0
FARINGDON AND THE COXWELLS	Nursery site, Faringdon	400
FARINGDON AND THE COXWELLS	Swan Lane, Faringdon	0
FARINGDON AND THE COXWELLS	35 Park Road	18
FARINGDON AND THE COXWELLS	Tetronics	24
FARINGDON AND THE COXWELLS	Peurgot Garage (LAPSED!)	0
FARINGDON AND THE COXWELLS	Manor farm	11
FARINGDON AND THE COXWELLS	Ferngrove, Portway	11
FARINGDON AND THE COXWELLS	Winslow & Coxwell House	35
GREENDOWN	Dow Elanco (has outline planning permission)*	73
Greendown	East Challow Country Club	14
GROVE	Elms Farm, Grove	0
GROVE	Grove airfield	900
HARWELL	Former pre-fabs, Chilton	75
HARWELL	Didcot	600
HARWELL	Horse & Jockey, Newbury Road, Chilton	11
HARWELL AND CHILTON	Chilton Fields	270
HENDREDS	Trenchard Avenue	0
HENDREDS	NE of Trenchard Avenue	0
HENDREDS	Havers Avenue	0
KENNINGTON AND SOUTH HINKSEY	The Scholar Gypsy, Kennington	0
KENNINGTON AND SOUTH HINKSEY	Kennington Service Station	0
KENNINGTON AND SOUTH HINKSEY	Cranbrook, Kennington	15
KENNINGTON AND SOUTH HINKSEY	Isis Works, South Hinksey	10
KENNINGTON AND SOUTH HINKSEY	214 Kennington Road	12
KINGSTON BAGPUIZE WITH SOUTHMOOR	Crabtree Fruit Farm	0
LONGWORTH	Haulage Yard, Buckland	0
MARCHAM AND SHIPPON	Land at Longfields	13
MARCHAM AND SHIPPON	Timber Yard	10
NORTH HINKSEY AND WYTHAM	The Fair Rosamund PH, N Hinksey	0
NORTH HINKSEY AND WYTHAM	Botley nursery	38
NORTH HINKSEY AND WYTHAM	Tilbury Lane and Poplar Road (site area split with Appleton and Cumnor)	150
NORTH HINKSEY AND WYTHAM	Lime Road, North Hinksey	130
NORTH HINKSEY AND WYTHAM	29 West Way	11

*Oxfordshire small area population and household forecasts*

NORTH HINKSEY AND WYTHAM	Delawarr Laboratories	10
RADLEY	5 Church Road, Radley	6
Shrivenham	Land off 6 Stainswick Lane	11
Shrivenham	31 Stainswick Lane	14
STANFORD	East of Faringdon Road	0
SUNNINGWELL AND WOOTTON	Wootton Business Park (permitted 04/08/03)	35
SUNNINGWELL AND WOOTTON	Warnborough College	17
SUTTON COURTENAY AND APPLEFORD	Adj Lady Place, S Courtenay	0
SUTTON COURTENAY AND APPLEFORD	Amey's site	15
SUTTON COURTENAY AND APPLEFORD	Christ Church, Hobbyhorse Lane	15
WANTAGE CHARLTON	Garston Lane School, Wantage	0
WANTAGE CHARLTON	C of E Infants School, Wantage	20
WANTAGE CHARLTON	Former Oakes Bros Site	45
WANTAGE CHARLTON	The Warehouse, Reading Road	0
WANTAGE CHARLTON	Ben Smith and Sons	15
WANTAGE CHARLTON	Pantiles	0
WANTAGE CHARLTON	Bus Depot	33
WANTAGE CHARLTON	The Wharf	58
WANTAGE CHARLTON	St Mary's School	237
WANTAGE CHARLTON	Abbey House, Stirlings Road	10
WANTAGE CHARLTON	13-17 Newbury Street	10
WANTAGE CHARLTON	24-28 Newbury Street	14
WANTAGE CHARLTON	39 Charlton Road	10
WANTAGE CHARLTON	61 Mill Street	43
	NE of Trenchard Avenue	7
Abingdon Caldecott or Wantage Charlton	Development of 1,500 homes by 2026, location to be decided, either Abingdon or Wantage.	250

**West Oxfordshire: planned housing to 2016**

Ward	Site	Total 2006-2016
Carterton North East	Carterton Area 4	0
Carterton North East	Carterton Area 8	0
Carterton North East	Carterton Area 10	1
Carterton North East	Carterton Area 12	2
Carterton North East	Carterton Area 14	0
Carterton North East	Carterton Area 13	101
Carterton North East	Carterton Area 15	17
Carterton North East	Carterton Area 16	17
Carterton North East	Carterton Area 20	0
Carterton North East	Carterton Area 17	44
Carterton North East	Carterton Area 18	17
Carterton North East	Carterton Area 19	0
Carterton North East	Carterton Area 21	95
Carterton North East	Carterton Area 23	4
Carterton North East	Carterton Area 24	99
Carterton North East	Carterton Area 27	21
Carterton North East	Carterton AH4	38
Carterton North East	Local Centre	98
Carterton North East	Carterton AH6	35
Carterton North East	Remaining Outline Perm.	26
Carterton North East	Remainder of development area	200
Carterton North East	other completions	0
Carterton north west	40 Swinbrook Road	14
carterton north west	land of Swinbrook road	12
Carterton North West	Carterton, Shilton Road (proposal 5)	50
Witney East	NE Witney Dev Area 2	3
Witney East	NE Witney Dev Area 5	5
Witney East	NE Witney Dev Area Phase 5a	16
Witney East	NE Witney Dev Area 6	0
Witney East	NE Witney Dev Area 7	81
Witney East	NE Witney Community Centre (=Northfield Farm)	19
Witney East	NE Witney Dev Area 4	0
Witney East	NE Witney Dev Area 8	1
Witney East	NE Witney Dev Area 9	0
Witney East	NE Witney Dev Area 10	0
Witney East	NE Witney Dev Area 11	63

*Oxfordshire small area population and household forecasts*

Witney East	NE Witney Dev Area 12	32
Witney East	NE Witney Dev Area 13	83
Witney East	NE Witney remaining area	29
Witney East	Cogges proposal 5	46
Witney East	Other Completions	0
Witney Central	Unit 31 Bridge Street Mills	1
Witney Central	Rear of Methodist Church & 54 High Street	20
Witney Central	Early's Mill, Burford Road	151
Witney Central	Bridge St Mills	209
Witney Central	Tower Hill Works	61
Witney Central	West of High St	185
Witney Central	44 Moorland Road	10
Witney Central	Springfield Close	12
Witney Central	109 Burford Road	11
Witney Central	Dark Lane	161
Witney North	1a Crawley Road	14
Witney West	North Curbridge	450
Witney West	Valence Crescent	11
Witney South	26 Church Green	24
Witney South	5 Welch Way	14
Witney South	Buttercross works	49
Ascott and Shipton	Corner House Farm, Ascott	0
Chipping Norton	White Hart, Chipping Norton	0
Chipping Norton	Rock Hill, Chipping Norton	26
Chipping Norton	Parker Knoll site, Chipping Norton	133
Chipping Norton	Old Quarry	10
Chipping Norton	Royal British Legion Club	10
Chipping Norton	Learning Disabilities Unit	14
Chipping Norton	Cromwell Park	80
Chipping Norton	The Mill, Station Road	24
Chipping Norton	Station Mill Antiques	12
Chipping Norton	Anakiwa	0
Ducklington, Curbridge & Lew	Ducklington Mill	24
Eynsham and Cassington	Eynsham : East proposal 3	100
Freeland	Shepherds Hall	6
Freeland	53-57 Wroslyn Road	11
Hailey, Minster Lovell & Leafield	Fairspear Road, Leafield	10
Kingham, Rollright & Enstone	Kingham Hill School	10

*Oxfordshire small area population and household forecasts*

---

Kingham, Rollright & Enstone	Filandic, Enstone	11
Kingham, Rollright & Enstone	Crossways, Tew Road	10
Milton	Frog Lane, Milton	0
Milton	Cats Eyes, Jubilee Lane	19
Standlake	Oxford Downs CC	11
The Bartons	Worton Road, Middel Barton	14
Woodstock & Bladon	Woodstock East of Marlboro' school	60
WINDFALL	Witney	142
	Rest of district	968