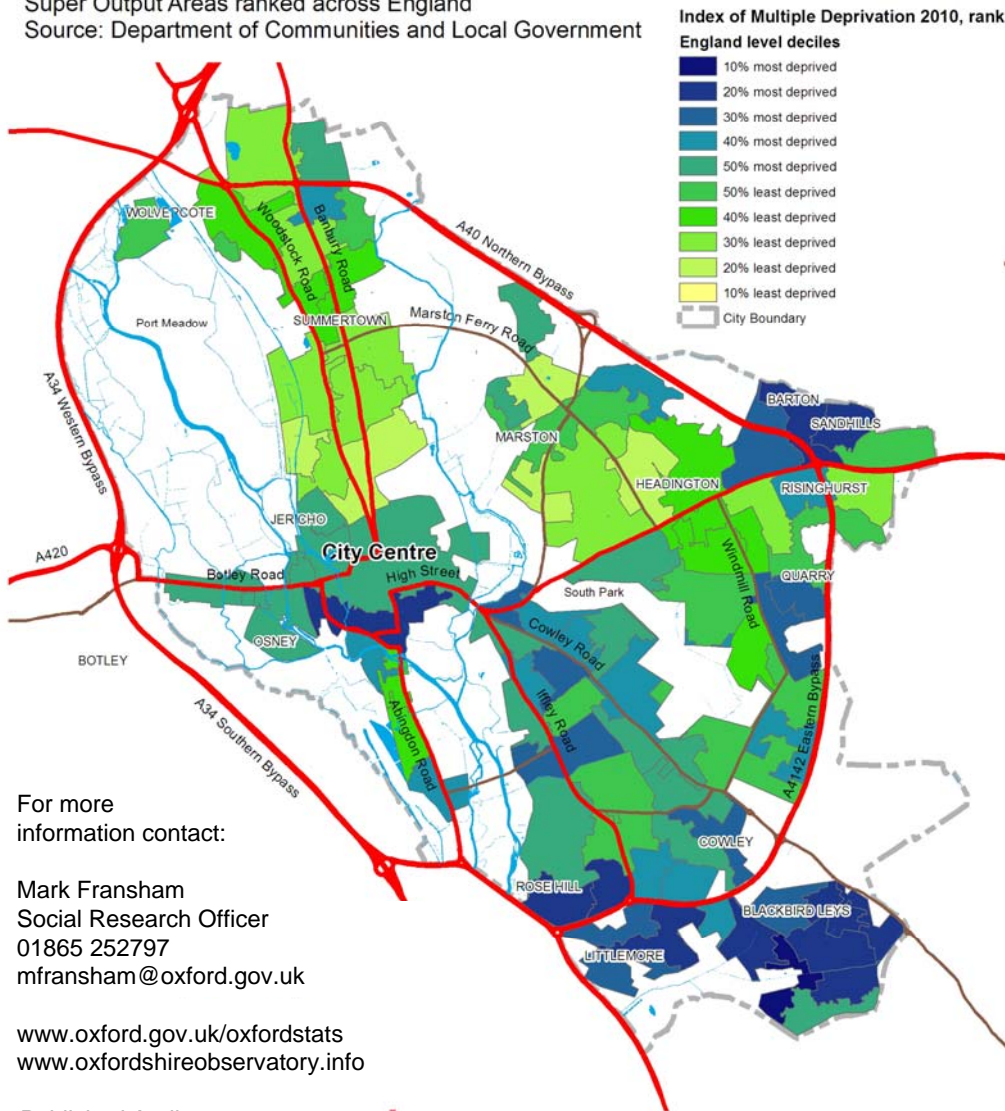


The Indices of Deprivation 2010

Index of Multiple Deprivation 2010, rank

Super Output Areas ranked across England

Source: Department of Communities and Local Government



The 2010 Indices of Deprivation were published last month, updating the previous 2007 and 2004 versions. Despite being named 2010, the data used calculates the relative level of multiple deprivation in 2008.

Using data from 2008, 12 of Oxford's 85 SOAs¹ were calculated to be among the 20% most deprived areas in England (compared to 10 SOAs in the 2007 version), with one in Northfield Brook ward being among the 10% most deprived. On the overall local authority ranks, the city has gone from 155th most deprived to 131st most deprived (i.e. relatively more deprived).

Comparing the ranking of areas from one version of the Indices to the next is difficult because they measure deprivation relative to all other areas in England, but analysis to understand these changes is under way.

In the meantime, Jill McEachern, Research Officer for Oxford Safer Communities Partnership, has produced a detailed report available at <http://tinyurl.com/ID10report> and you can view the data interactively on the new Oxfordshire Data Observatory website at <http://tinyurl.com/ID10data>.

¹ SOAs or Super Output Areas are small geographical areas used for producing small area statistics. Each one contains a population of around 1,500.

www.oxford.gov.uk



For more information contact:

Mark Fransham
Social Research Officer
01865 252797
mfransham@oxford.gov.uk

www.oxford.gov.uk/oxfordstats
www.oxfordshireobservatory.info

Published April 2010